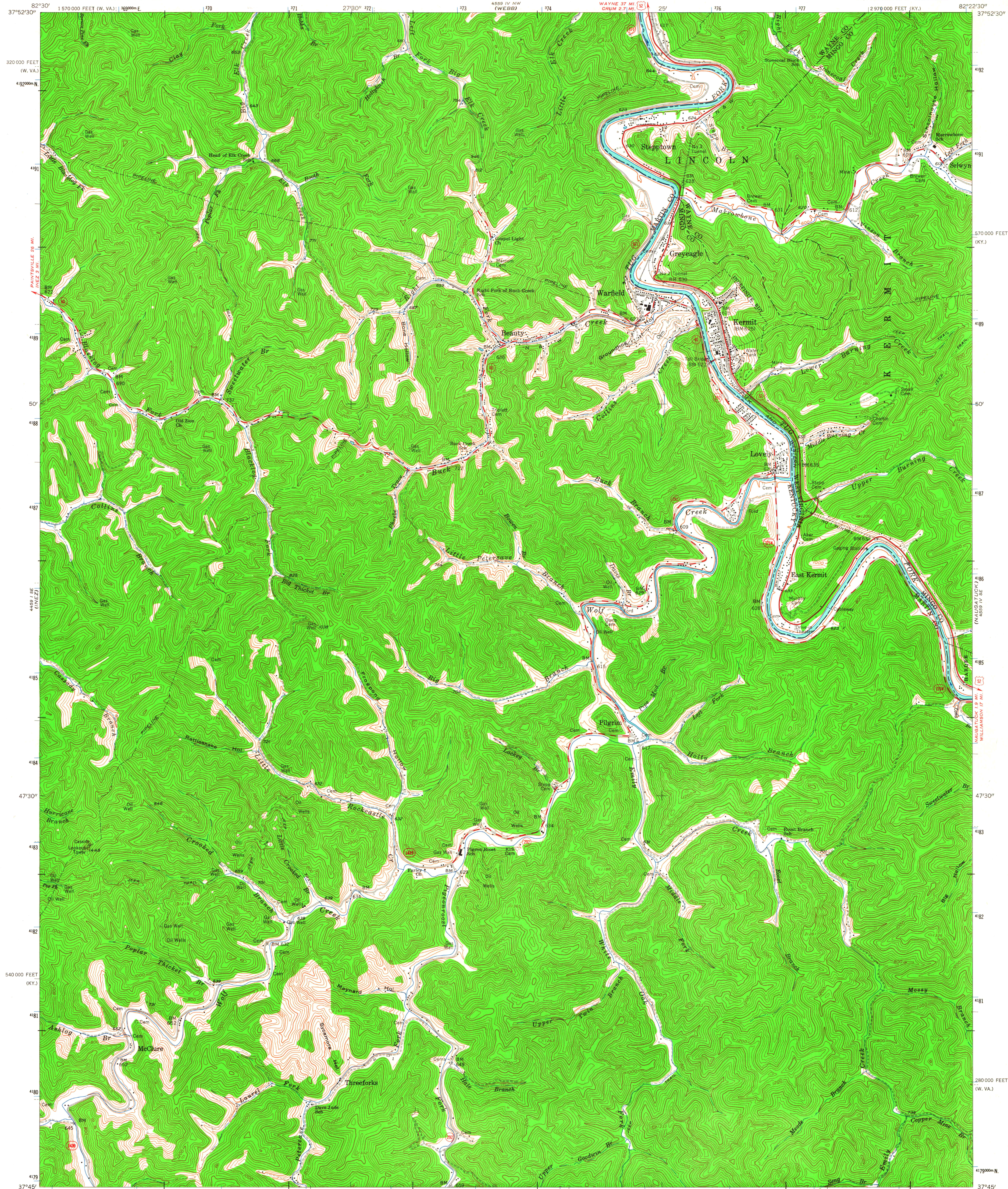


82°30' 37°52'30"

UNITED STATES
DEPARTMENT OF THE INTERIOR
GEOLOGICAL SURVEY

KERMIT QUADRANGLE
KENTUCKY—WEST VIRGINIA
7.5 MINUTE SERIES (TOPOGRAPHIC)
SW/4 NAUGATUCK 15' QUADRANGLE

82°22'30" 37°52'30"



Mapped, edited, and published by the Geological Survey in cooperation with Kentucky Geological Survey and State of West Virginia agencies
Control by USGS, USC&GS, and USCE
Topography in Kentucky by photogrammetric methods from aerial photographs taken 1951. Field checked 1954. Revised 1963
Topography in West Virginia by photogrammetric methods from aerial photographs taken 1958. Field checked 1963
Polyconic projection. 1927 North American datum
10,000-foot grids based on Kentucky coordinate system, south zone and West Virginia coordinate system, south zone.
1000-meter Universal Transverse Mercator grid ticks, zone 17, shown in blue

UTM GRID AND 1963 MAGNETIC NORTH DECLINATION AT CENTER OF SHEET

SCALE 1:24,000
CONTOUR INTERVAL 40 FEET
DATUM IS MEAN SEA LEVEL

THIS MAP COMPLIES WITH NATIONAL MAP ACCURACY STANDARDS FOR SALE BY U. S. GEOLOGICAL SURVEY, WASHINGTON 25, D. C., AND KENTUCKY DEPARTMENT OF COMMERCE, FRANKFORT, KENTUCKY
A FOLDER DESCRIBING TOPOGRAPHIC MAPS AND SYMBOLS IS AVAILABLE ON REQUEST

ROAD CLASSIFICATION
Heavy-duty ——— Light-duty ———
Medium-duty ——— Unimproved dirt ———
U. S. Route ——— State Route ———

KENTUCKY
QUADRANGLE LOCATION

KERMIT, KY—W. VA.
SW/4 NAUGATUCK 15' QUADRANGLE
N3745—W8222.5/7.5
1963
AMS 4559 IV SW—SERIES V853