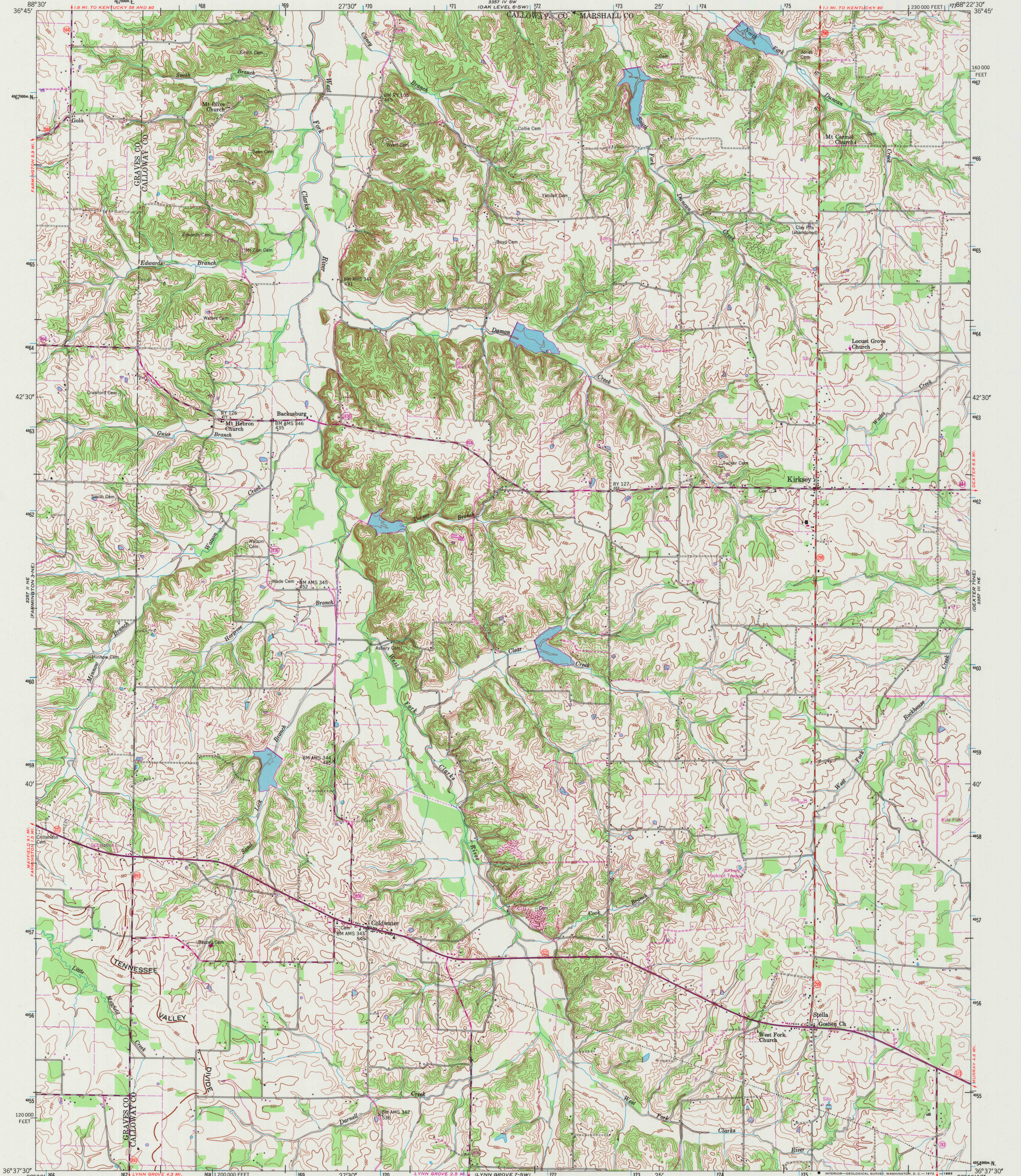


UNITED STATES  
DEPARTMENT OF THE INTERIOR  
GEOLOGICAL SURVEY

UNITED STATES  
TENNESSEE VALLEY AUTHORITY  
MAPS AND SURVEYS BRANCH

KIRKSEY QUADRANGLE  
KENTUCKY  
7.5 MINUTE SERIES (TOPOGRAPHIC) 7-NW



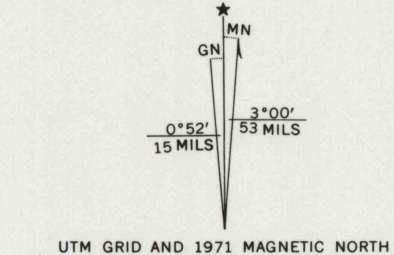
Maped and edited by Tennessee Valley Authority  
Published by the Geological Survey  
Control by USC&GS, USGS, and TVA

Topography by USGS and TVA by photogrammetric  
methods using aerial photographs taken 1948 and 1949.  
Map field checked by TVA, 1951

Polyconic projection, 1927 North American datum  
10,000 foot grid based on Kentucky (South)  
rectangular coordinate system  
1000 meter Universal Transverse Mercator Grid ticks,  
Zone 16, shown in blue

Revisions shown in purple and recompilation of woodland  
areas compiled by the Tennessee Valley Authority from aerial  
photographs taken 1971. This information not field checked

Fine purple dashed lines indicate selected fence and field lines  
visible on aerial photography. This information is unchecked

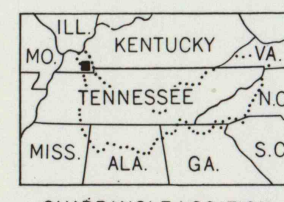


SCALE 1:24,000  
1 1000 0 1000 2000 3000 4000 5000 6000 7000 FEET  
1 5 10 15 20 25 30 35 40 45 50 KILOMETER

CONTOUR INTERVAL 10 FEET  
DASHED LINES REPRESENT HALF-INTERVAL CONTOURS  
DATUM IS MEAN SEA LEVEL

THIS MAP COMPLIES WITH NATIONAL MAP ACCURACY STANDARDS

FOR SALE BY U.S. GEOLOGICAL SURVEY, WASHINGTON, D.C. 20242,  
KENTUCKY GEOLOGICAL SURVEY, LEXINGTON, KENTUCKY 40506  
KENTUCKY DEPARTMENT OF COMMERCE, FRANKFORT, KENTUCKY 40601  
U.S. TENNESSEE VALLEY AUTHORITY, CHATTANOOGA, TENN. 37401 OR KNOXVILLE, TENN. 37902  
A FOLDER DESCRIBING TOPOGRAPHIC MAPS AND SYMBOLS IS AVAILABLE ON REQUEST



QUADRANGLE LOCATION

ROAD CLASSIFICATION  
Heavy-duty ..... Poor motor road .....  
Medium-duty ..... Wagon and jeep track .....  
Light-duty ..... Foot trail .....  
U. S. Route ..... State Route .....

KIRKSEY, KY.  
N3637.5-W8822.5/7.5  
PHOTOINSPECTED 1981  
1951

PHOTOREVISED 1971  
AMS 3357 III NW-SERIES V853

JUL 1984