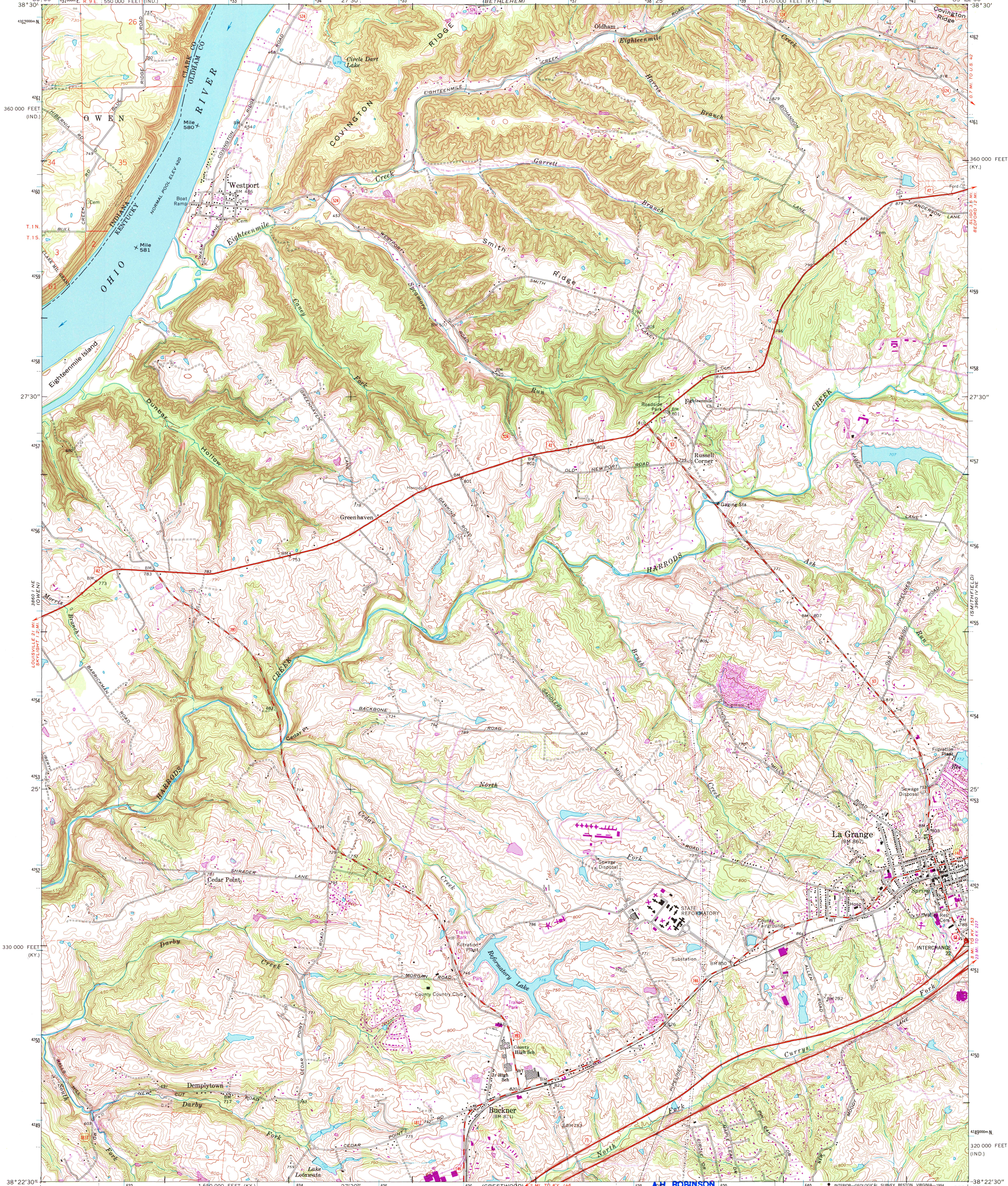


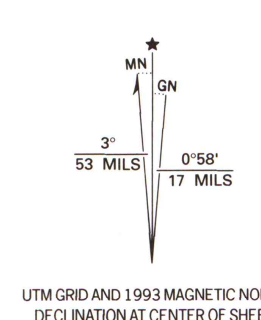
UNITED STATES
DEPARTMENT OF THE INTERIOR
GEOLOGICAL SURVEY

STATE OF KENTUCKY
KENTUCKY GEOLOGICAL SURVEY
UNIVERSITY OF KENTUCKY

LA GRANGE QUADRANGLE
KENTUCKY-INDIANA
7.5 MINUTE SERIES (TOPOGRAPHIC)



Produced by the United States Geological Survey
in cooperation with Indiana Department of Natural Resources
Control by USGS and NGS/NOAA
Topography in Kentucky by photogrammetric methods from aerial
photographs taken 1952. Field checked 1954. Topography in Indiana
by planimetric surveys 1937. Revised from aerial photographs
taken 1969. Field checked 1969
Projection: Kentucky coordinate system, north zone
(Lambert conformal conic)
10,000-foot grid ticks: Kentucky coordinate system,
north zone and Indiana coordinate system, east zone
1000-meter Universal Transverse Mercator grid ticks, zone 16, shown in blue
1927 North American Datum (NAD 27)
North American Datum of 1983 (NAD 83) is shown by dashed corner ticks
The values of the shift between NAD 27 and NAD 83 for 7.5-minute
intersections are given in USGS Bulletin 1575
Fine red dashed lines indicate selected fence and field lines where
generally visible on aerial photographs. This information is unchecked



COMPLIES WITH U.S. GEOLOGICAL SURVEY STANDARDS FOR SPATIAL ACCURACY - CLASS 2
FOR SALE BY U.S. GEOLOGICAL SURVEY, DENVER, COLORADO 80225, OR RESTON, VIRGINIA 22092
KENTUCKY GEOLOGICAL SURVEY, LEXINGTON, KENTUCKY 40506
KENTUCKY DEPARTMENT OF COMMERCE, FRANKFORT, KENTUCKY 40601
AND INDIANA DEPARTMENT OF NATURAL RESOURCES, INDIANAPOLIS, INDIANA 46204
A FOLDER DESCRIBING TOPOGRAPHIC MAPS AND SYMBOLS IS AVAILABLE ON REQUEST

A.H. ROBINSON
MAP LIBRARY
AUG 04 1994
U.S. Regional
Depository Copy
DO NOT DISCARD
University of Wisconsin
Madison

ROAD CLASSIFICATION
Primary highway, all weather, hard surface
Secondary highway, all weather, hard surface
Light-duty road, all weather, improved surface
Unimproved road, fair or dry weather
Interstate Route
U.S. Route
State Route

LA GRANGE, KY.-IND.
NW/4 LA GRANGE 15' QUADRANGLE
38085-D4-TF-024
1969
REVISED 1993
DMA 3960 IV NW-SERIES V853