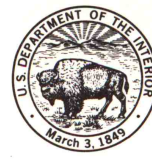
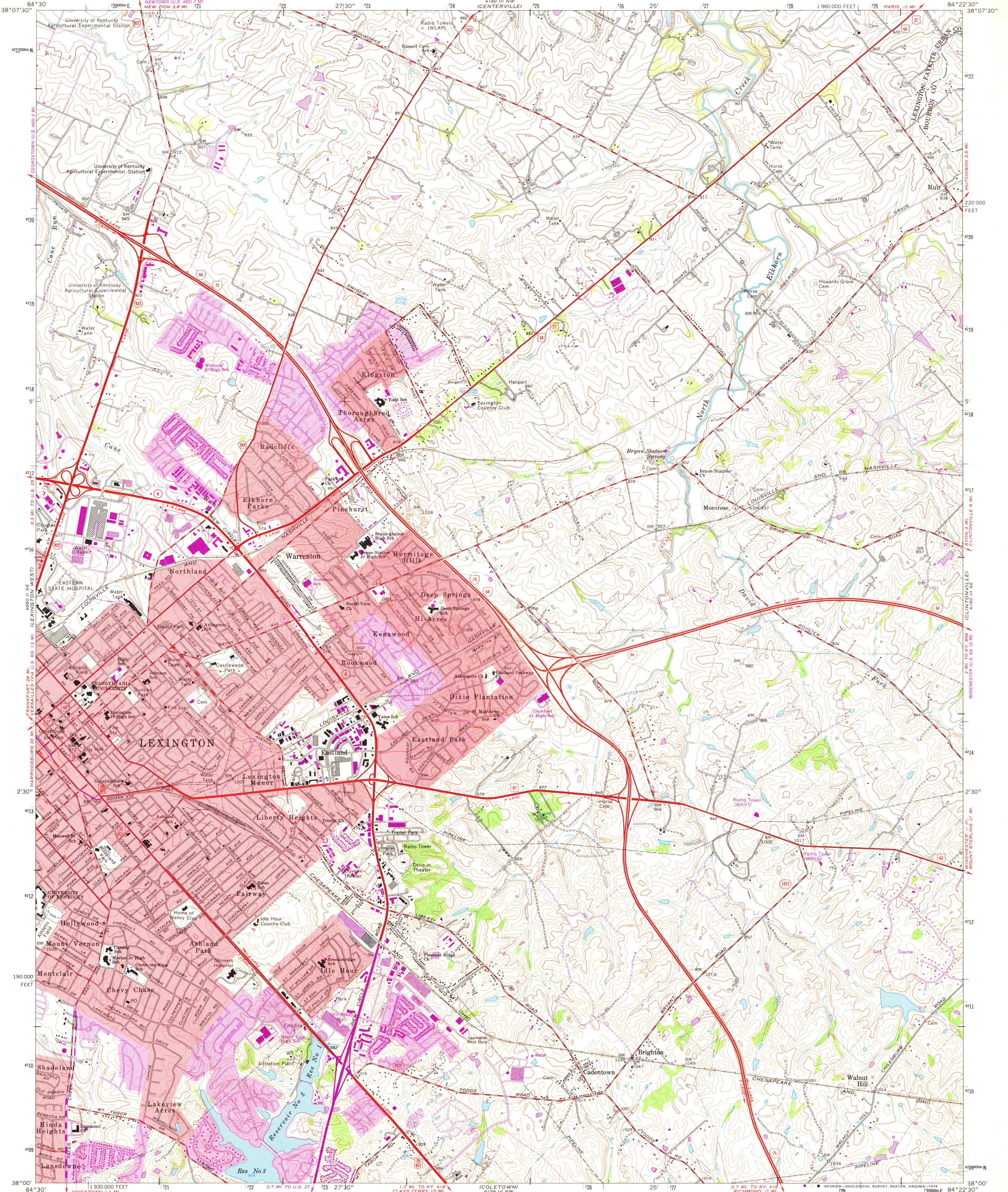


UNITED STATES
DEPARTMENT OF THE INTERIOR
GEOLOGICAL SURVEY



STATE OF KENTUCKY
KENTUCKY GEOLOGICAL SURVEY
UNIVERSITY OF KENTUCKY

LEXINGTON EAST QUADRANGLE
KENTUCKY
7.5 MINUTE SERIES (TOPOGRAPHIC)



Mapped, edited, and published by the Geological Survey
Control by USGS, USC&GS, and Kentucky Geodetic Survey
Topography by photogrammetric methods from aerial photographs
taken 1949. Field checked 1950. Revised 1965
Polyconic projection, 1927 North American datum
10,000-foot grid based on Kentucky coordinate system, north zone
1000-meter Universal Transverse Mercator grid ticks,
zone 16, shown in blue
Fine red dashed lines indicate selected fence and field lines where
generally visible on aerial photographs. This information is unchecked
Red tint indicates areas in which only landmark buildings are shown
Purple tint indicates extension of urban areas

Revisions shown in purple compiled from aerial
photographs taken 1976 and other source data.
Contours adjusted adjacent to certain photo-
revised hydrographic features. This information
not field checked. Map edited 1978

SCALE 1:24,000
1000 0 1000 2000 3000 4000 5000 6000 7000 FEET
1 KILOMETER
CONTOUR INTERVAL 10 FEET
NATIONAL GEODETIC VERTICAL DATUM OF 1929

THIS MAP COMPLIES WITH NATIONAL MAP ACCURACY STANDARDS
FOR SALE BY U.S. GEOLOGICAL SURVEY, RESTON, VIRGINIA 22092
KENTUCKY GEOLOGICAL SURVEY, LEXINGTON, KENTUCKY 40506,
AND KENTUCKY DEPARTMENT OF COMMERCE, FRANKFORT, KENTUCKY 40601
A FOLDER DESCRIBING TOPOGRAPHIC MAPS AND SYMBOLS IS AVAILABLE ON REQUEST

ROAD CLASSIFICATION
Heavy-duty Light-duty
Medium-duty Unimproved dirt
Interstate Route U.S. Route State Route



LEXINGTON EAST, KY.

N 3800—W 8422.5/7.5

1965
PHOTO-REVISED 1978
AMS 4160 III SW—SERIES V853

MAP AND AIR PHOTO LIBRARY
University of Wisconsin, Madison