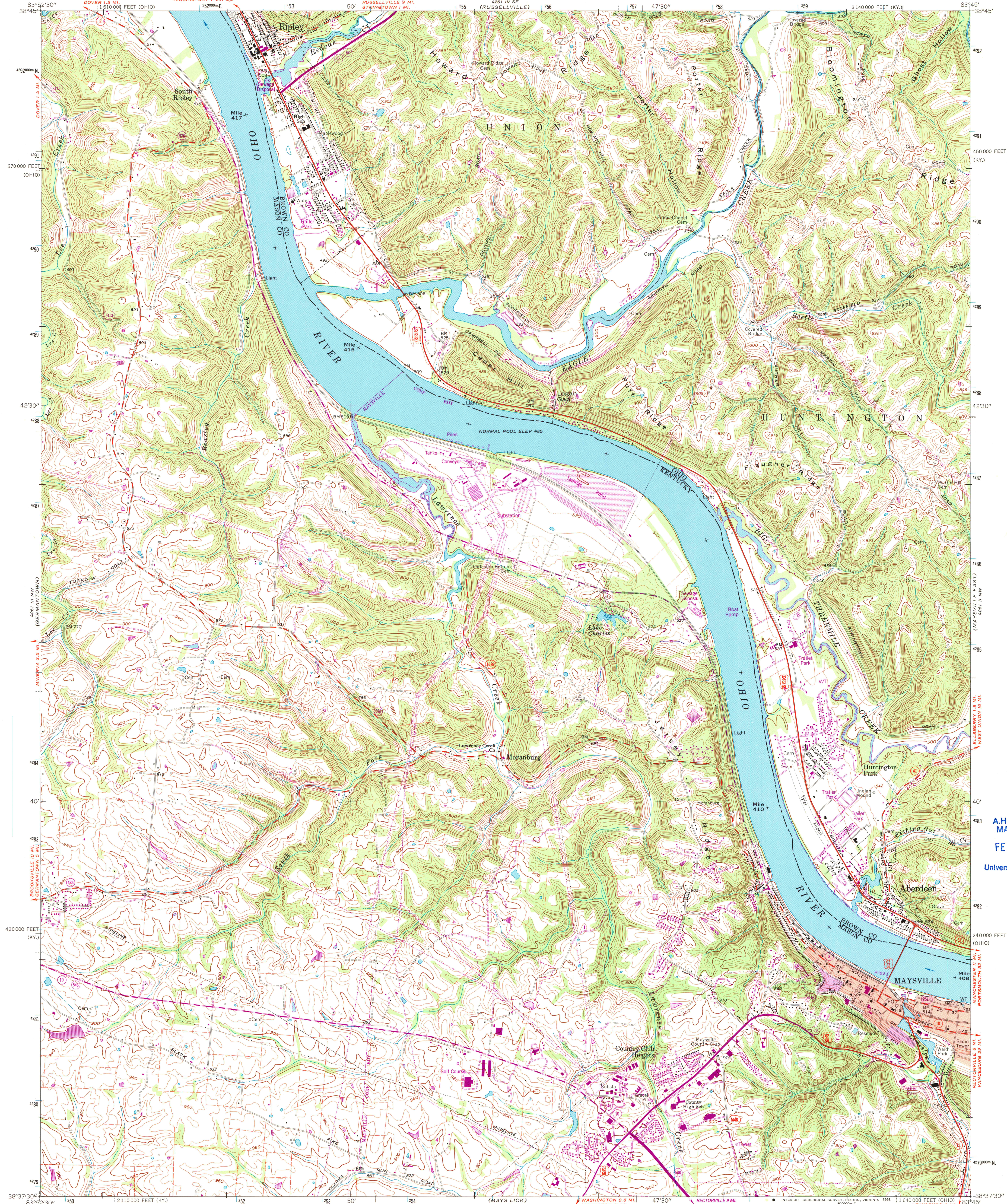


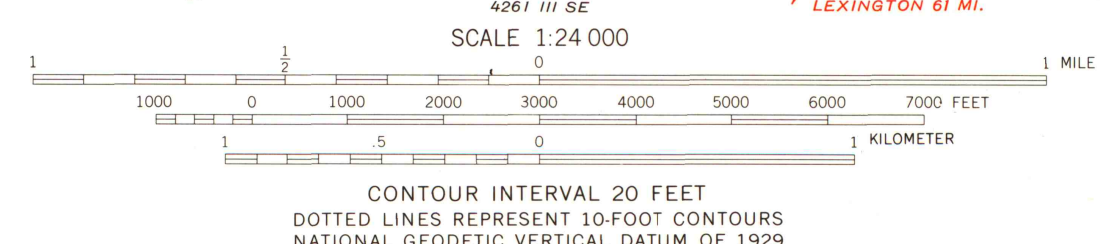
UNITED STATES
DEPARTMENT OF THE INTERIOR
GEOLOGICAL SURVEY

MAYSVILLE WEST QUADRANGLE
KENTUCKY-OHIO
7.5 MINUTE SERIES (TOPOGRAPHIC)
NE/4 MAYSVILLE 15' QUADRANGLE
2140 000 FEET (KY.)



A.H. ROBINSON
MAP LIBRARY
FEB 08 1994
University of Wisconsin
Madison

Produced by the United States Geological Survey
in cooperation with State of Kentucky Geological Survey
and State of Ohio agencies
Control by USGS, NOS/NOAA and USCE
Topography in Kentucky by photogrammetric methods from aerial
photographs taken 1950. Field checked 1952. Revised 1961
Topography in Ohio by photogrammetric methods from aerial
photographs taken 1960. Field checked 1961
Projection: Kentucky coordinate system, north zone
(Lambert conformal conic)
10,000-foot grid ticks: Kentucky coordinate system, north zone
and Ohio coordinate system, south zone
1000-meter Universal Transverse Mercator grid ticks, zone 17, shown in blue
1927 North American Datum (NAD 27)
North American Datum of 1983 (NAD 83) is shown by dashed corner ticks
The values of the shift between NAD 27 and NAD 83 for 7.5-minute
intersections are given in USGS Bulletin 1875
The state boundary as shown represents the approximate position of the
low waterline as determined from U.S. Corps of Engineers Ohio
River charts, surveyed 1913 and supplementary information
Red tint indicates area in which only landmark buildings are shown



THIS MAP COMPLIES WITH NATIONAL MAP ACCURACY STANDARDS
FOR SALE BY U.S. GEOLOGICAL SURVEY, DENVER, COLORADO 80225 OR RESTON, VIRGINIA 22092,
KENTUCKY GEOLOGICAL SURVEY, LEXINGTON, KENTUCKY 40506,
AND KENTUCKY DEPARTMENT OF COMMERCE, FRANKFORT, KENTUCKY 40601
A FOLDER DESCRIBING TOPOGRAPHIC MAPS AND SYMBOLS IS AVAILABLE ON REQUEST

U.S. Regional
Depository Copy
DO NOT DISCARD



ROAD CLASSIFICATION
Primary highway, hard surface
Secondary highway, hard surface
Interstate Route
Light-duty road, hard or improved surface
Unimproved road
U.S. Route
State Route

MAYSVILLE WEST, KY.-OHIO
NE/4 MAYSVILLE 15' QUADRANGLE
38083-F7-TF-024

1961
REVISED 1993
DMA 4261 III NE-SERIES V853

Revisions shown in purple and woodland compiled in
cooperation with State of Kentucky agencies from
aerial photographs taken 1988-90 and other sources
Contours not revised. This information not field checked
Map dated 1993
Purple tint indicates extension of urban areas