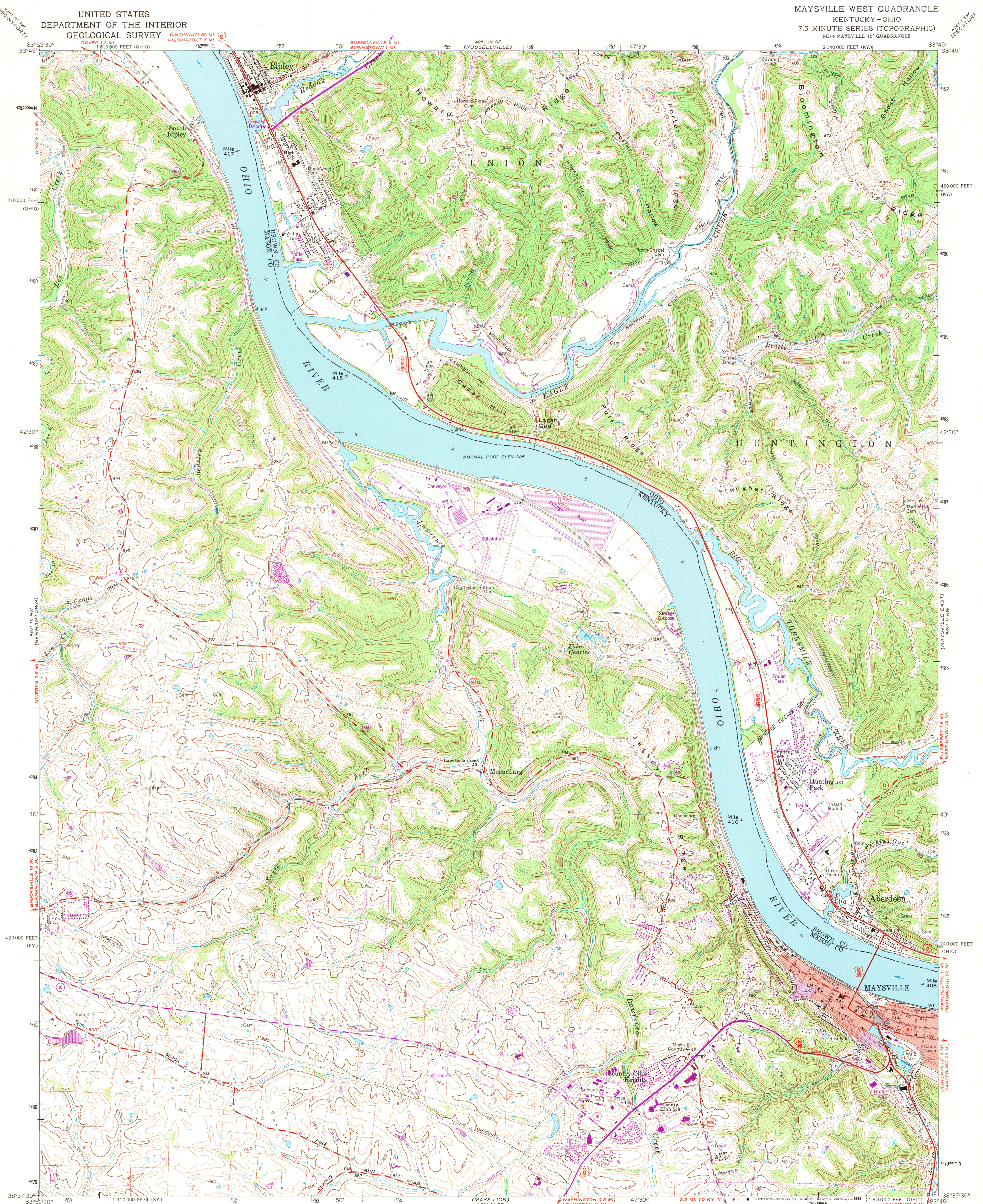


UNITED STATES  
DEPARTMENT OF THE INTERIOR  
GEOLOGICAL SURVEY

MAYSVILLE WEST QUADRANGLE  
KENTUCKY-OHIO  
7.5 MINUTE SERIES (TOPOGRAPHIC)  
NE/4 MAYSVILLE 15' QUADRANGLE



Mapped, edited, and published by the Geological Survey in cooperation with State of Kentucky Geological Survey and State of Ohio agencies

Control by USGS, USC&GS, and USCE

Topography in Kentucky by photogrammetric methods from aerial photographs taken 1950. Field checked 1952. Revised 1961. Topography in Ohio by photogrammetric methods from aerial photographs taken 1960. Field checked 1961.

Polyconic projection. 1927 North American datum. 10,000-foot grids based on Kentucky coordinate system, north zone, and Ohio coordinate system, south zone. 1000-meter Universal Transverse Mercator grid ticks, zone 17, shown in blue. Fine red dashed lines indicate selected fence and field lines where generally visible on aerial photographs. This information is uncorrected. The state boundary as shown represents the approximate position of the low waterline as determined from U. S. Corps of Engineers Ohio River charts, surveyed 1913, and supplementary information. Red tint indicates area in which only landmark buildings are shown.

SCALE 1:24,000  
1 000 0 1000 2000 3000 4000 5000 6000 7000 FEET  
1 0 1 KILOMETER

CONTOUR INTERVAL 20 FEET  
DOTTED LINES REPRESENT 10-FOOT CONTOURS  
NATIONAL GEODETIC VERTICAL DATUM OF 1929

THIS MAP COMPLIES WITH NATIONAL MAP ACCURACY STANDARDS  
FOR SALE BY U. S. GEOLOGICAL SURVEY, DENVER, COLORADO 80225 OR RESTON, VIRGINIA 22092,  
AND KENTUCKY GEOLOGICAL SURVEY, LEXINGTON, KENTUCKY 40506,  
AND KENTUCKY DEPARTMENT OF COMMERCE, FRANKFORT, KENTUCKY 40601  
A FOLDER DESCRIBING TOPOGRAPHIC MAPS AND SYMBOLS IS AVAILABLE ON REQUEST

Ohio area lies within the Virginia Military District  
To place on the predicted North American Datum 1983  
move the projection lines 4 meters south and  
8 meters west as shown by dashed corner ticks

U.S. Regional  
Depository Copy  
DO NOT DISCARD



ROAD CLASSIFICATION  
Heavy-duty ——— Light-duty ———  
Medium-duty ——— Unimproved dirt ———  
U. S. Route ——— State Route ———

MAYSVILLE WEST, KY.-OHIO  
NE/4 MAYSVILLE 15' QUADRANGLE  
38083-F7-TF-024

1961  
PHOTOREVISED 1987  
ARTHUR H. ROBINSON MAP LIBRARY  
University of Wisconsin-Madison  
APR 6 5 1989