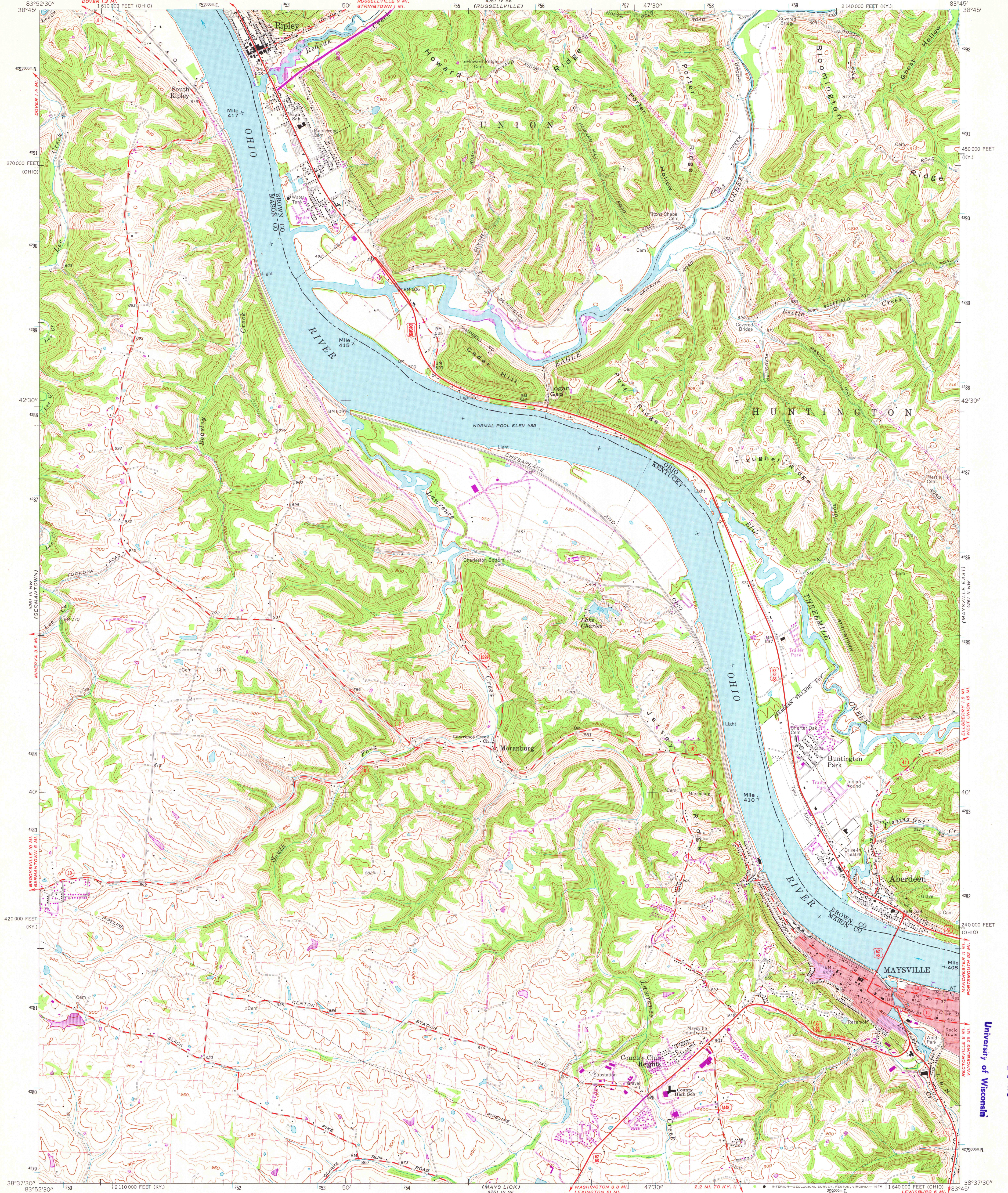
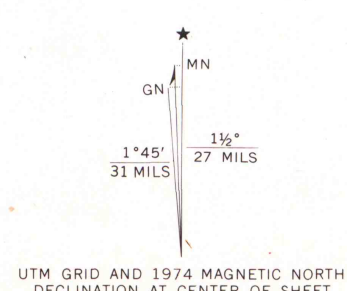


UNITED STATES
DEPARTMENT OF THE INTERIOR
GEOLOGICAL SURVEY

MAYSVILLE WEST QUADRANGLE
KENTUCKY-OHIO
7.5 MINUTE SERIES (TOPOGRAPHIC)
NE 1/4 MAYSVILLE 15' QUADRANGLE
2 140 000 FEET (KY.)



Mapped, edited, and published by the Geological Survey in cooperation with State of Kentucky Geological Survey and State of Ohio agencies
Control by USGS, USC&GS, and USCE
Topography in Kentucky by photogrammetric methods from aerial photographs taken 1950. Field checked 1952. Revised 1961
Topography in Ohio by photogrammetric methods from aerial photographs taken 1950. Field checked 1961
Polyconic projection. 1927 North American datum. 10,000-foot grids based on Kentucky coordinate system, north zone, and Ohio coordinate system, south zone. 1000-metre Universal Transverse Mercator grid ticks, zone 17, shown in blue
Fine red dashed lines indicate selected fence and field lines where generally visible on aerial photographs. This information is unchecked
The state boundary as shown represents the approximate position of the low water line as determined from U. S. Corps of Engineers Ohio River charts, surveyed 1913, and supplementary information
Red tint indicates area in which only landmark buildings are shown
Ohio area lies within the Virginia Military District



SCALE 1:24 000
CONTOUR INTERVAL 20 FEET
DOTTED LINES REPRESENT 10-FOOT CONTOURS
NATIONAL GEODETIC VERTICAL DATUM OF 1929

THIS MAP COMPLIES WITH NATIONAL MAP ACCURACY STANDARDS FOR SALE BY U. S. GEOLOGICAL SURVEY, RESTON, VIRGINIA 22092
KENTUCKY GEOLOGICAL SURVEY, LEXINGTON, KENTUCKY 40506,
AND KENTUCKY DEPARTMENT OF COMMERCE, FRANKFORT, KENTUCKY 40601
A FOLDER DESCRIBING TOPOGRAPHIC MAPS AND SYMBOLS IS AVAILABLE ON REQUEST



ROAD CLASSIFICATION
Heavy-duty ——— Light-duty ———
Medium-duty ——— Unimproved dirt ———
U.S. Route ——— State Route ———

MAYSVILLE WEST, KY.-OHIO
NE 1/4 MAYSVILLE 15' QUADRANGLE
N 3837.5-W 8345/7.5

1961
PHOTOREVISED 1974
AMS 4261 III NE-SERIES V852

Revisions shown in purple compiled in cooperation with
State of Ohio agencies from aerial photographs taken
1974. This information not field checked
Purple tint indicates extension of urban areas

MAP AND AIR PHOTO
APR 24 1976
University of Wisconsin