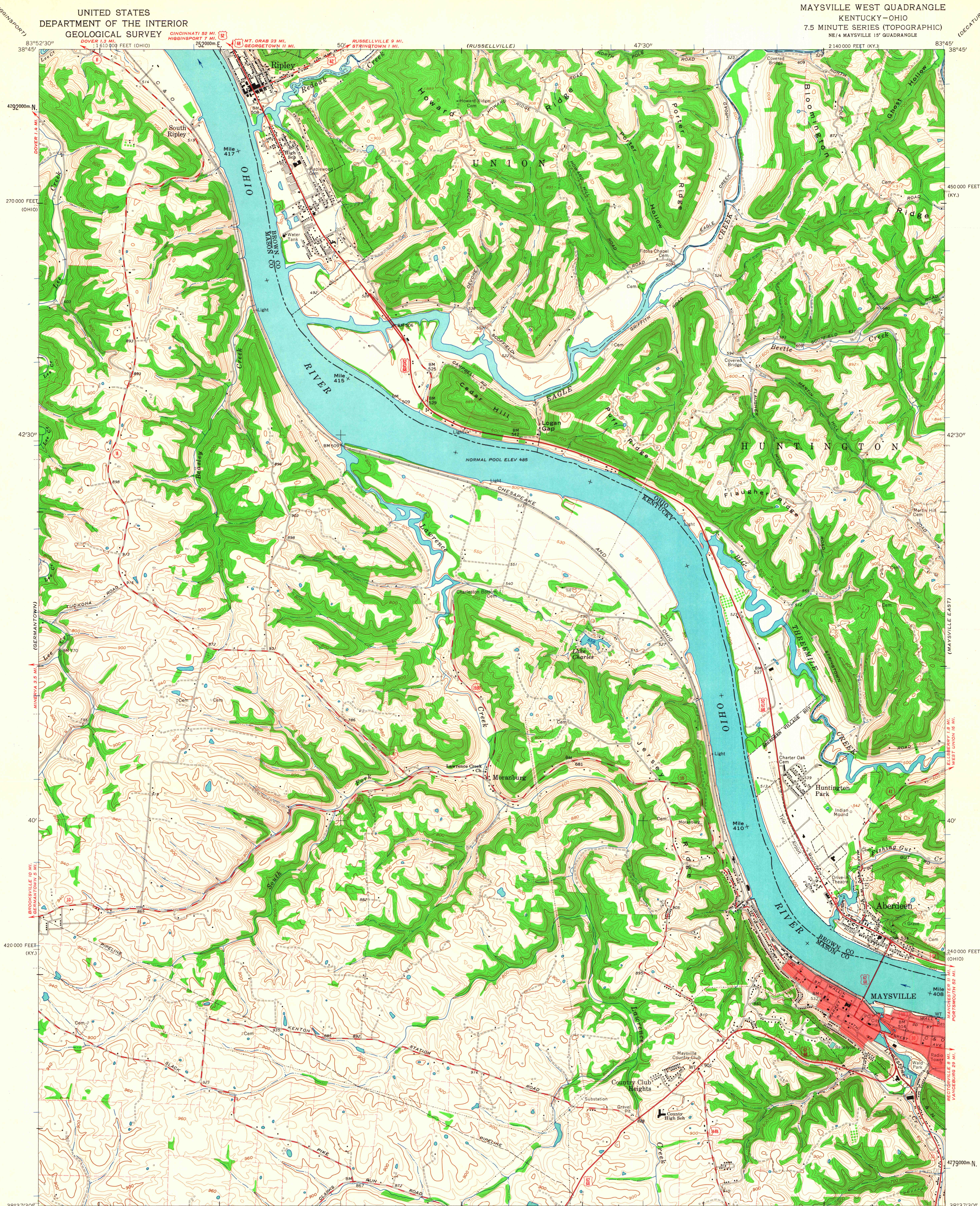


UNITED STATES
DEPARTMENT OF THE INTERIOR
GEOLOGICAL SURVEY

MAYSVILLE WEST QUADRANGLE
KENTUCKY-OHIO
7.5 MINUTE SERIES (TOPOGRAPHIC)
NE 1/4 MAYSVILLE 15' QUADRANGLE



Mapped, edited, and published by the Geological Survey
in cooperation with State of Kentucky Geological Survey
and State of Ohio agencies

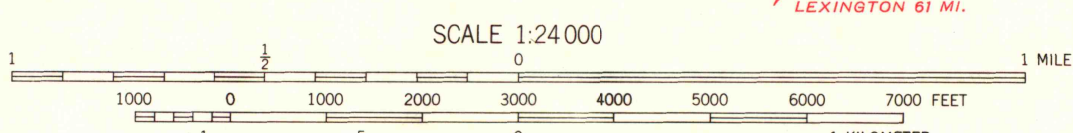
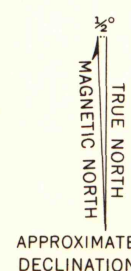
Control by USGS, USC&GS, and USCE

Topography in Kentucky by photogrammetric methods from aerial
photographs taken 1950. Field checked 1952. Revised 1961
Topography in Ohio by photogrammetric methods from aerial
photographs taken 1960. Field checked 1961

Polyconic projection. 1927 North American datum. 10,000-foot grids
based on Kentucky coordinate system, north zone, and Ohio coordinate
system, south zone. 1000-meter Universal Transverse Mercator grid
ticks, zone 17, shown in blue

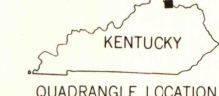
Fine red dashed lines indicate selected fence and field lines where
generally visible on aerial photographs. This information is unchecked
The state boundary as shown represents the approximate position of the
low waterline as determined from U. S. Corps of Engineers Ohio
River charts, surveyed 1913, and supplementary information

Red tint indicates area in which only landmark buildings are shown
Ohio area lies within the Virginia Military District



CONTOUR INTERVAL 20 FEET
DOTTED LINES REPRESENT 10-FOOT CONTOURS
DATUM IS MEAN SEA LEVEL

THIS MAP COMPLIES WITH NATIONAL MAP ACCURACY STANDARDS
FOR SALE BY U. S. GEOLOGICAL SURVEY, WASHINGTON 25, D. C.,
KENTUCKY GEOLOGICAL SURVEY, LEXINGTON, KENTUCKY,
AND KENTUCKY DEPARTMENT OF COMMERCE, FRANKFORT, KENTUCKY
A FOLDER DESCRIBING TOPOGRAPHIC MAPS AND SYMBOLS IS AVAILABLE ON REQUEST



ROAD CLASSIFICATION
Heavy-duty ——— Light-duty ———
Medium-duty ——— Unimproved dirt ———
U. S. Route ——— State Route ———

MAYSVILLE WEST, KY.-OHIO
NE 1/4 MAYSVILLE 15' QUADRANGLE
N 3837.5-W 8345/7.5

1961

MAP AND AIR PHOTO LIBRARY
University of Wisconsin