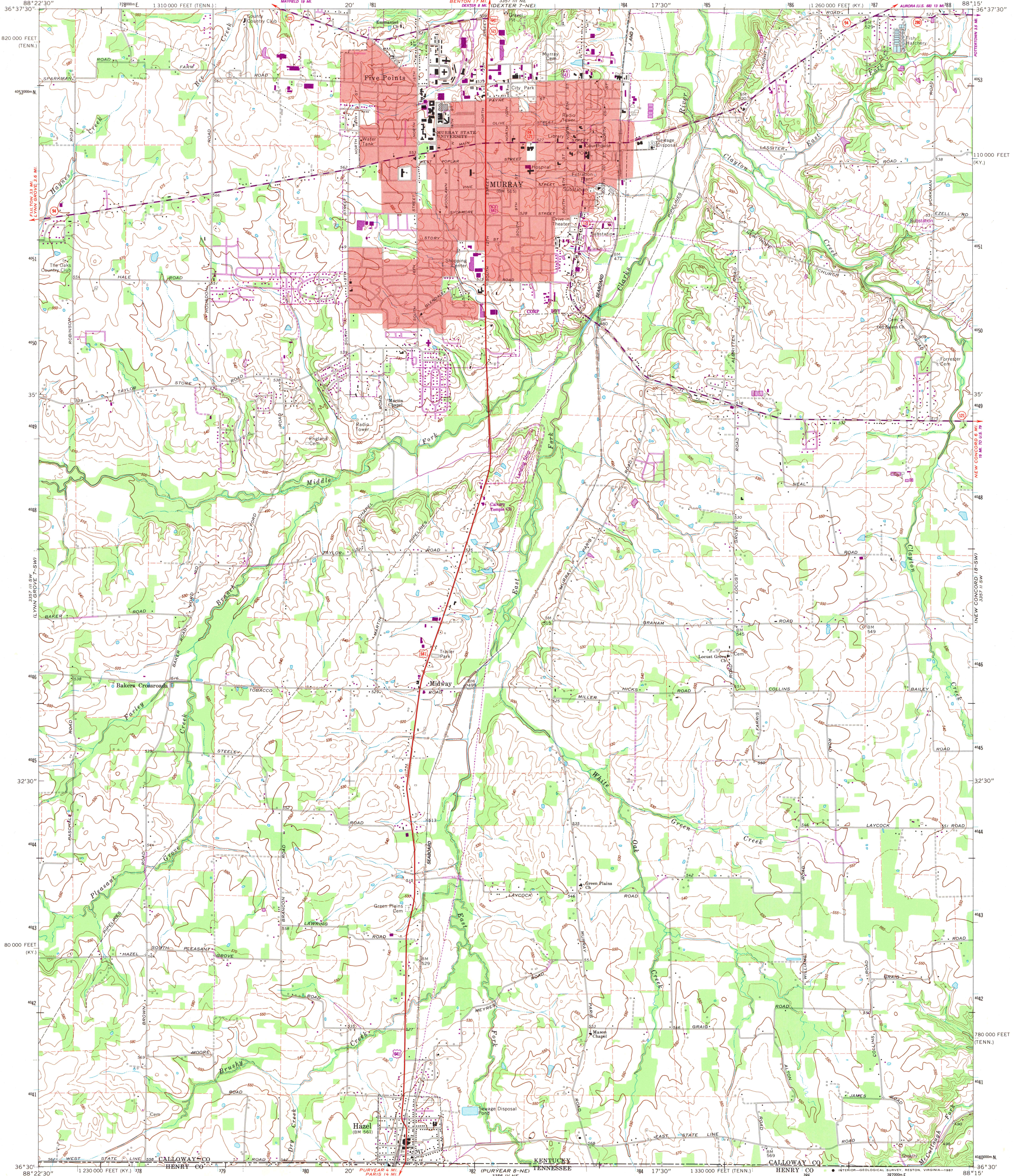


UNITED STATES
DEPARTMENT OF THE INTERIOR
GEOLOGICAL SURVEY

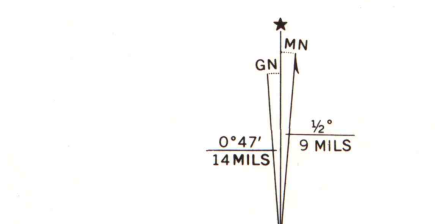
MURRAY QUADRANGLE
KENTUCKY-TENNESSEE
7.5 MINUTE SERIES (TOPOGRAPHIC) 7-SE
824 MURRAY 15' QUADRANGLE



Mapped by the Tennessee Valley Authority
Edited and published by the Geological Survey
Revised by the Geological Survey in cooperation
with Kentucky Geological Survey

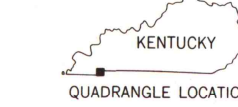
Control by USGS, NOS/NOAA, and TVA
Topography by photogrammetric methods from aerial
photographs taken 1946 and 1948 and plane-table surveys
Field checked 1951. Revised from aerial photographs
taken 1968. Field checked 1969

Polyconic projection. 10,000-foot grid ticks based on
Kentucky coordinate system, south zone, and
Tennessee coordinate system.
1000-meter Universal Transverse Mercator grid ticks,
zone 16, shown in blue. 1927 North American Datum
To place on the predicted North American Datum 1983
move the projection lines 5 meters south and
4 meters east as shown by dashed corner ticks



Red tint indicates area in which only landmark buildings are shown
Fine red dashed lines indicate selected fence and field lines where
generally visible on aerial photographs. This information is unchecked

SCALE 1:24 000
CONTOUR INTERVAL 10 FEET
DASHED LINES REPRESENT HALF INTERVAL CONTOURS
NATIONAL GEODETIC VERTICAL DATUM OF 1929
THIS MAP COMPLETES WITH NATIONAL MAP ACCURACY STANDARDS
FOR SALE BY U.S. GEOLOGICAL SURVEY
DENVER, COLORADO 80225, OR RESTON, VIRGINIA 22092
KENTUCKY GEOLOGICAL SURVEY, LEXINGTON, KENTUCKY 40506
KENTUCKY DEPARTMENT OF COMMERCE, FRANKFORT, KENTUCKY 40601
AND BY U.S. TENNESSEE VALLEY AUTHORITY
CHATTANOOGA, TENN. 37401 OR KNOXVILLE, TENN. 37902
A FOLDER DESCRIBING TOPOGRAPHIC MAPS AND SYMBOLS IS AVAILABLE ON REQUEST



ARTHUR H. ROBINSON MAP LIBRARY, MURRAY, KY. - TENN.
University of Wisconsin-Madison
SE/4 MURRAY 15' QUADRANGLE
36088-E3-TF-024

ROAD CLASSIFICATION (TVA 7-SE)
Primary highway, all weather, hard surface
Secondary highway, all weather, hard surface
Light-duty road, all weather, improved surface
Unimproved road, fair or dry weather
Interstate Route
U. S. Route
State Route

Revisions shown in purple and woodland compiled by
the Tennessee Valley Authority from aerial photographs
taken 1981 and other sources. Contours adjusted
adjacent to certain photorevised hydrographic features.
This information not field checked. Map edited 1986
1969
PHOTOREVISED 1986
DMA 3357 III SE-SERIES V853

U.S. Regional
Depository Copy
DO NOT DISCARD
JUN 10 1987