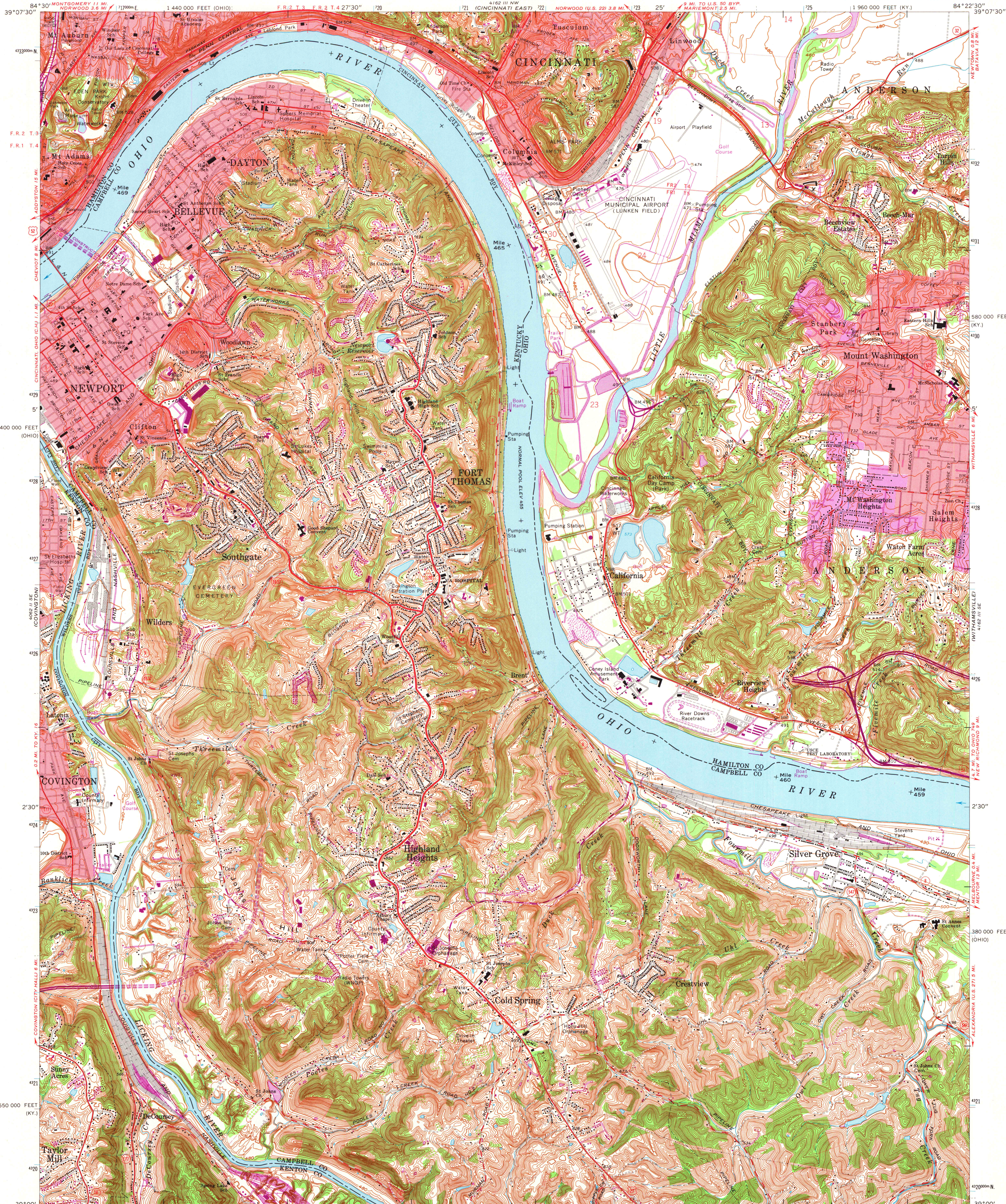


UNITED STATES  
DEPARTMENT OF THE INTERIOR  
GEOLOGICAL SURVEY

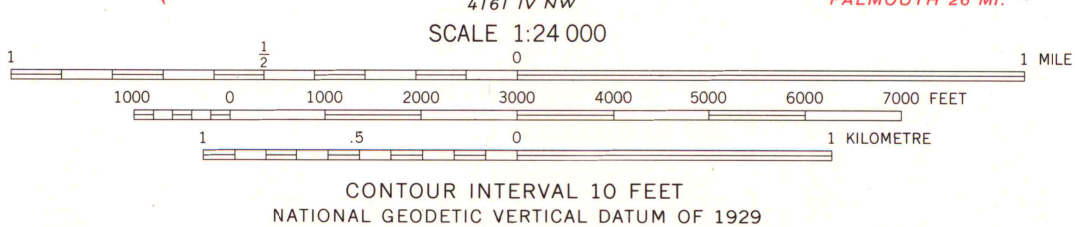
STATE OF KENTUCKY  
KENTUCKY GEOLOGICAL SURVEY  
UNIVERSITY OF KENTUCKY

NEWPORT QUADRANGLE  
KENTUCKY-OHIO  
7.5 MINUTE SERIES (TOPOGRAPHIC)

SW/4 EAST CINCINNATI 15' QUADRANGLE



Mapped, edited, and published by the Geological Survey  
Control by USGS, USCGS, USCE, and City of Cincinnati  
Topography by photogrammetric methods from aerial photographs  
taken 1949, and in part by the City of Cincinnati  
Field checked 1951, 1952, and 1954. Revised 1961  
Polyconic projection. 1927 North American datum  
10,000-foot grids based on Kentucky coordinate system,  
north zone, and Ohio coordinate system, south zone  
1000-metre Universal Transverse Mercator grid ticks, zone 16, shown in blue  
Fine red dashed lines indicate selected fence and field lines where  
generally visible on aerial photographs. This information is shown  
Red tint indicates areas in which only landmark buildings are shown  
The state boundary as shown represents the approximate position  
of the low water line as determined from U.S. Corps of Engineers  
Ohio River charts, surveyed 1913, and supplementary information  
Area east of the Little Miami River lies within the Virginia Military District  
Area west of the Little Miami River lies within the Between the Miamis  
Land lines based on the Great Miami River Base. Dotted land lines  
established by private subdivision of the Symmes Purchase



THIS MAP COMPLIES WITH NATIONAL MAP ACCURACY STANDARDS  
FOR SALE BY U.S. GEOLOGICAL SURVEY, RESTON, VIRGINIA 22092  
KENTUCKY GEOLOGICAL SURVEY, LEXINGTON, KENTUCKY 40506,  
AND KENTUCKY DEPARTMENT OF COMMERCE, FRANKFORT, KENTUCKY 40601  
A FOLDER DESCRIBING TOPOGRAPHIC MAPS AND SYMBOLS IS AVAILABLE ON REQUEST



ROAD CLASSIFICATION  
Heavy-duty ——— Light-duty ———  
Medium-duty ——— Unimproved dirt ———  
U.S. Route ——— State Route ———  
Interstate Route ———  
NEWPORT, KY.-OHIO  
SW/4 EAST CINCINNATI 15' QUADRANGLE  
N3900-W8422.5/7.5

Revisions shown in purple compiled in cooperation with  
State of Ohio agencies from aerial photographs taken  
1970 and 1974. This information is not field checked  
Purple tint indicates extension of urban areas

1961  
PHOTOREVISED 1970 AND 1974  
AMS 4162 III SW-SERIES V852

MAP AND AIR PHOTO  
LIBRARY

MAY 29 1975

University of Wisconsin