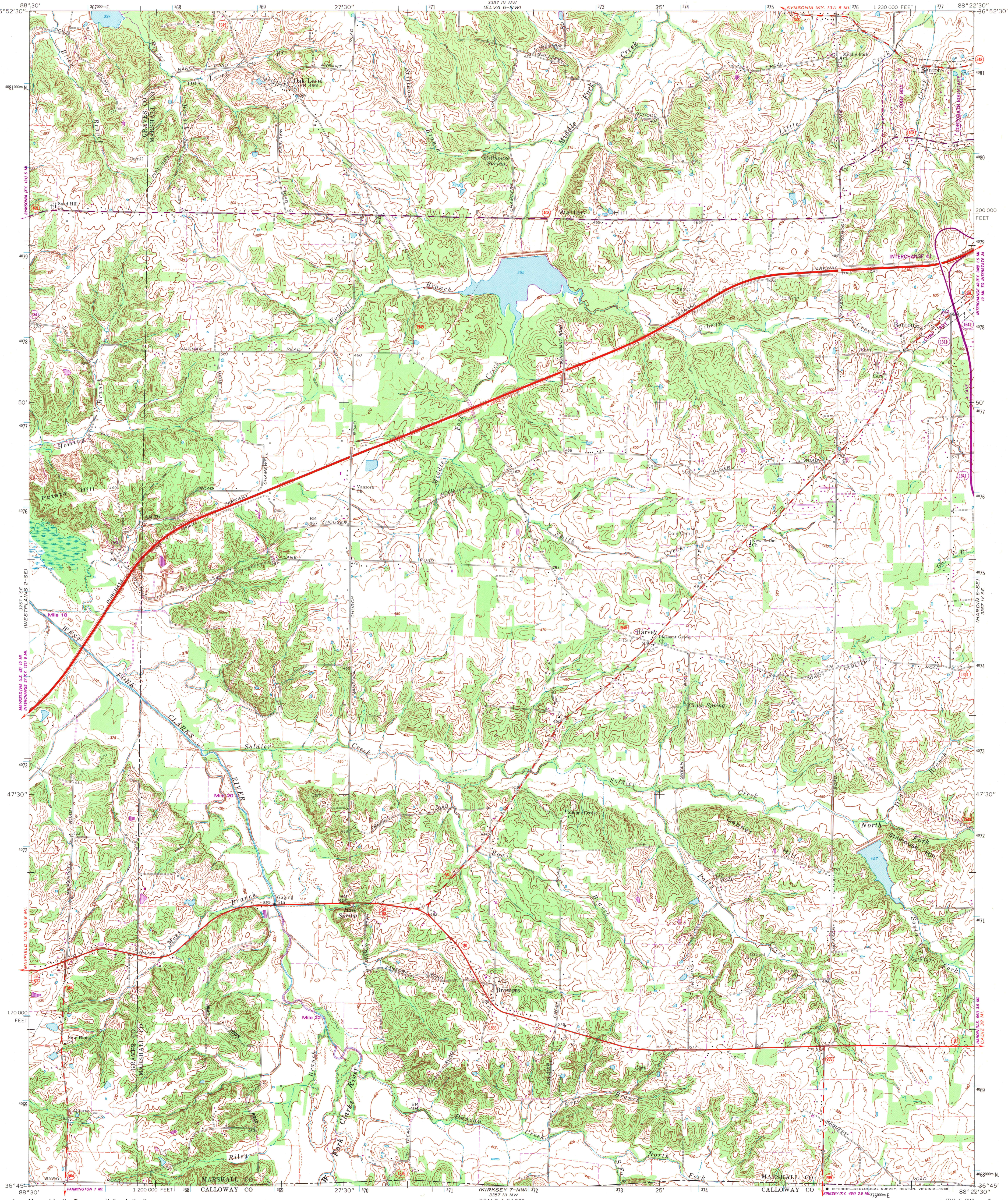
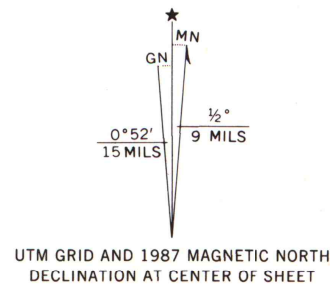


UNITED STATES
DEPARTMENT OF THE INTERIOR
GEOLOGICAL SURVEY

OAK LEVEL QUADRANGLE
KENTUCKY
7.5 MINUTE SERIES (TOPOGRAPHIC) 6-SW
SW/4 BENTON 15' QUADRANGLE

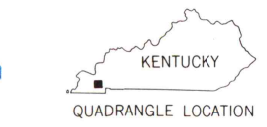


Mapped by the Tennessee Valley Authority
Edited and published by the Geological Survey
Revised by the Geological Survey in cooperation
with Kentucky Geological Survey
Control by USGS, NOS/NOAA, and TVA
Topography by photogrammetric methods from aerial photographs
taken 1948. Field checked 1951. Revised from aerial
photographs taken 1968. Field checked 1969
Polyconic projection, 10,000-foot grid ticks based on
Kentucky coordinate system, south zone
1000-meter Universal Transverse Mercator grid ticks,
zone 16, shown in blue. 1927 North American Datum
To place on the predicted North American Datum 1983
move the projection lines 5 meters south and
4 meters east as shown by dashed corner ticks
Fine red dashed lines indicate selected fence and field lines where
generally visible on aerial photographs. This information is unchecked



SCALE 1:24,000
CONTOUR INTERVAL 10 FEET
DOTTED LINES REPRESENT 5-FOOT CONTOURS
NATIONAL GEODETIC VERTICAL DATUM OF 1929
JUL 21 1983
H. ROBINSON
MAP LIBRARY
University of Wisconsin
Madison

THIS MAP COMPLIES WITH NATIONAL MAP ACCURACY STANDARDS
FOR SALE BY U.S. GEOLOGICAL SURVEY
DENVER, COLORADO 80225, OR RESTON, VIRGINIA 22092
KENTUCKY GEOLOGICAL SURVEY, LEXINGTON, KENTUCKY 40506
KENTUCKY DEPARTMENT OF COMMERCE, FRANKFORT, KENTUCKY 40601
AND U.S. TENNESSEE VALLEY AUTHORITY,
CHATTANOOGA, TENN. 37401 OR KNOXVILLE, TENN. 37902
A FOLDER DESCRIBING TOPOGRAPHIC MAPS AND SYMBOLS IS AVAILABLE ON REQUEST



ROAD CLASSIFICATION
Primary highway, all weather, hard surface
Secondary highway, all weather, hard surface
Light-duty road, all weather, improved surface
Unimproved road, fair or dry weather
Interstate Route
U. S. Route
State Route

OAK LEVEL, KY.
SW/4 BENTON 15' QUADRANGLE
36088-G4-TF-024

1969
PHOTOREVISED 1987
DMA 3357 IV SW-SERIES 9853

U.S. Regional
Depository Copy
DO NOT DISCARD