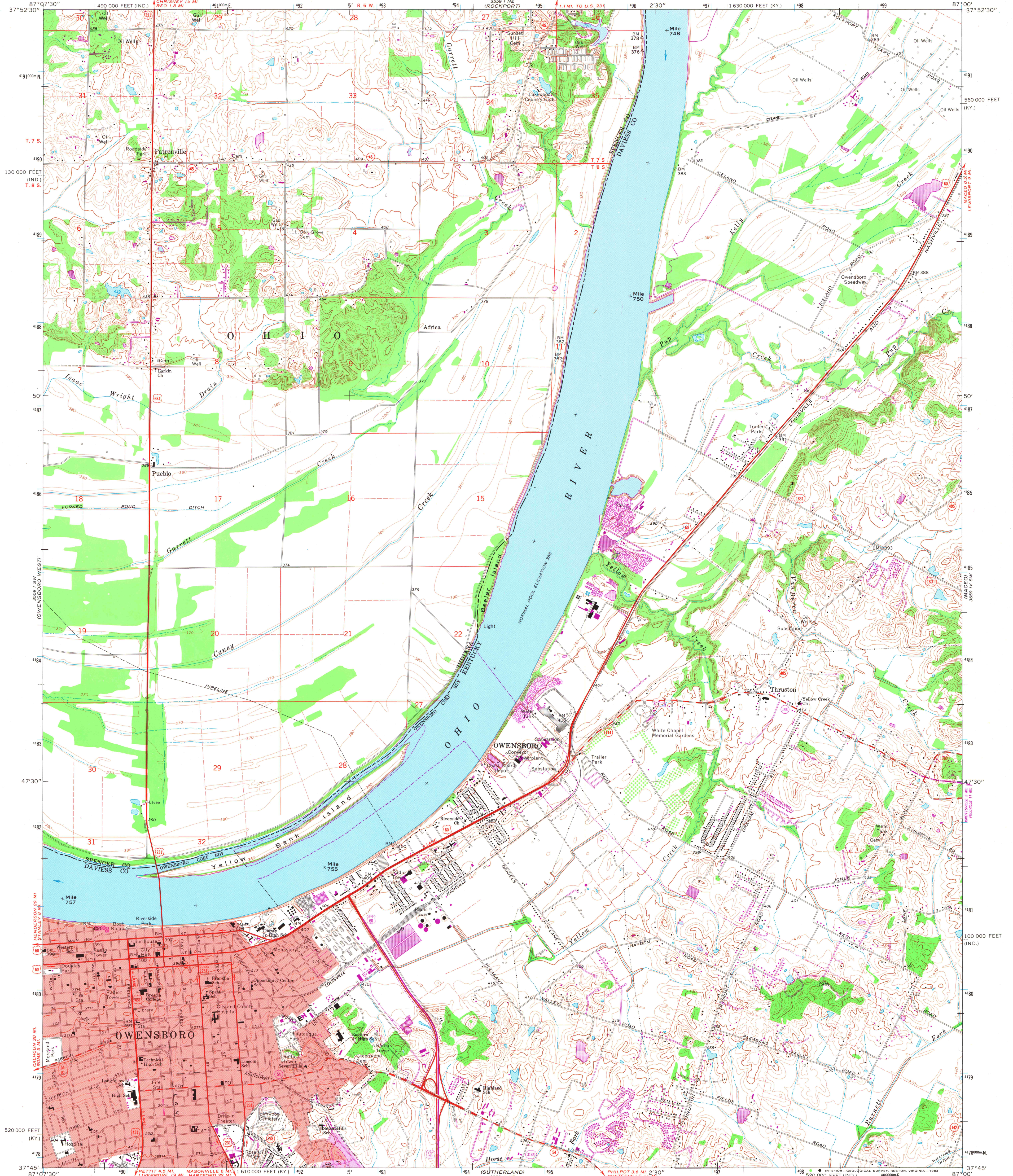


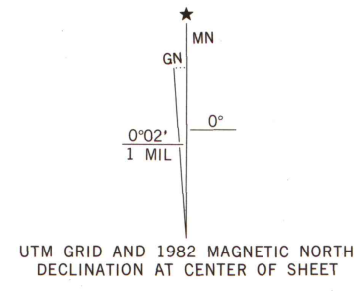
UNITED STATES
DEPARTMENT OF THE INTERIOR
GEOLOGICAL SURVEY

STATE OF KENTUCKY
KENTUCKY GEOLOGICAL SURVEY
UNIVERSITY OF KENTUCKY

OWENSBORO EAST QUADRANGLE
KENTUCKY-INDIANA
7.5 MINUTE SERIES (TOPOGRAPHIC)



Maped, edited, and published by the Geological Survey
Control by USGS, NOS/NOAA, and USCE
Planimetry by photogrammetric methods from aerial photographs
taken 1950. Topography by planimetric surveys 1951-52. Revised
from aerial photographs taken 1967. Field checked 1967
Polyconic projection. 10,000-foot grid ticks based on Kentucky
coordinate system, south zone, and Indiana coordinate system,
west zone. 1000-meter Universal Transverse Mercator grid
ticks, zone 16, shown in blue. 1927 North American Datum
To place on the predicted North American Datum 1983 move the
projection lines 4 meters south and 1 meter east as shown by
dashed corner ticks
Fine red dashed lines indicate selected fence and field lines where
generally visible on aerial photographs. This information is unchecked
Red tint indicates areas in which only landmark buildings are shown
The state boundary as shown represents the approximate position
of the low water line as determined from U. S. Corps of Engineers
Ohio River charts, surveyed 1912, and supplementary information



SCALE 1:24,000
CONTOUR INTERVAL 10 FEET
NATIONAL GEODETIC VERTICAL DATUM OF 1929

THIS MAP COMPLIES WITH NATIONAL MAP ACCURACY STANDARDS
FOR SALE BY U. S. GEOLOGICAL SURVEY, RESTON, VIRGINIA 22092,
KENTUCKY GEOLOGICAL SURVEY, LEXINGTON, KENTUCKY 40506,
KENTUCKY DEPARTMENT OF COMMERCE, FRANKFORT, KENTUCKY 40601,
AND INDIANA DEPARTMENT OF NATURAL RESOURCES, INDIANAPOLIS, INDIANA 46204
A FOLDER DESCRIBING TOPOGRAPHIC MAPS AND SYMBOLS IS AVAILABLE ON REQUEST

Revisions shown in purple and woodland compiled in cooperation
with State of Kentucky agencies from aerial photographs taken
1981 and other sources. Contours adjusted adjacent to certain
photorevised hydrographic features. This information not field
checked. Map edited 1982
Purple tint indicates extension of urban areas

ROAD CLASSIFICATION
Primary highway, all weather, hard surface
Secondary highway, all weather, hard surface
Light-duty road, all weather, improved surface
Unimproved road, fair or dry weather
U. S. Route
State Route

OWENSBORO EAST, KY.-IND.
N3745-W8700/7.5
1967
PHOTOREVISED 1982
DMA 3559 I SE-SERIES V853
ARTHUR H. ROBINSON MAP LIBRARY
University of Wisconsin-Madison

FEB 2 1984
University of Wisconsin-Madison