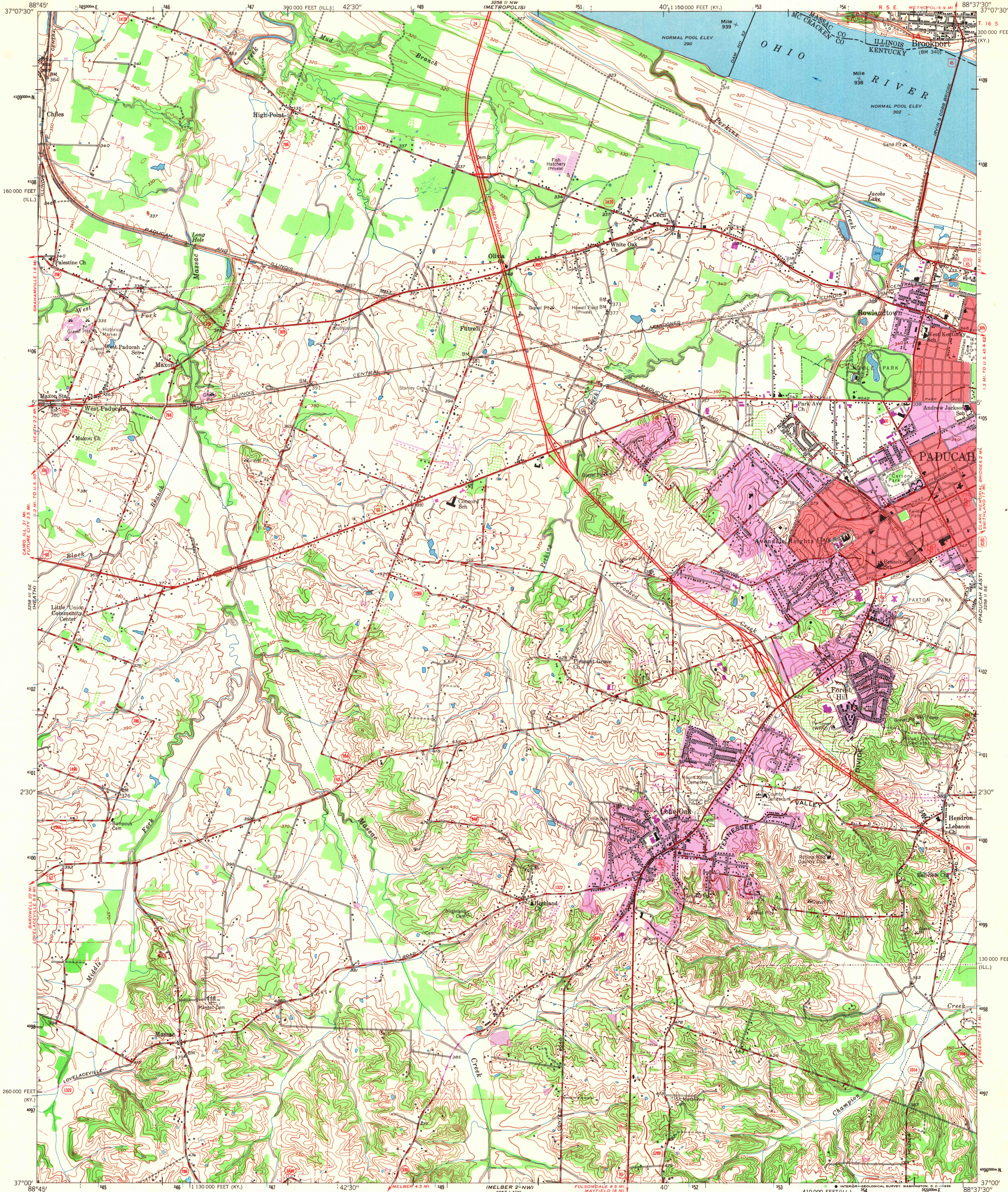


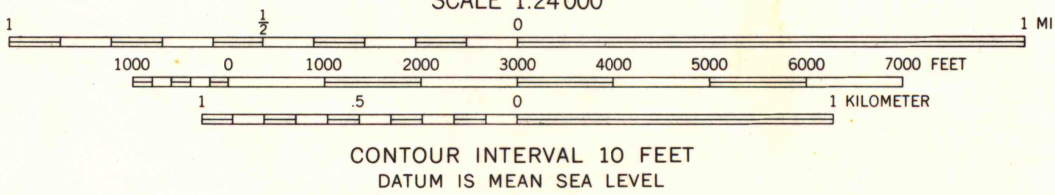
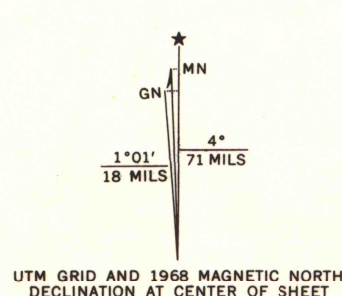
UNITED STATES
DEPARTMENT OF THE INTERIOR
GEOLOGICAL SURVEY

STATE OF KENTUCKY
KENTUCKY GEOLOGICAL SURVEY
UNIVERSITY OF KENTUCKY

PADUCAH WEST QUADRANGLE
KENTUCKY-ILLINOIS
7.5 MINUTE SERIES (TOPOGRAPHIC)
SW 1/4 PADUCAH 15' QUADRANGLE

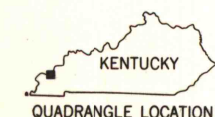


Mapped, edited, and published by the Geological Survey
Control by USGS, USC&GS, and Tennessee Valley Authority
Planimetry by photogrammetric methods from aerial photographs
taken 1952. Topography by planimetric surveys 1954. Revised 1958
Polyconic projection. 1927 North American datum
10,000-foot grids based on Kentucky coordinate system,
south zone, and Illinois coordinate system, east zone
1000-meter Universal Transverse Mercator grid ticks,
zone 16, shown in blue
Fine red dashed lines indicate selected fence and field lines
visible on aerial photographs. This information is unchecked
The state boundary as shown represents the approximate position of
the low water line as determined from U. S. Corps of Engineers, Ohio
River Charts, surveyed 1912, and supplementary information
Red tint indicates areas in which only landmark buildings are shown



THIS MAP COMPLIES WITH NATIONAL MAP ACCURACY STANDARDS
FOR SALE BY U. S. GEOLOGICAL SURVEY, WASHINGTON, D. C. 20242,
KENTUCKY GEOLOGICAL SURVEY, LEXINGTON, KENTUCKY 40506,
KENTUCKY DEPARTMENT OF COMMERCE, FRANKFORT, KENTUCKY 40601,
AND BY U. S. TENNESSEE VALLEY AUTHORITY,
CHATTANOOGA, TENN. 37401 OR KNOXVILLE, TENN. 37902
A FOLDER DESCRIBING TOPOGRAPHIC MAPS AND SYMBOLS IS AVAILABLE ON REQUEST

MAP AND AIR PHOTO LIBRARY
University of Wisconsin



ROAD CLASSIFICATION
Heavy-duty ——— Light-duty ———
Medium-duty ——— Unimproved dirt ———
Interstate Route — U.S. Route — State Route

PADUCAH WEST KY-ILL.
SW 1/4 PADUCAH 15' QUADRANGLE
N 3700-W8837.5/7.5
1958
PHOTOREVISED 1968
AMS 3258 II SW-SERIES V853

Revisions shown in purple compiled from aerial photographs
taken 1966. This information not field checked
Purple tint indicates extension of urban areas