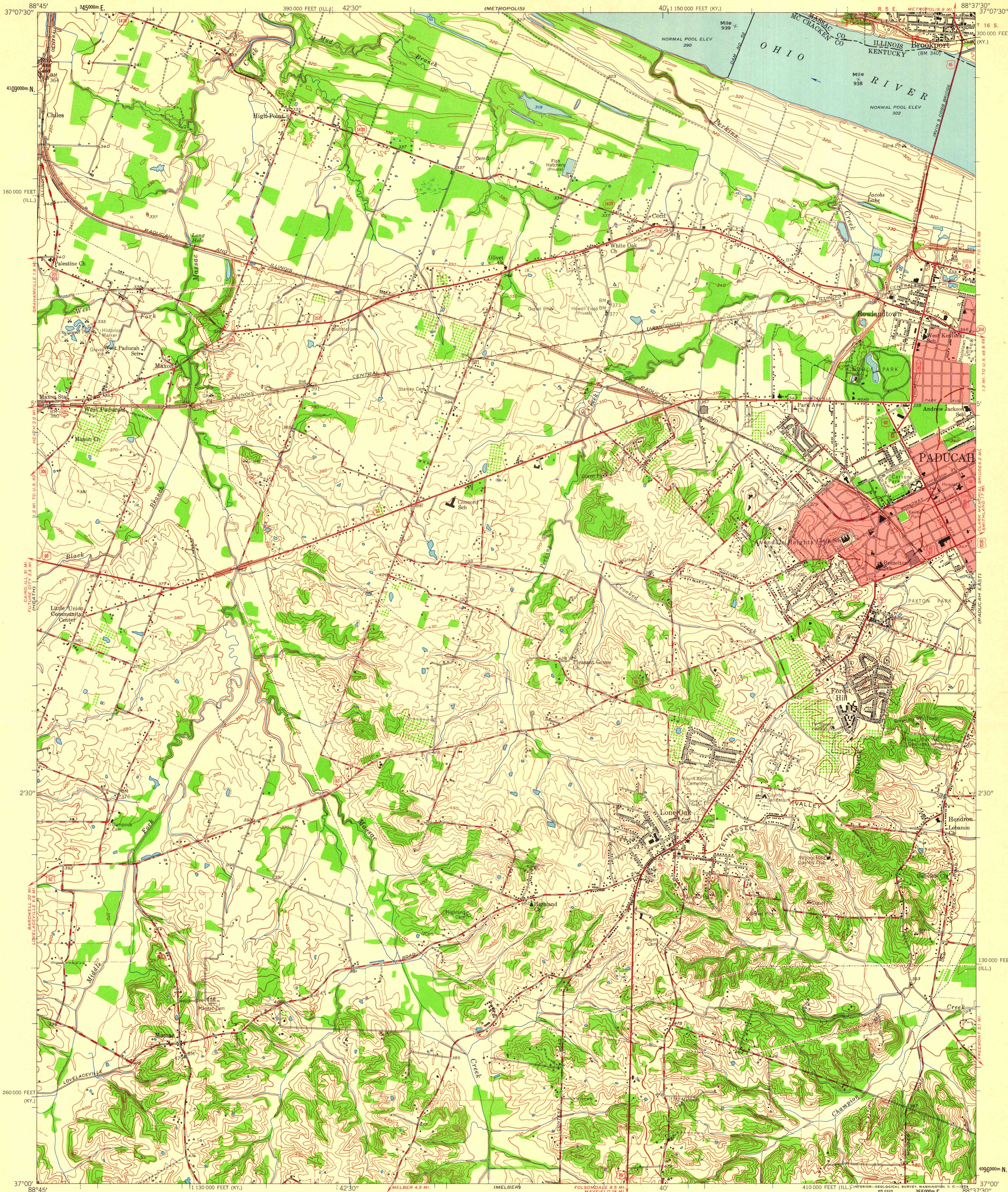


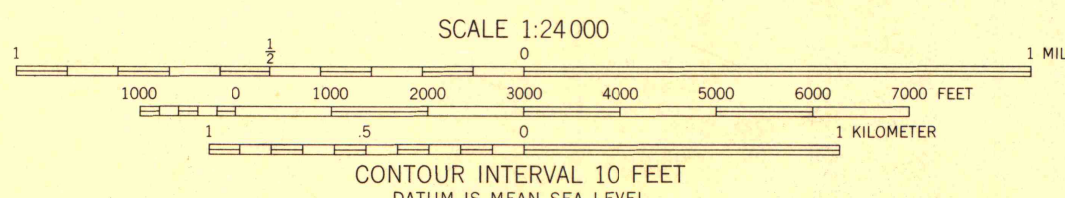
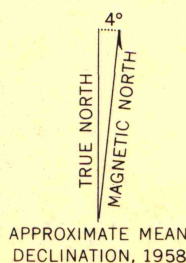
UNITED STATES  
DEPARTMENT OF THE INTERIOR  
GEOLOGICAL SURVEY

STATE OF KENTUCKY  
DEPARTMENT OF ECONOMIC DEVELOPMENT

PADUCAH WEST QUADRANGLE  
KENTUCKY-ILLINOIS  
7.5 MINUTE SERIES (TOPOGRAPHIC)  
SW 1/4 PADUCAH 15' QUADRANGLE

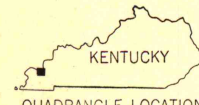


Mapped, edited, and published by the Geological Survey  
Control by USGS, USCGS, and TVA  
Culture and drainage in part compiled from aerial photographs  
taken 1952. Topography by planetable surveys 1954. Revised 1958  
Polyconic projection. 1927 North American datum  
10,000-foot grids based on Kentucky coordinate system,  
south zone, and Illinois coordinate system, east zone  
1000-meter Universal Transverse Mercator grid ticks,  
zone 16, shown in blue  
Fine red dashed lines indicate selected fence and field lines  
visible on aerial photographs. This information is unchecked  
The state boundary as shown represents the approximate position of  
the low water line as determined from U.S. Corps of Engineers, Ohio  
River Charts, surveyed 1912, and supplementary information  
Red tint indicates areas in which only landmark buildings are shown



THIS MAP COMPLIES WITH NATIONAL MAP ACCURACY STANDARDS  
FOR SALE BY U. S. GEOLOGICAL SURVEY, WASHINGTON 25, D. C.  
KENTUCKY DEPARTMENT OF ECONOMIC DEVELOPMENT, FRANKFORT, KENTUCKY,  
AND U. S. TENNESSEE VALLEY AUTHORITY, CHATTANOOGA OR KNOXVILLE, TENN.  
A FOLDER DESCRIBING TOPOGRAPHIC MAPS AND SYMBOLS IS AVAILABLE ON REQUEST

ROAD CLASSIFICATION  
Heavy-duty ——— Light-duty ———  
Medium-duty ——— Unimproved dirt ———  
U.S. Route ——— State Route ———



PADUCAH WEST KY.-ILL.  
SW 1/4 PADUCAH 15' QUADRANGLE  
N3700-W8837.5/7.5

MAP AND AIR PHOTO LIBRARY  
University of Wisconsin

1958