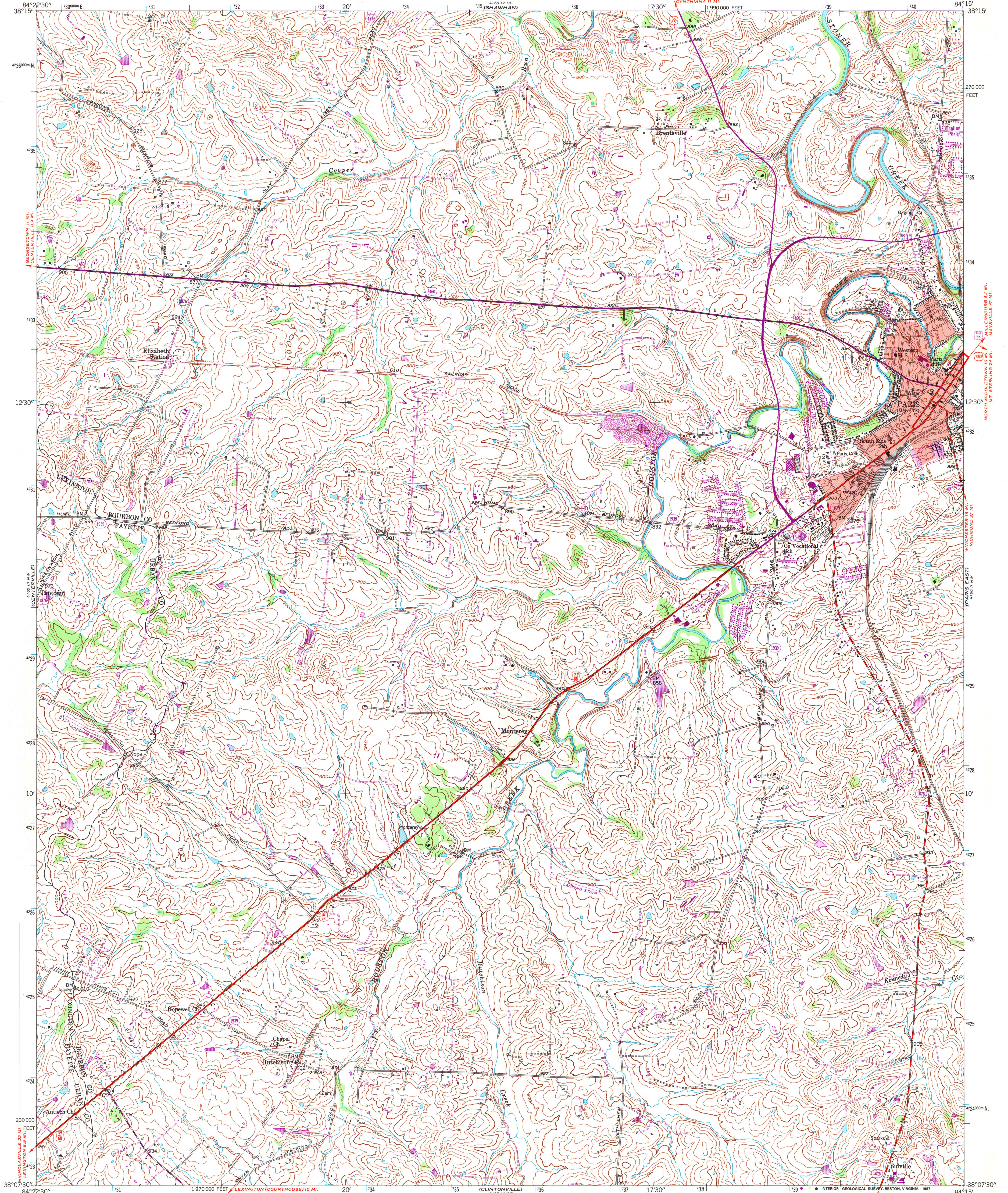


UNITED STATES
DEPARTMENT OF THE INTERIOR
GEOLOGICAL SURVEY

STATE OF KENTUCKY
AGRICULTURAL AND INDUSTRIAL DEVELOPMENT BOARD

PARIS WEST QUADRANGLE
KENTUCKY
7.5 MINUTE SERIES (TOPOGRAPHIC)
NE/4 LEXINGTON 15' QUADRANGLE



Maped, edited, and published by the Geological Survey

Control by USGS and USC&GS

Topography from aerial photographs by stereophotogrammetric methods. Aerial photographs taken 1952. Field check 1954

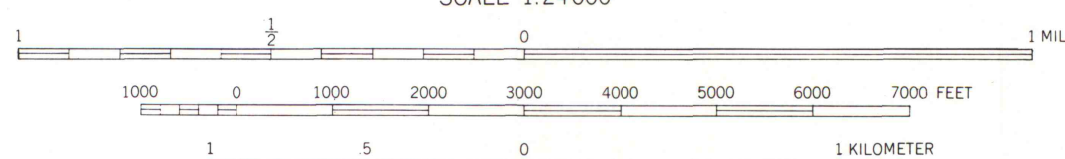
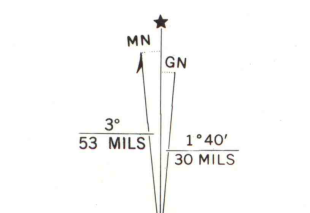
Polyconic projection. 1927 North American datum
10,000-foot grid based on Kentucky coordinate system,
north zone

Red tint indicates area in which only
landmark buildings are shown

1000-meter Universal Transverse Mercator grid ticks,
zone 16, shown in blue

To place on the predicted North American Datum 1983
move the projection lines 4 meters south and
6 meters west as shown by dashed corner ticks

Revisions shown in purple and woodland compiled in cooperation
with State of Kentucky agencies from aerial photographs taken 1984
and other sources. Contours adjusted adjacent to certain photorevised
hydrographic features. This information not field checked. Map edited 1987
Purple tint indicates extension of urban areas



CONTOUR INTERVAL 10 FEET
NATIONAL GEODETIC VERTICAL DATUM OF 1929

THIS MAP COMPLIES WITH NATIONAL MAP ACCURACY STANDARDS
FOR SALE BY U. S. GEOLOGICAL SURVEY, DENVER, COLORADO 80225 OR RESTON, VIRGINIA 22092,
KENTUCKY GEOLOGICAL SURVEY, LEXINGTON, KENTUCKY 40506,
AND KENTUCKY DEPARTMENT OF COMMERCE, FRANKFORT, KENTUCKY 40601
A FOLDER DESCRIBING TOPOGRAPHIC MAPS AND SYMBOLS IS AVAILABLE ON REQUEST

U.S. Regional
Depository Copy
DO NOT DISCARD



ROAD CLASSIFICATION
Heavy-duty _____ Light-duty _____
Medium-duty _____ Unimproved dirt _____
U. S. Route _____ State Route _____

AM. ROBINSON
MAP LIBRARY
MAR 28 1988

University of Wisconsin
Madison

PARIS WEST, KY.
NE/4 LEXINGTON 15' QUADRANGLE
38084-B3-TF-024

1954
PHOTOREVISED 1987
DMA 4160 III NE-SERIES V853