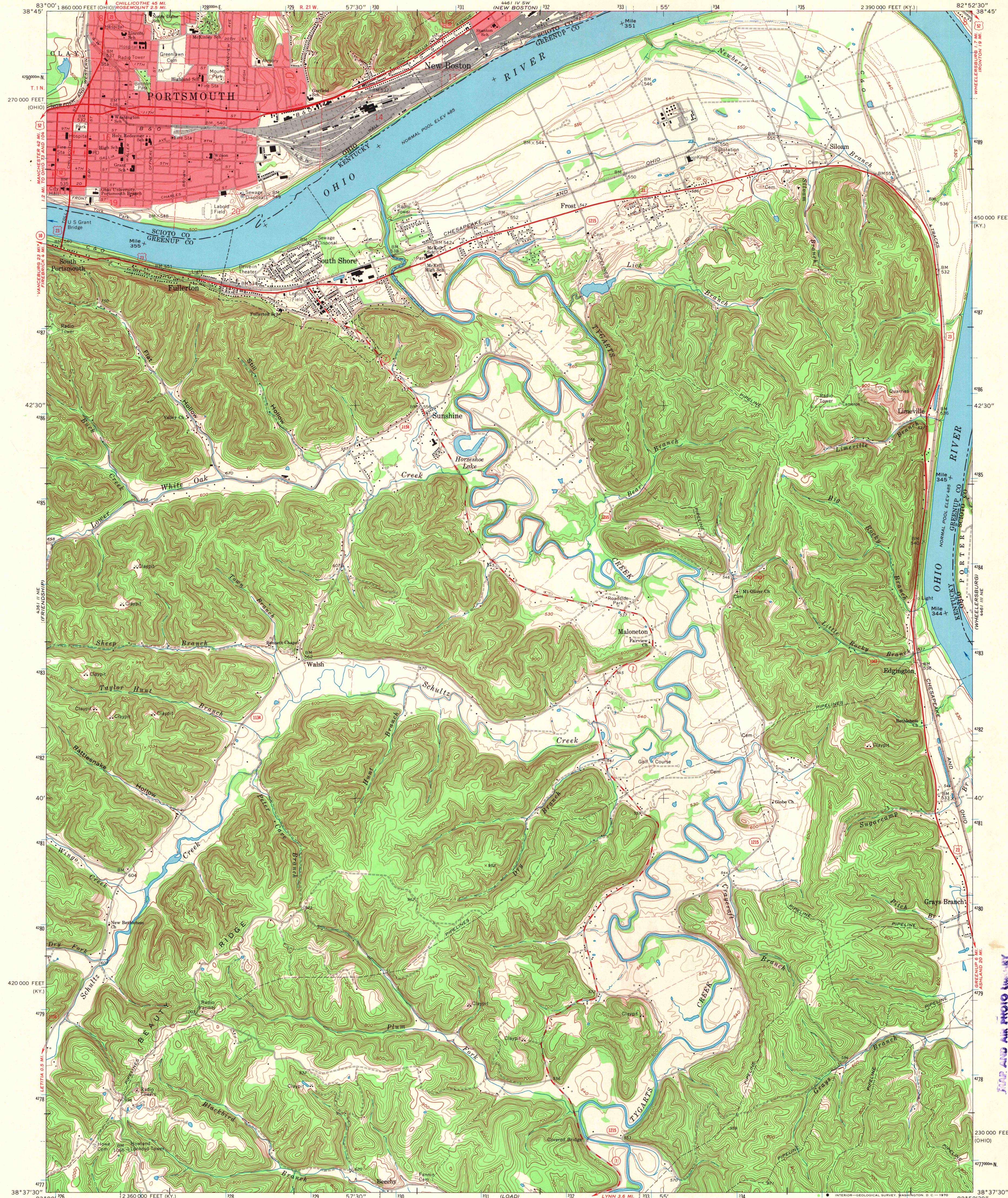
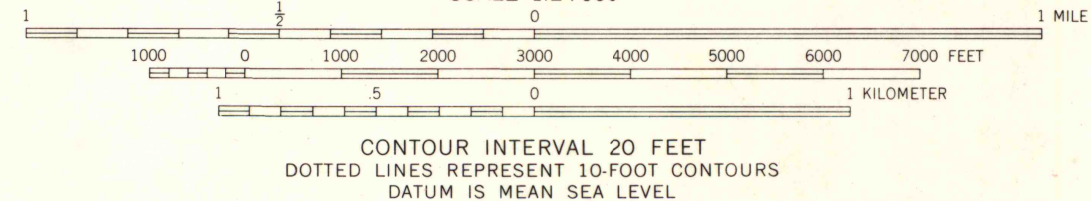
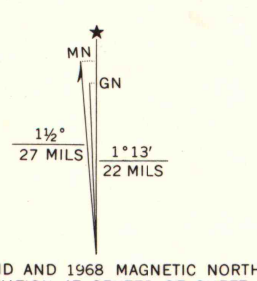


UNITED STATES
DEPARTMENT OF THE INTERIOR
GEOLOGICAL SURVEY

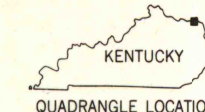
PORTSMOUTH QUADRANGLE
KENTUCKY-OHIO
7.5 MINUTE SERIES (TOPOGRAPHIC)
NW/4 GREENUP 15' QUADRANGLE



Maped, edited, and published by the Geological Survey in cooperation with State of Kentucky agencies. Revised in cooperation with State of Ohio agencies. Control by USGS, USC&GS, and USCE. Topography by photogrammetric methods from aerial photographs taken 1952. Field checked 1953. Revised from aerial photographs taken 1966. Field checked 1968. Polyconic projection. 1927 North American datum. 10,000-foot grids based on Kentucky coordinate system, north zone, and Ohio coordinate system, south zone. 1000-meter Universal Transverse Mercator grid ticks, zone 17, shown in blue. Fine red dashed lines indicate selected fence and field lines where generally visible on aerial photographs. This information is unchecked. The state boundary as shown represents the approximate position of the low water line as determined from U.S. Corps of Engineers Ohio River charts, surveyed 1913-1914, and supplementary information. Red tint indicates areas in which only landmark buildings are shown. Ohio area lies within Congress Lands East of the Scioto River. Land lines based on the Ohio River Base.



THIS MAP COMPLIES WITH NATIONAL MAP ACCURACY STANDARDS
FOR SALE BY U.S. GEOLOGICAL SURVEY, WASHINGTON, D.C. 20242,
KENTUCKY GEOLOGICAL SURVEY, LEXINGTON, KENTUCKY 40506,
AND KENTUCKY DEPARTMENT OF COMMERCE, FRANKFORT, KENTUCKY 40601
A FOLDER DESCRIBING TOPOGRAPHIC MAPS AND SYMBOLS IS AVAILABLE ON REQUEST



ROAD CLASSIFICATION
Primary highway, all weather, hard surface. Light-duty road, all weather, improved surface.
Secondary highway, all weather, hard surface. Unimproved road, fair or dry weather.
U.S. Route. State Route.

PORTSMOUTH, KY-OHIO
NW/4 GREENUP 15' QUADRANGLE
N3837.5-W8252.5/7.5

1968

AMS 4461 III NW-SERIES V853

FOR AND AM PHOTO COPY
AUG 28 1970
University of Kentucky