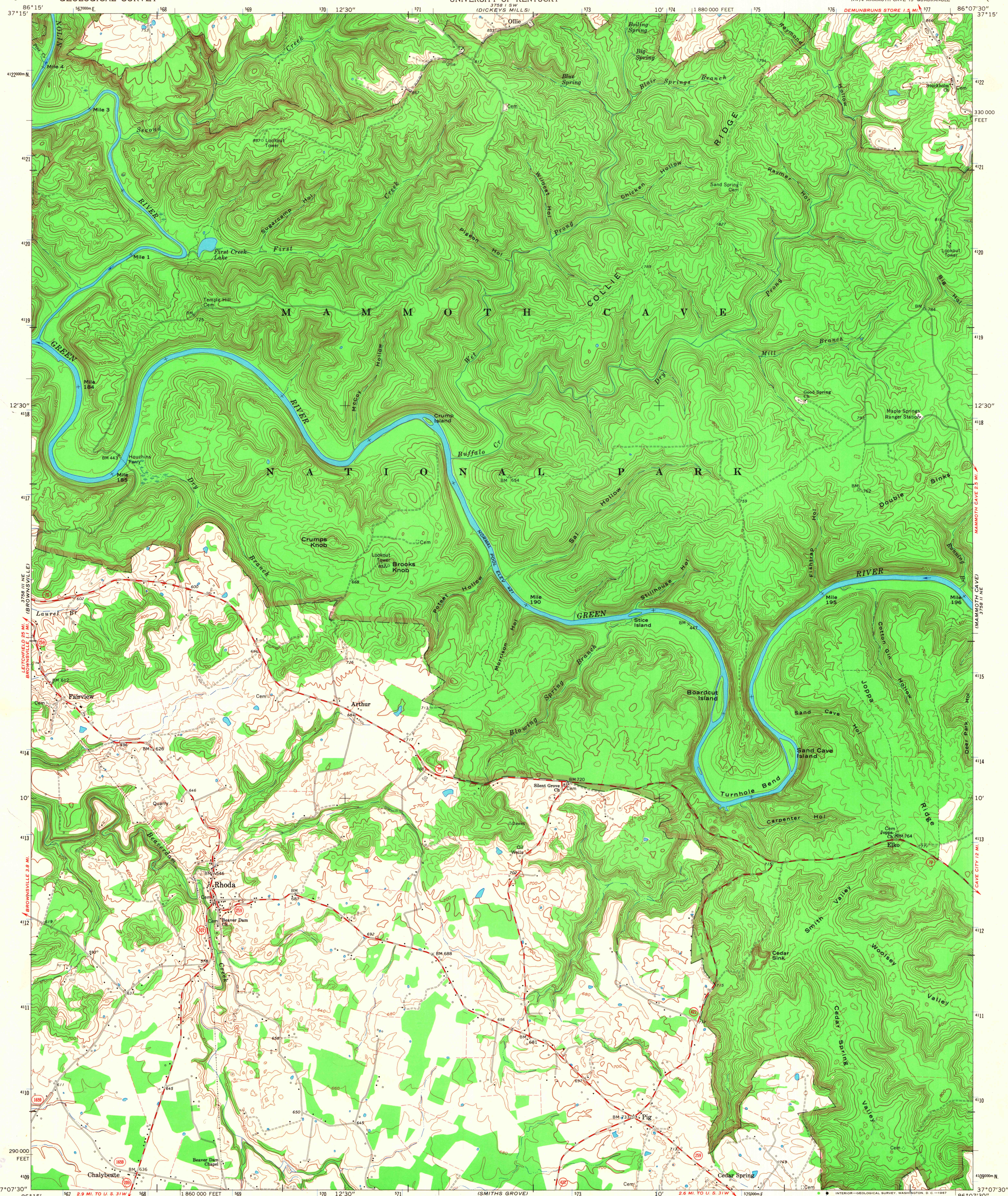


UNITED STATES
DEPARTMENT OF THE INTERIOR
GEOLOGICAL SURVEY

STATE OF KENTUCKY
KENTUCKY GEOLOGICAL SURVEY
UNIVERSITY OF KENTUCKY

RHODA QUADRANGLE
KENTUCKY—EDMONSON CO.
7.5 MINUTE SERIES (TOPOGRAPHIC)
NW/4 MAMMOTH CAVE 15' QUADRANGLE



Mapped, edited, and published by the Geological Survey
Control by USGS, USC&GS, and USCE
Topography by photogrammetric methods from aerial photographs
taken 1953. Field checked 1954. Revised 1965
Polyconic projection. 1927 North American datum
10,000-foot grid based on Kentucky coordinate system, south zone
1000-meter Universal Transverse Mercator grid ticks, zone 16,
shown in blue
Fine red dashed lines indicate selected fence and field lines where
generally visible on aerial photographs. This information is unchecked

UTM GRID AND 1965 MAGNETIC NORTH
DECLINATION AT CENTER OF SHEET.

THIS MAP COMPLIES WITH NATIONAL MAP ACCURACY STANDARDS
FOR SALE BY U. S. GEOLOGICAL SURVEY, WASHINGTON, D. C. 20242,
KENTUCKY GEOLOGICAL SURVEY, LEXINGTON, KENTUCKY 40506,
AND KENTUCKY DEPARTMENT OF COMMERCE, FRANKFORT, KENTUCKY 40601
A FOLDER DESCRIBING TOPOGRAPHIC MAPS AND SYMBOLS IS AVAILABLE ON REQUEST

ROAD CLASSIFICATION

Medium-duty Light-duty

Unimproved dirt

 State Route

MAAD AND AIR LIBRARY
University of Wisconsin

RHODA, KY.
NW/4 MAMMOTH CAVE 15' QUADRANGLE
N3707.5—W8607.5/7.5

1965
AMS 3758 II NW—SERIES V853