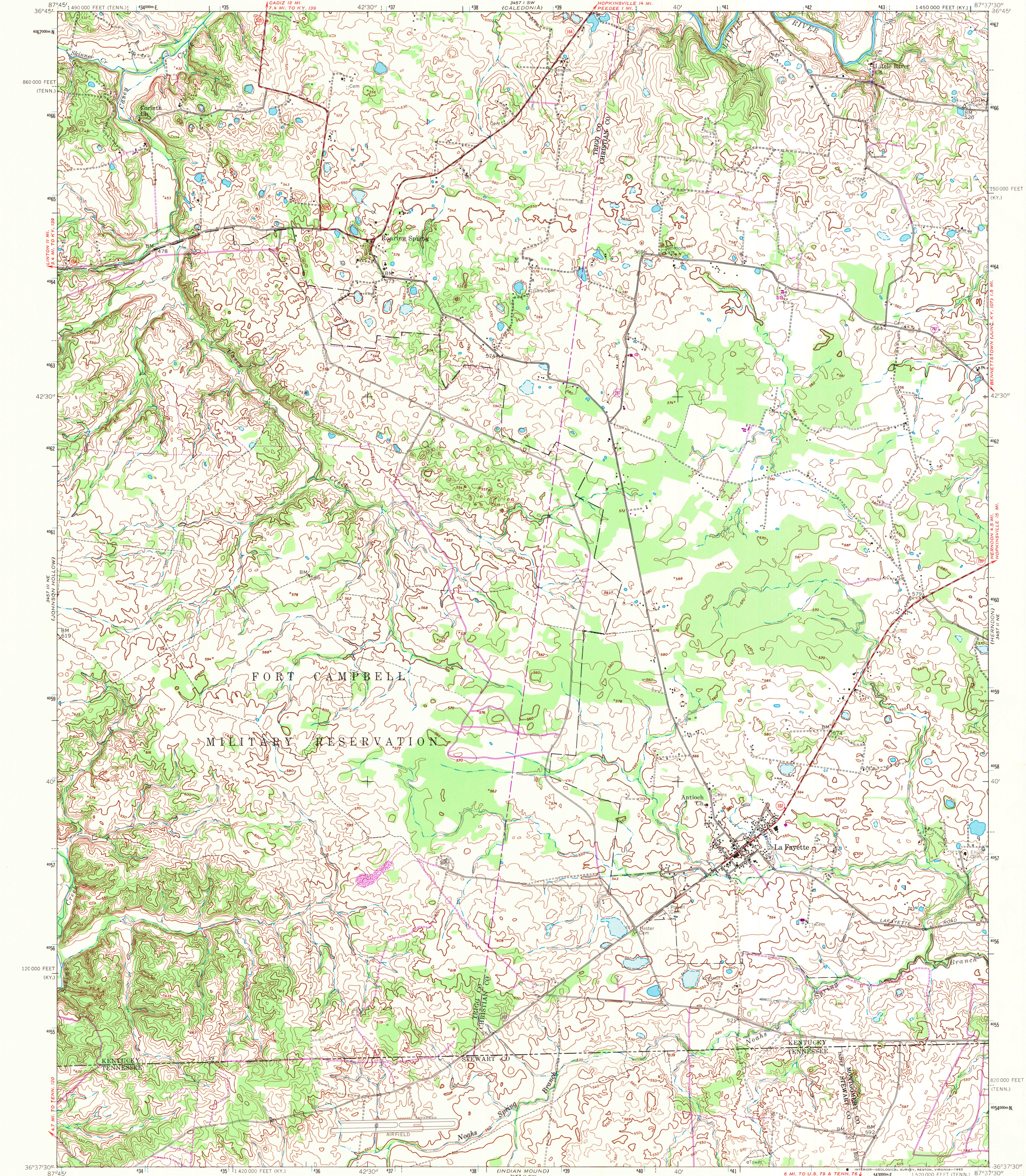


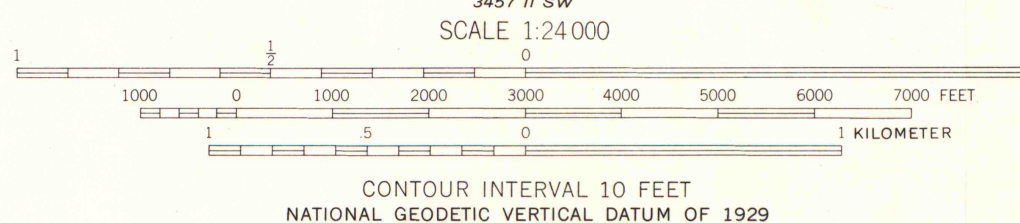
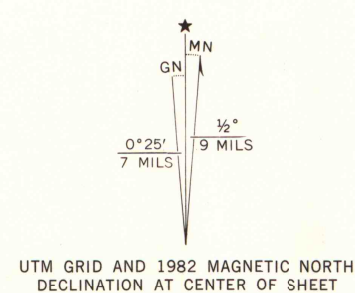
UNITED STATES
DEPARTMENT OF THE INTERIOR
GEOLOGICAL SURVEY

UNITED STATES
DEPARTMENT OF THE ARMY
CORPS OF ENGINEERS

ROARING SPRING QUADRANGLE
KENTUCKY-TENNESSEE
7.5 MINUTE SERIES (TOPOGRAPHIC)
NW 1/4 HERNDON 15' QUADRANGLE

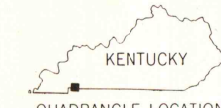
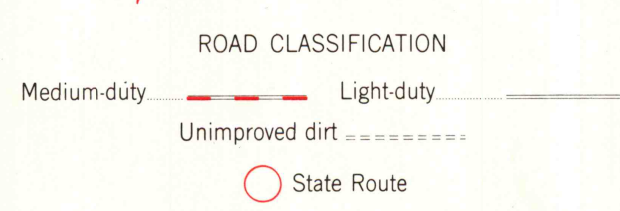


Mapped by the Army Map Service
Published for civil use by the Geological Survey
Control by USGS, NOS/NOAA, USCE, and Tennessee Valley Authority
Topography by photogrammetric methods from aerial photographs
taken 1951. Planimetric detail revised from aerial photographs
taken 1956. Field checked 1957
Polyconic projection. 10,000-foot grid ticks based on Kentucky
coordinate system, south zone, and Tennessee coordinate system
1000-meter Universal Transverse Mercator grid ticks, zone 16
shown in blue. 1927 North American Datum. To place on the
predicted North American Datum 1983 move the projection lines
5 meters south and 2 meters east as shown by dashed corner ticks
There may be private inholdings within the boundaries
of the National or State reservations shown on this map



THIS MAP COMPLIES WITH NATIONAL MAP ACCURACY STANDARDS
FOR SALE BY U.S. GEOLOGICAL SURVEY, RESTON, VIRGINIA 22092,
KENTUCKY GEOLOGICAL SURVEY, LEXINGTON, KENTUCKY 40506,
KENTUCKY DEPARTMENT OF COMMERCE, FRANKFORT, KENTUCKY 40601,
AND TENNESSEE DEPARTMENT OF CONSERVATION, DIVISION OF GEOLOGY, NASHVILLE, TENN. 37219
A FOLDER DESCRIBING TOPOGRAPHIC MAPS AND SYMBOLS IS AVAILABLE ON REQUEST

Revisions shown in purple and woodland compiled by the
Geological Survey in cooperation with State of Kentucky
agencies from aerial photographs taken 1981 and other sources
Contours adjusted adjacent to certain photorevised hydrographic
features. This information not field checked. Map edited 1982



ROARING SPRING, KY.-TENN. A.H. ROBINSON
NW 1/4 HERNDON 15' QUADRANGLE
N 3637.5-W 8737.5
OCT 18 1983
PHOTOREVISED 1982
DMA 3457 II NW-SERIES V853
ARTHUR H. ROBINSON MAP LIBRARY
University of Wisconsin-Madison