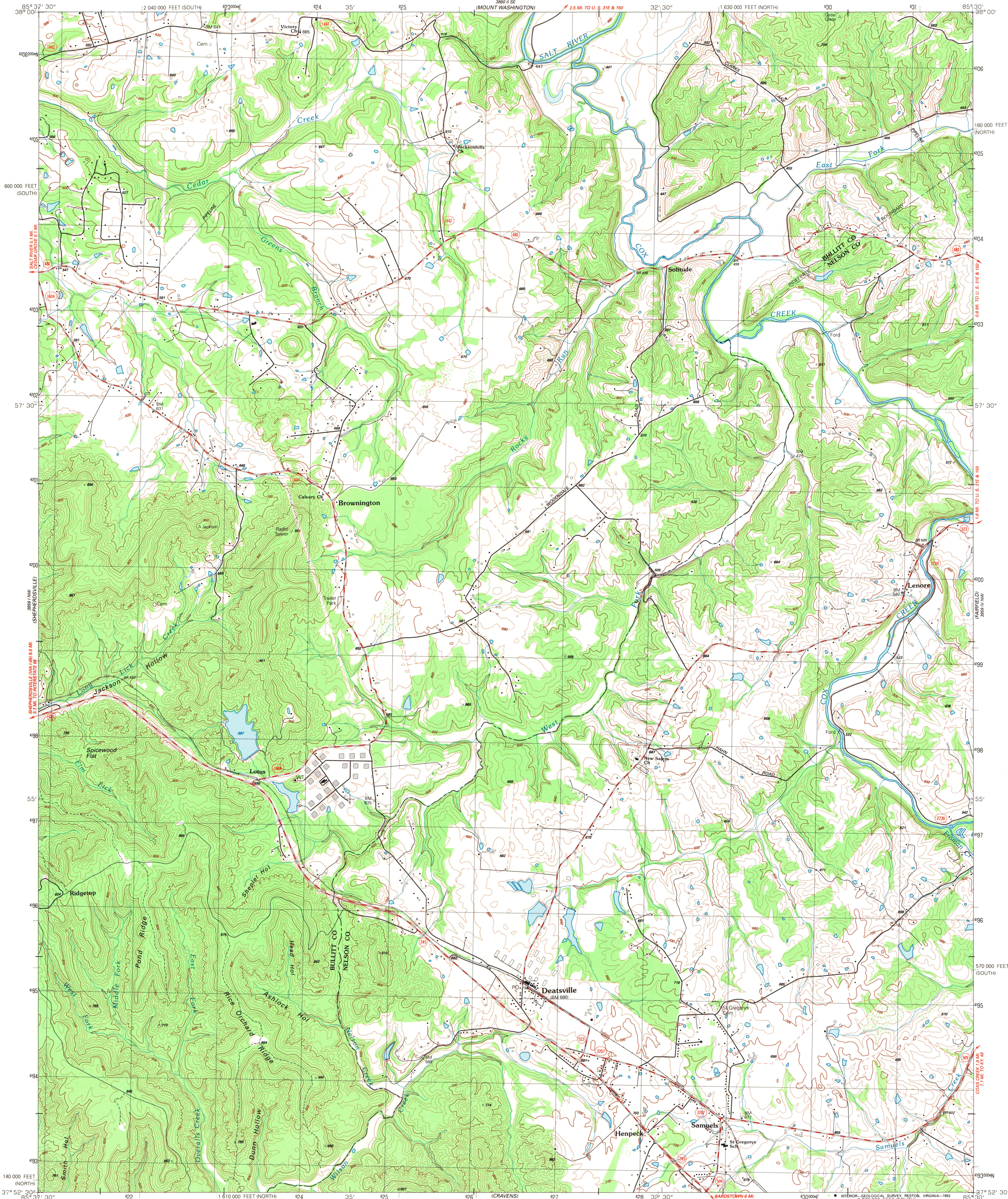


UNITED STATES
DEPARTMENT OF THE INTERIOR
GEOLOGICAL SURVEY

SAMUELS QUADRANGLE
KENTUCKY
7.5 MINUTE SERIES (TOPOGRAPHIC)
NE/4 SHEPHERDSVILLE 15 QUADRANGLE



Produced by the United States Geological Survey

Control by USGS and NOS/NOAA

Compiled from aerial photographs taken 1987

Field checked 1989. Map edited 1991

Projection: Kentucky coordinate system, north zone

(Lambert conformal conic)

10,000-foot grid ticks: Kentucky coordinate

system, north and south zones

1000-meter Universal Transverse Mercator grid, zone 16

1927 North American Datum

The difference between 1927 North American Datum and North

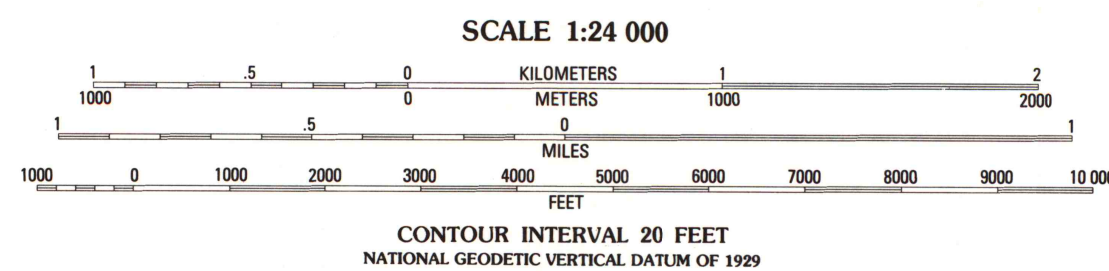
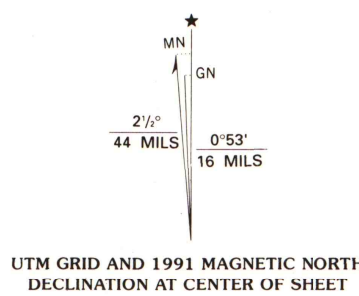
American Datum of 1983 (NAD 83) for 7.5-minute intersections

is given in USGS Bulletin 1875. The NAD 83 is shown by

dashed corner ticks

Fine red dashed lines indicate selected fence and field lines where

generally visible on aerial photographs. This information is unchecked



THIS MAP COMPLIES WITH NATIONAL MAP ACCURACY STANDARDS
FOR SALE BY U.S. GEOLOGICAL SURVEY, DENVER, COLORADO 80225, OR RESTON, VIRGINIA 22092
KENTUCKY GEOLOGICAL SURVEY, LEXINGTON, KENTUCKY 40506
AND KENTUCKY DEPARTMENT OF COMMERCE, FRANKFORT, KENTUCKY 40601
A FOLDER DESCRIBING TOPOGRAPHIC MAPS AND SYMBOLS IS AVAILABLE ON REQUEST

ROAD CLASSIFICATION	
Primary highway, hard surface	Light-duty road, hard or improved surface
Secondary highway, hard surface	Unimproved road
Interstate Route	U. S. Route
	State Route



U.S. Depository Copy
DO NOT DISCARD

A.H. ROBINSON
MAP LIBRARY

DEC 21 1992

University of Wisconsin
Madison

SAMUELS, KY.
NE/4 SHEPHERDSVILLE 15 QUADRANGLE
37085-H5-TF-024

1991

DMA 3859 1 NE-SERIES V853