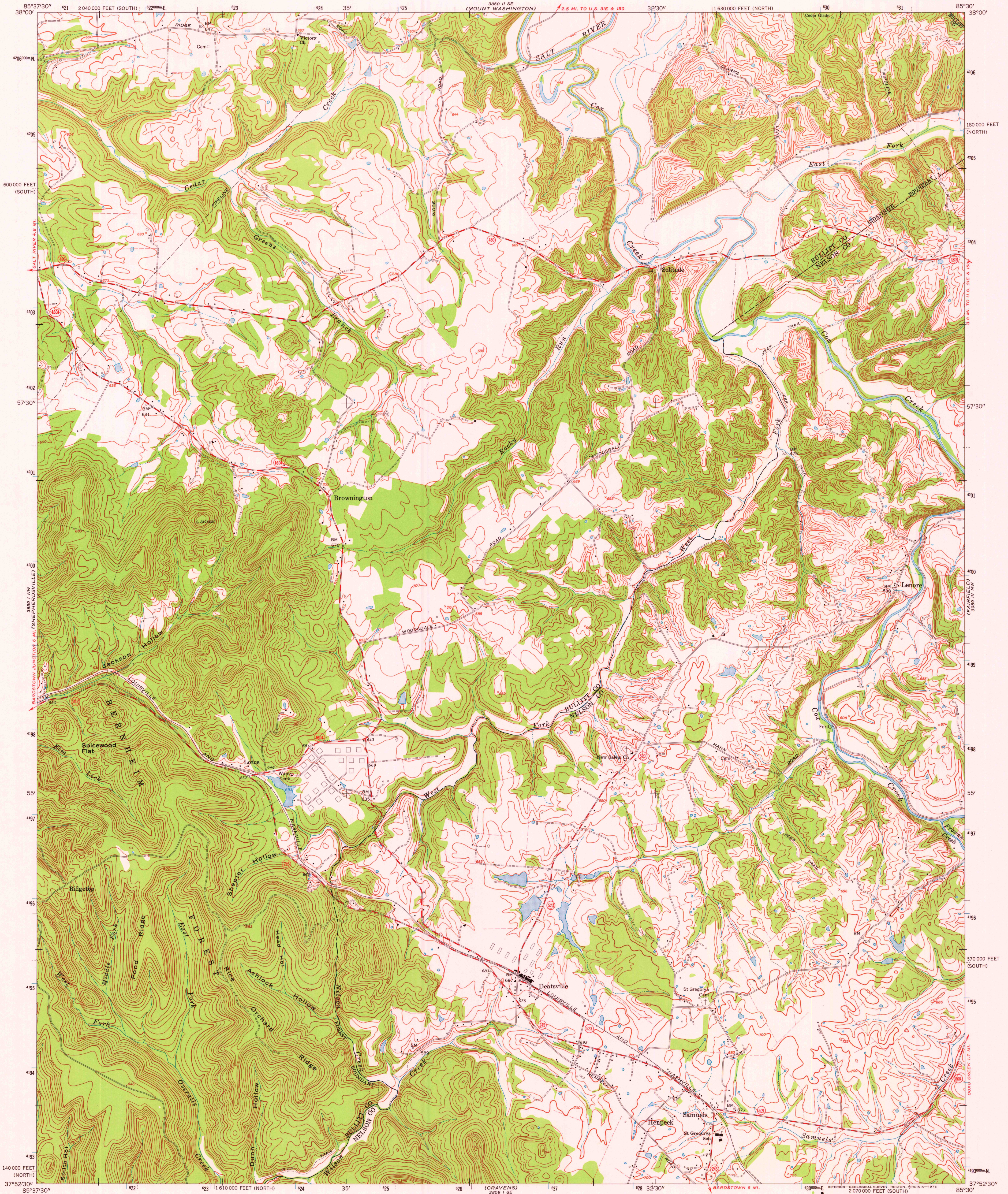
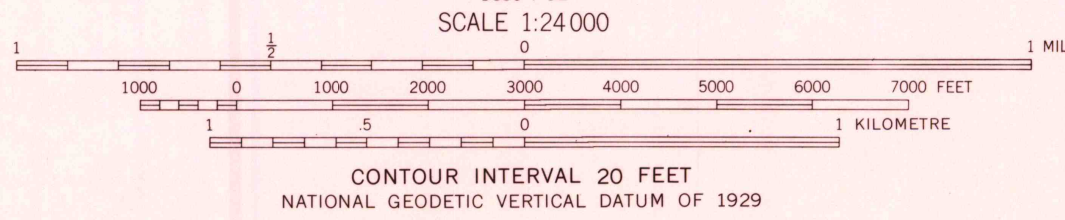


UNITED STATES  
DEPARTMENT OF THE INTERIOR  
GEOLOGICAL SURVEY

SAMUELS QUADRANGLE  
KENTUCKY  
7.5 MINUTE SERIES (TOPOGRAPHIC)  
NE/4 SHEPHERDSVILLE 15' QUADRANGLE

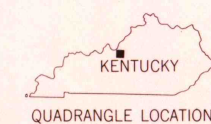


Mapped by the Army Map Service  
Published for civil use by the Geological Survey  
Revised in cooperation with State of Kentucky Geological Survey  
Control by USGS, USC&GS, and USCE  
Topography by photogrammetric methods from aerial  
photographs taken 1947. Field checked 1949. Revised 1962  
Polyconic projection. 1927 North American datum  
10,000-foot ticks based on Kentucky coordinate system,  
north and south zones  
1000-metre Universal Transverse Mercator grid ticks,  
zone 16, shown in blue  
Fine red dashed lines indicate selected fence and field lines where  
generally visible on aerial photographs. This information is unchecked



THIS MAP COMPLIES WITH NATIONAL MAP ACCURACY STANDARDS  
FOR SALE BY U. S. GEOLOGICAL SURVEY, RESTON, VIRGINIA 22092,  
KENTUCKY GEOLOGICAL SURVEY, LEXINGTON, KENTUCKY 40506,  
AND KENTUCKY DEPARTMENT OF COMMERCE, FRANKFORT, KENTUCKY 40601  
A FOLDER DESCRIBING TOPOGRAPHIC MAPS AND SYMBOLS IS AVAILABLE ON REQUEST

ROAD CLASSIFICATION  
Medium-duty ——— Light-duty ———  
Unimproved dirt ———  
State Route ———



SAMUELS, KY.  
NE/4 SHEPHERDSVILLE 15' QUADRANGLE  
N3752.5—W8530/7.5

JUN 29 1976

USGS  
Historical File  
Topographic Division

1962  
AMS 3859 I NE—SERIES V853