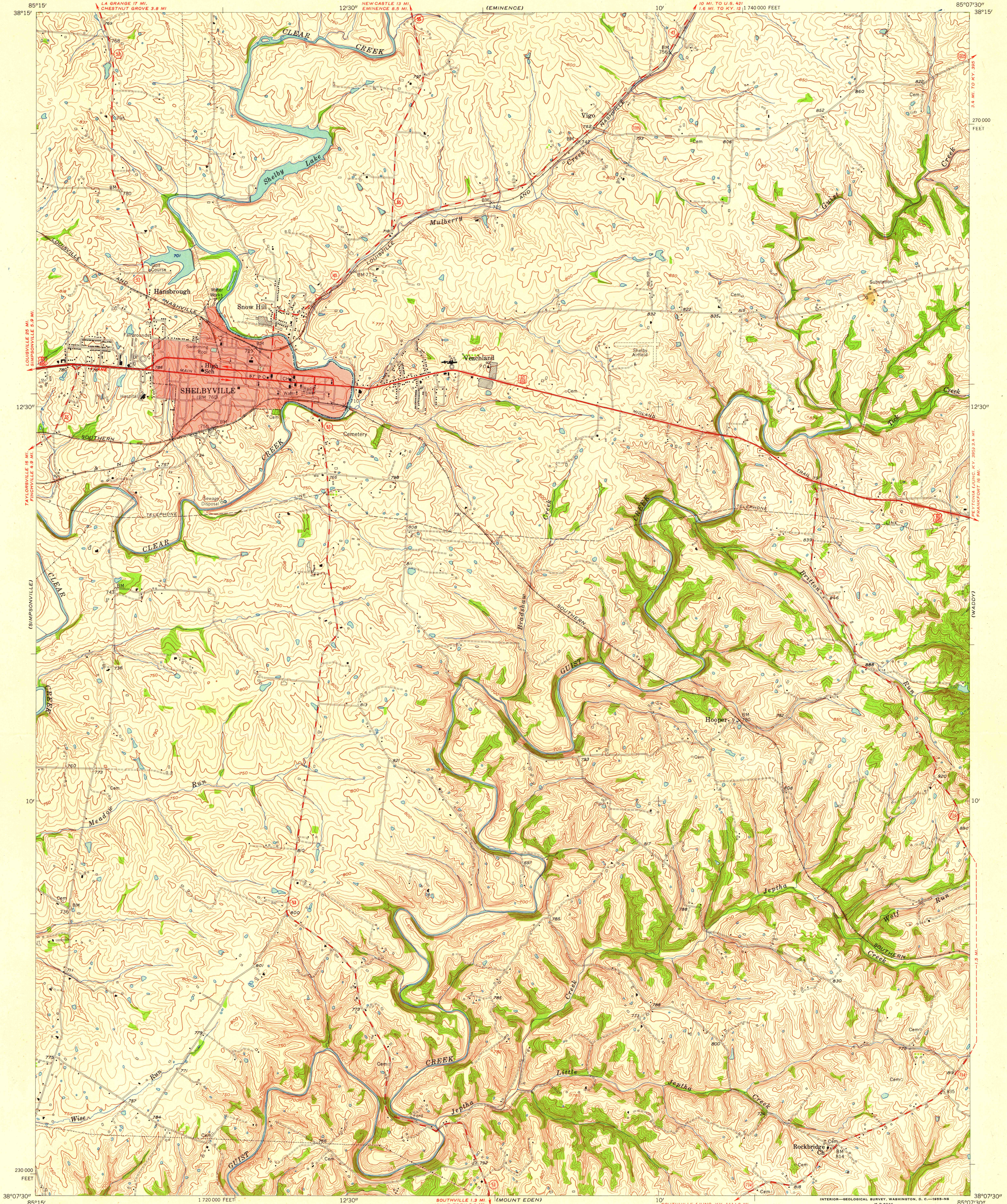


UNITED STATES
DEPARTMENT OF THE INTERIOR
GEOLOGICAL SURVEY

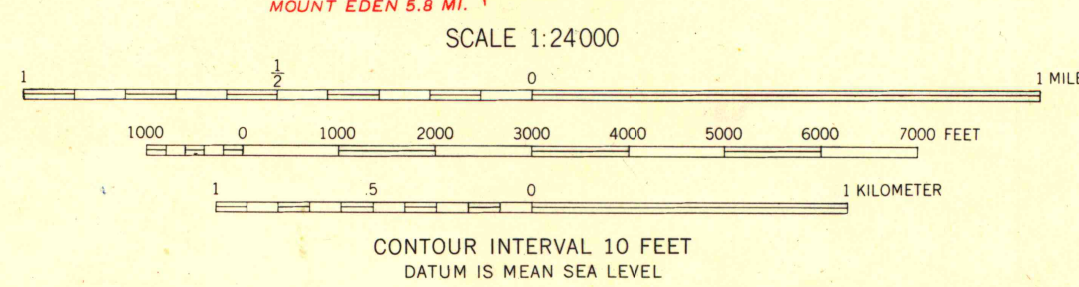
STATE OF KENTUCKY
AGRICULTURAL AND INDUSTRIAL DEVELOPMENT BOARD

SHELBYVILLE QUADRANGLE
KENTUCKY—SHELBY CO.
7.5 MINUTE SERIES (TOPOGRAPHIC)
NW/4 MOUNT EDEN 15' QUADRANGLE

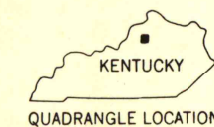


Mapped, edited, and published by the Geological Survey
Control by USGS and USC&GS
Topography from aerial photographs by stereophotogrammetric
methods. Aerial photographs taken 1952. Field check 1954
Polyconic projection. 1927 North American datum
10,000-foot grid based on Kentucky coordinate system,
north zone
Red tint indicates area in which only
landmark buildings are shown
Unchecked elevations are shown in brown

APPROXIMATE MEAN
DECLINATION, 1954



ROAD CLASSIFICATION
Heavy-duty _____ Light-duty _____
Medium-duty _____ Unimproved dirt _____
U. S. Route _____ State Route _____



SHELBYVILLE, KY.
NW/4 MOUNT EDEN 15' QUADRANGLE
N3807.5—W8507.5/7.5

UNIVERSITY OF WISCONSIN
Department of Geography

1954

THIS MAP COMPLIES WITH NATIONAL MAP ACCURACY STANDARDS
FOR SALE BY U. S. GEOLOGICAL SURVEY, WASHINGTON 25, D. C.
AND KENTUCKY AGRICULTURAL AND INDUSTRIAL DEVELOPMENT BOARD, FRANKFORT, KENTUCKY
A FOLDER DESCRIBING TOPOGRAPHIC MAPS AND SYMBOLS IS AVAILABLE ON REQUEST