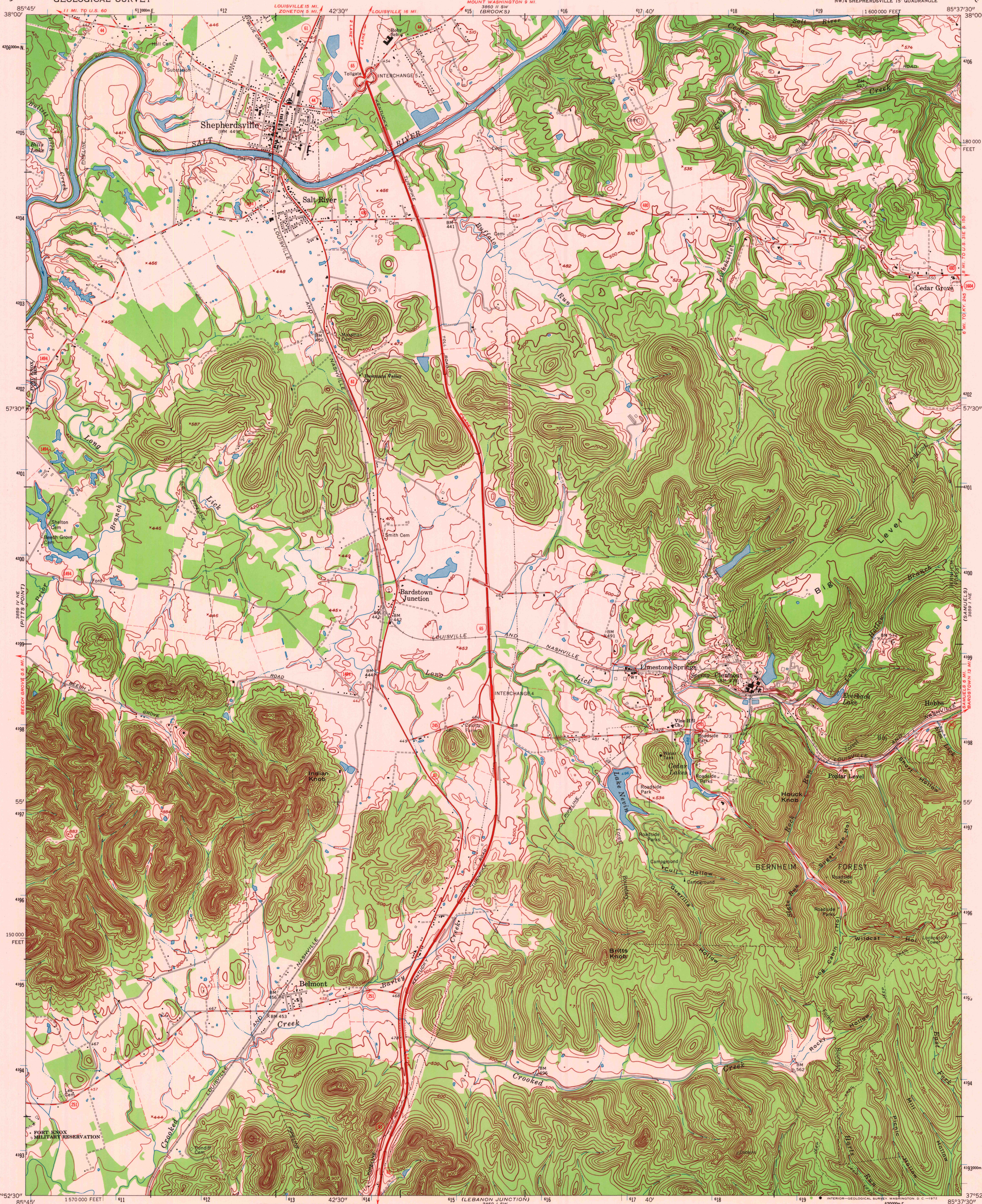
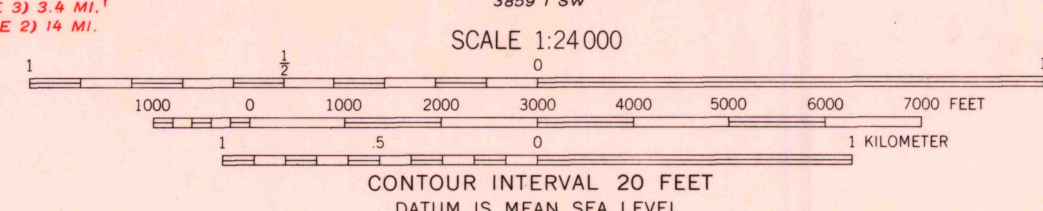
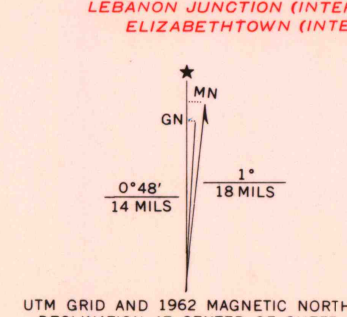


UNITED STATES
DEPARTMENT OF THE INTERIOR
GEOLOGICAL SURVEY

SHEPHERDSVILLE QUADRANGLE
KENTUCKY-BULLITT CO.
7.5 MINUTE SERIES (TOPOGRAPHIC)
NW/4 SHEPHERDSVILLE 15' QUADRANGLE



Mapped by the Army Map Service
Edited and published by the Geological Survey
Revised by the Geological Survey in cooperation
with Kentucky Geological Survey
Control by USGS and USC&GS
Topography by photogrammetric methods from aerial
photographs taken 1947. Field checked 1949. Revised 1962
Polyconic projection. 1927 North American datum
10,000-foot grid based on Kentucky coordinate system, north zone
1000-meter Universal Transverse Mercator grid ticks,
zone 16, shown in blue
Fine red dashed lines indicate selected fence and field lines where
generally visible on aerial photographs. This information is unchecked



THIS MAP COMPLIES WITH NATIONAL MAP ACCURACY STANDARDS
FOR SALE BY U. S. GEOLOGICAL SURVEY, WASHINGTON, D. C. 20242,
KENTUCKY GEOLOGICAL SURVEY, LEXINGTON, KENTUCKY 40506,
AND KENTUCKY DEPARTMENT OF COMMERCE, FRANKFORT, KENTUCKY 40601
A FOLDER DESCRIBING TOPOGRAPHIC MAPS AND SYMBOLS IS AVAILABLE ON REQUEST



ROAD CLASSIFICATION
Heavy-duty ——— Light-duty ———
Medium-duty ——— Unimproved dirt ———
Interstate Route ——— State Route ———

SHEPHERDSVILLE, KY.
NW/4 SHEPHERDSVILLE 15' QUADRANGLE
N3752.5-W8537.5/7.5
1962
AMS 3859 I NW-SERIES V853

USGS
HISTORICAL FILE
TOPOGRAPHIC DIVISION

APR 3 1972
4315