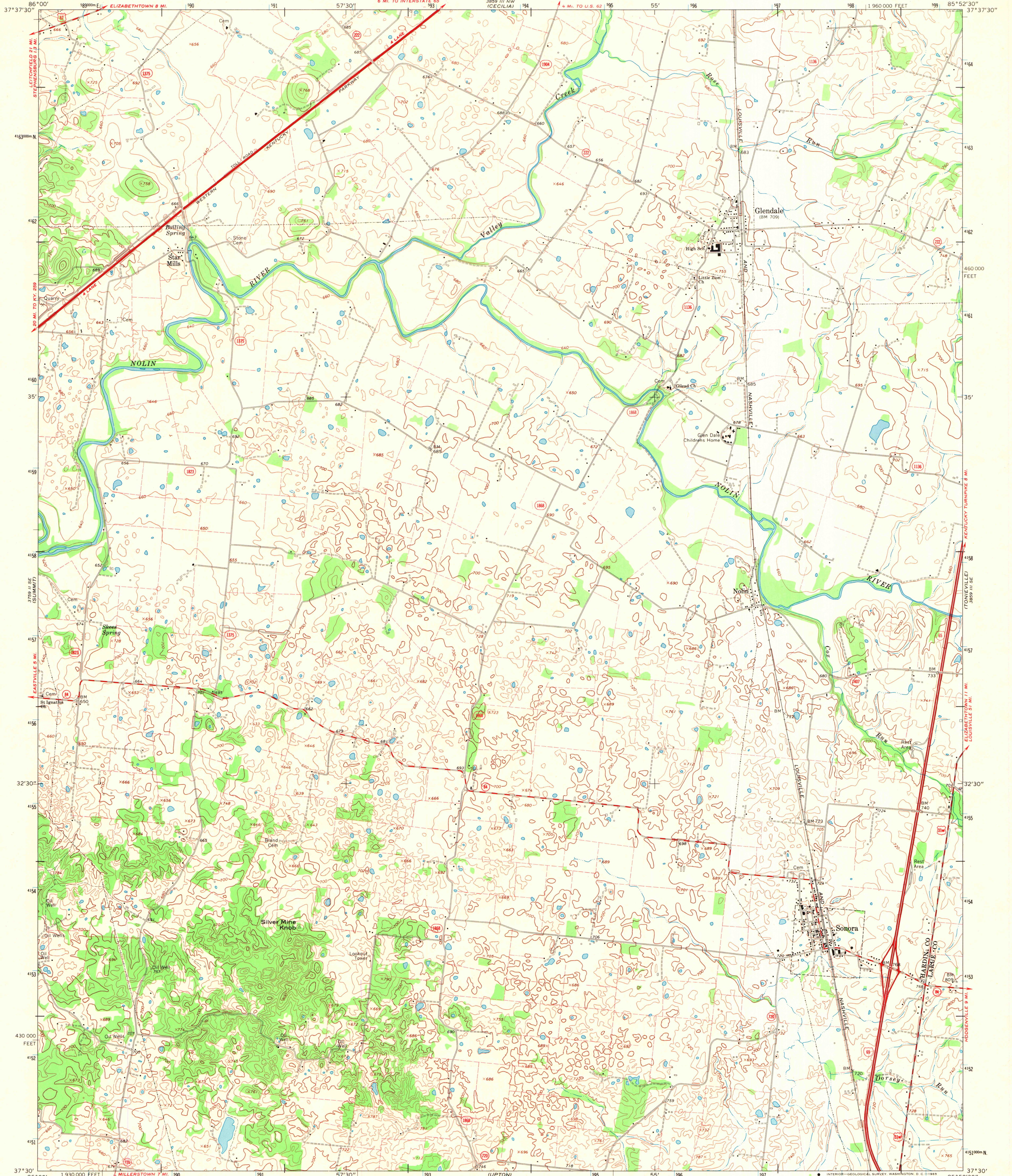
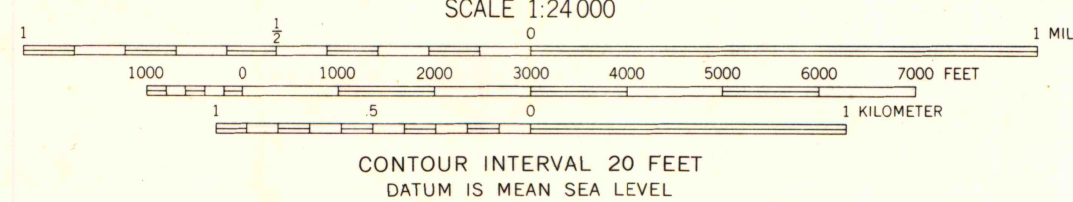
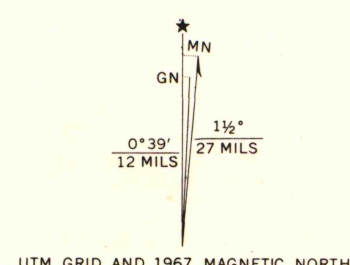


UNITED STATES
DEPARTMENT OF THE INTERIOR
GEOLOGICAL SURVEY

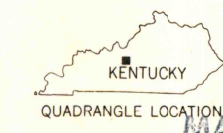
SONORA QUADRANGLE
KENTUCKY
7.5 MINUTE SERIES (TOPOGRAPHIC)
SW/4 ELIZABETHTOWN 15' QUADRANGLE



Mapped by the Army Map Service
Edited and published by the Geological Survey
Revised by the Geological Survey in cooperation
with State of Kentucky agencies
Control by USGS and USCGS
Topography by photogrammetric methods from aerial photographs
taken 1947. Field checked 1949. Revised from aerial
photographs taken 1967. Field checked 1967
Polyconic projection. 1927 North American datum
10,000-foot grid based on Kentucky coordinate system, south zone
1000-meter Universal Transverse Mercator grid ticks,
zone 16, shown in blue
Fine red dashed lines indicate selected fence and field lines where
generally visible on aerial photographs. This information is unchecked



THIS MAP COMPLIES WITH NATIONAL MAP ACCURACY STANDARDS
FOR SALE BY U.S. GEOLOGICAL SURVEY, WASHINGTON, D. C. 20242,
KENTUCKY GEOLOGICAL SURVEY, LEXINGTON, KENTUCKY 40506,
AND KENTUCKY DEPARTMENT OF COMMERCE, FRANKFORT, KENTUCKY 40601
A FOLDER DESCRIBING TOPOGRAPHIC MAPS AND SYMBOLS IS AVAILABLE ON REQUEST



ROAD CLASSIFICATION
Primary highway, all weather,
hard surface
Secondary highway, all weather,
hard surface
Unimproved road, fair or dry
weather
Interstate Route U.S. Route State Route

SONORA, KY.
SW/4 ELIZABETHTOWN 15' QUADRANGLE
N3730—W8552.5/7.5

SEP 17 1989

1967

AMS 3859 III SW—SERIES V853

University of Wisconsin