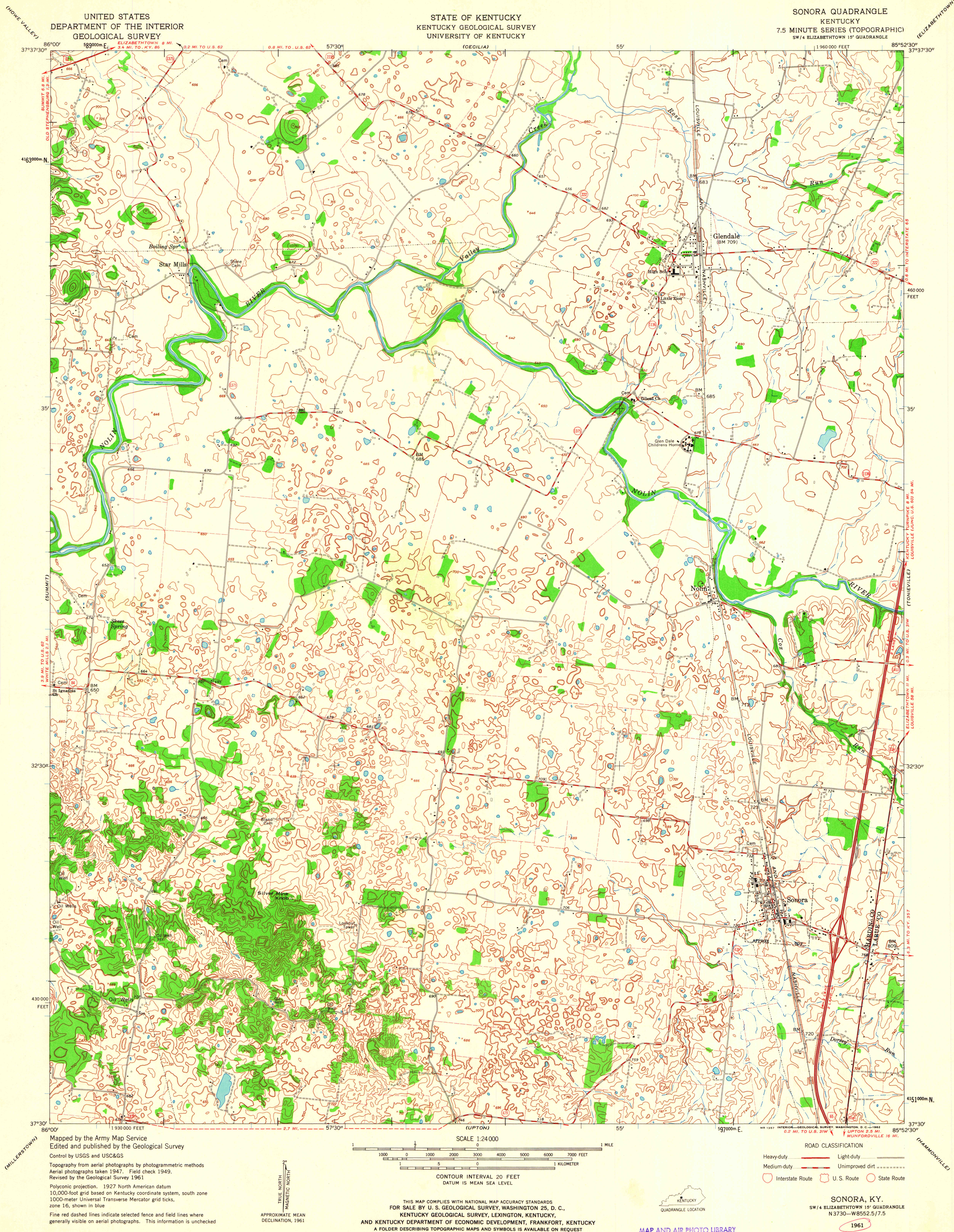


UNITED STATES
DEPARTMENT OF THE INTERIOR
GEOLOGICAL SURVEY

STATE OF KENTUCKY
KENTUCKY GEOLOGICAL SURVEY
UNIVERSITY OF KENTUCKY

SONORA QUADRANGLE
KENTUCKY
7.5 MINUTE SERIES (TOPOGRAPHIC)
SW 1/4 ELIZABETHTOWN 15' QUADRANGLE



Maped by the Army Map Service
Edited and published by the Geological Survey
Control by USGS and USC&GS
Topography from aerial photographs by photogrammetric methods
Aerial photographs taken 1947. Field check 1949.
Revised by the Geological Survey 1961
Polyconic projection. 1927 North American datum
10,000-foot grid based on Kentucky coordinate system, south zone
1000-meter Universal Transverse Mercator grid ticks,
zone 16, shown in blue
Fine red dashed lines indicate selected fence and field lines where
generally visible on aerial photographs. This information is unchecked

TRUE NORTH
MAGNETIC NORTH
APPROXIMATE MEAN
DECLINATION, 1961

SCALE 1:24000
1 0 1000 2000 3000 4000 5000 6000 7000 FEET
1 0 1 2 3 4 5 6 7 8 9 10 KILOMETER
CONTOUR INTERVAL 20 FEET
DATUM IS MEAN SEA LEVEL



ROAD CLASSIFICATION
Heavy-duty ——— Light-duty ———
Medium-duty ——— Unimproved dirt ———
○ Interstate Route ○ U.S. Route ○ State Route

SONORA, KY.
SW 1/4 ELIZABETHTOWN 15' QUADRANGLE
N 3730—W 8552.5/7.5
1961

THIS MAP COMPLIES WITH NATIONAL MAP ACCURACY STANDARDS
FOR SALE BY U. S. GEOLOGICAL SURVEY, WASHINGTON 25, D. C.,
KENTUCKY GEOLOGICAL SURVEY, LEXINGTON, KENTUCKY,
AND KENTUCKY DEPARTMENT OF ECONOMIC DEVELOPMENT, FRANKFORT, KENTUCKY
A FOLDER DESCRIBING TOPOGRAPHIC MAPS AND SYMBOLS IS AVAILABLE ON REQUEST

MAP AND AIR PHOTO LIBRARY
University of Wisconsin