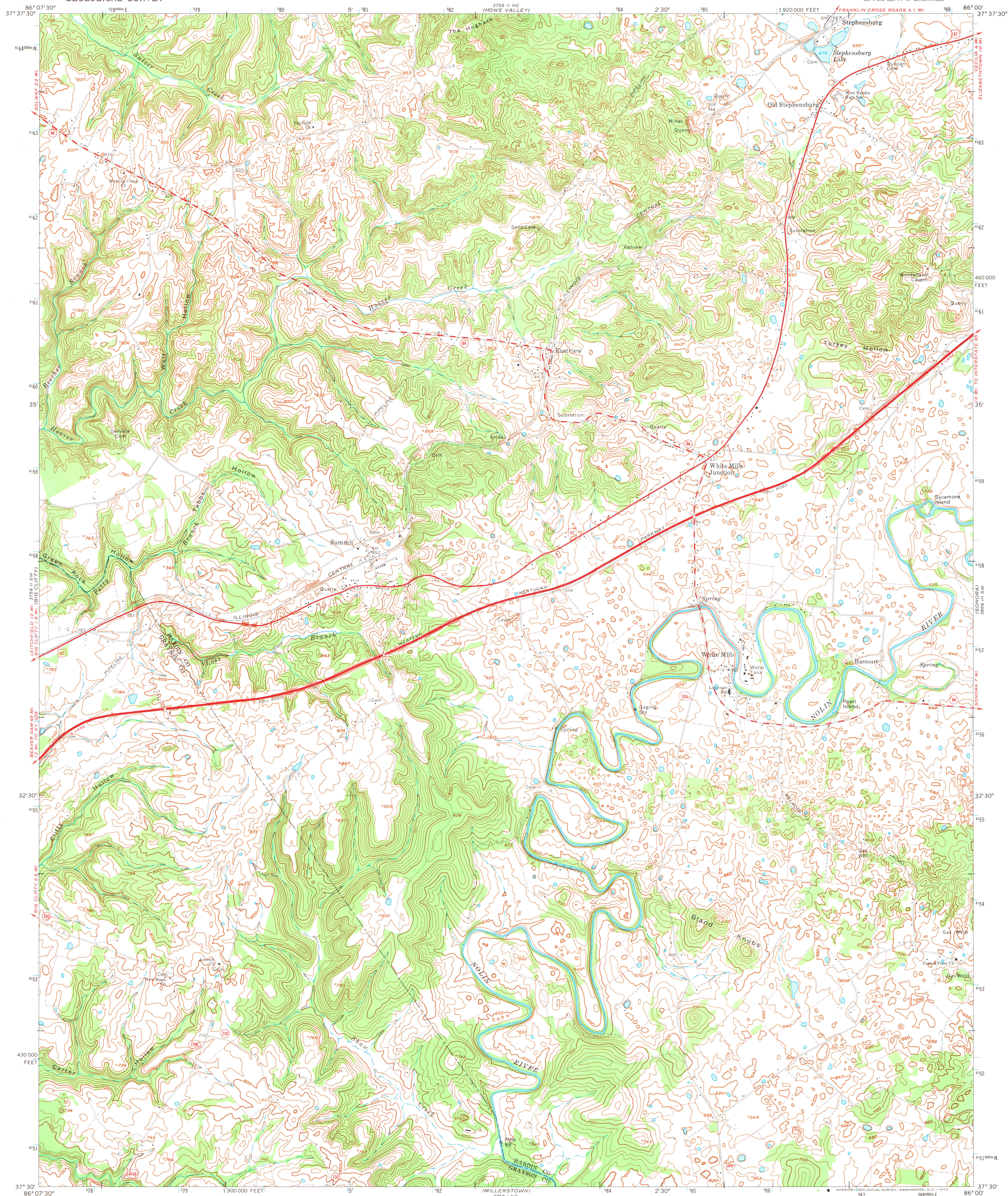


UNITED STATES
DEPARTMENT OF THE INTERIOR
GEOLOGICAL SURVEY

SUMMIT QUADRANGLE
KENTUCKY
7.5 MINUTE SERIES (TOPOGRAPHIC)
SE 1/4 BIG CLIFTY 15' QUADRANGLE

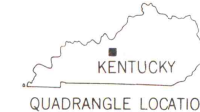


Mapped by the Army Map Service
Edited and published by the Geological Survey
Revised by the Geological Survey in cooperation
with Kentucky Geological Survey
Control by USGS and USC&GS
Topography by photogrammetric methods from aerial photographs
taken 1947. Field checked 1949. Revised from aerial photographs
taken 1972. Field checked 1972
Polyconic projection. 1927 North American datum
10,000-foot grid based on Kentucky coordinate system, south zone
1000-meter Universal Transverse Mercator grid ticks,
zone 16, shown in blue
Fine red dashed lines indicate selected fence and field lines where
generally visible on aerial photographs. This information is unchecked

UTM GRID AND 1973 MAGNETIC NORTH
DECLINATION AT CENTER OF SHEET

SCALE 1:24,000
CONTOUR INTERVAL 20 FEET
DATUM IS MEAN SEA LEVEL

THIS MAP COMPLIES WITH NATIONAL MAP ACCURACY STANDARDS
FOR SALE BY U.S. GEOLOGICAL SURVEY, WASHINGTON, D. C. 20242,
KENTUCKY GEOLOGICAL SURVEY, LEXINGTON, KENTUCKY 40506,
AND KENTUCKY DEPARTMENT OF COMMERCE, FRANKFORT, KENTUCKY 40601
A FOLDER DESCRIBING TOPOGRAPHIC MAPS AND SYMBOLS IS AVAILABLE ON REQUEST



MAP AND AIR PHOTO
LIBRARY

FEB 5 1974

University of Wisconsin

SUMMIT, KY.
SE 1/4 BIG CLIFTY 15' QUADRANGLE
N3730-W8600/7.5

1972

AMS 3759 II SE-SERIES W853