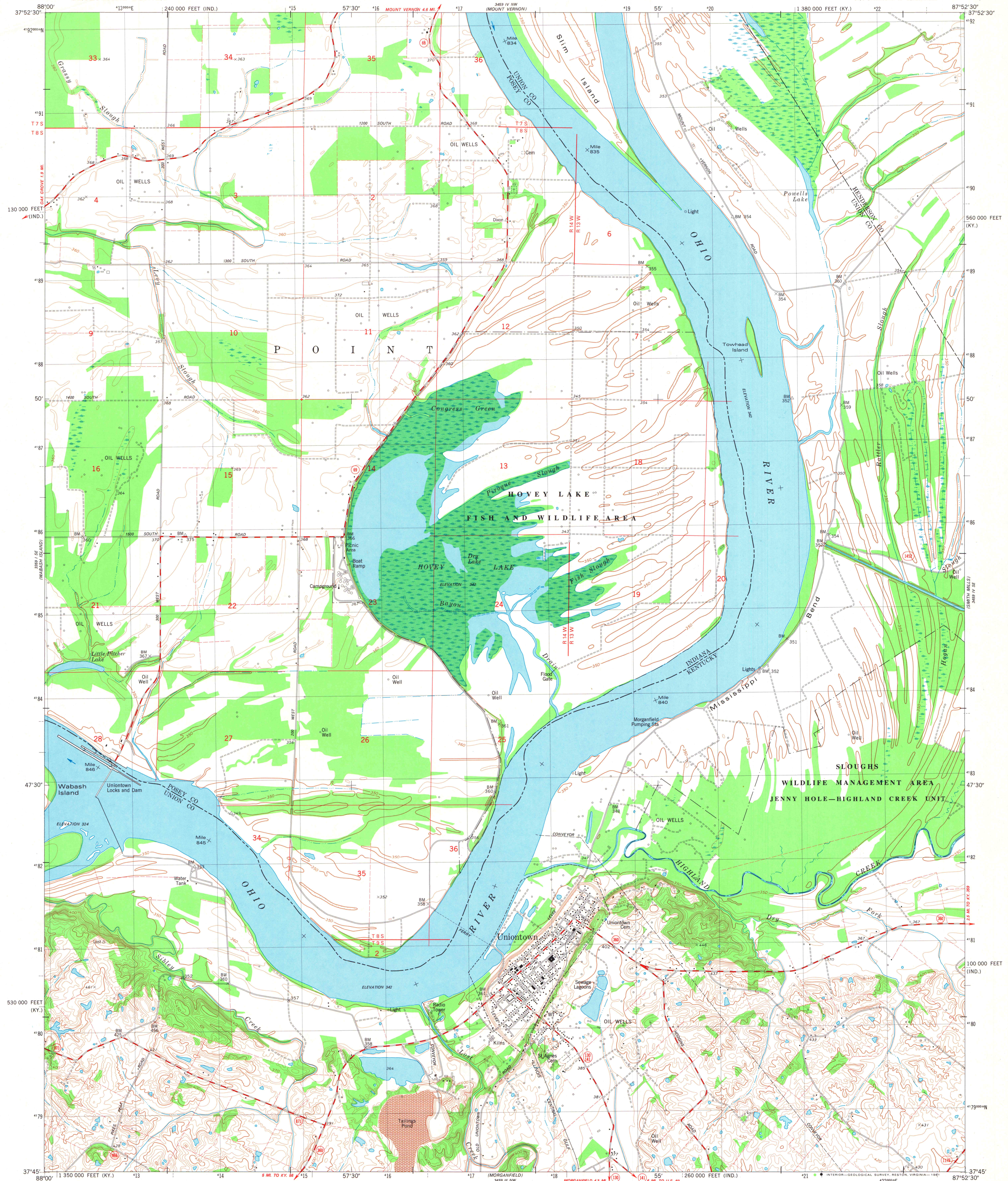
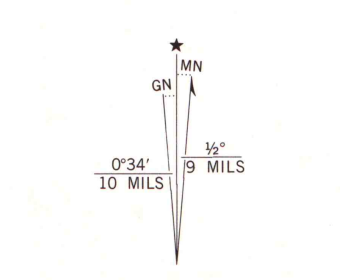


UNITED STATES  
DEPARTMENT OF THE INTERIOR  
GEOLOGICAL SURVEY

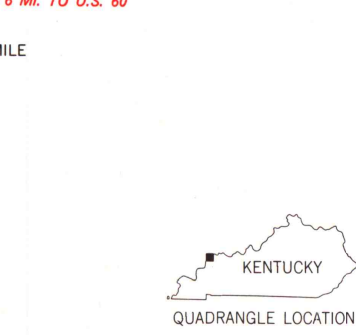
UNIONTOWN QUADRANGLE  
KENTUCKY-INDIANA  
7.5 MINUTE SERIES (TOPOGRAPHIC)  
SW/4 UNIONTOWN 15' QUADRANGLE



Mapped, edited, and published by the Geological Survey in cooperation with Kentucky Geological Survey and Indiana Department of Natural Resources. Control by USGS, NOS/NOAA, and USCE. Culture and drainage, in Kentucky, in part compiled from aerial photographs taken 1950. Topography by planetable surveys 1952. Culture and drainage, in Indiana, from controlled photostereos from aerial photographs taken 1956. Topography by planetable surveys 1958. Revised from aerial photographs taken 1974 and 1977. Field checked 1976. Map edited 1981. Polyconic projection. 10,000-foot grid ticks based on Kentucky coordinate system, south zone, and Indiana coordinate system, west zone. 1000-meter Universal Transverse Mercator grid, zone 16. 1927 North American Datum. To place on the predicted North American Datum 1983 move the projection lines 3 meters south and 3 meters east as shown by dashed corner ticks. Fine red dashed lines indicate sectioned fence and field lines where visible on aerial photographs. This information is unchecked. The state boundary as shown represents the approximate position of the low waterline as determined from U. S. Corps of Engineers, Ohio River charts, surveyed 1912, 1913, and supplementary information. There may be private inholdings within the boundaries of the National or State reservations shown on this map.



SCALE 1:24 000  
CONTOUR INTERVAL 10 FEET  
NATIONAL GEODETIC VERTICAL DATUM OF 1929



ROAD CLASSIFICATION  
Primary highway, hard surface  
Secondary highway, hard surface  
Unimproved road  
Interstate Route  
U. S. Route  
State Route

MAP AND AIR PHOTO LIBRARY  
MAR 5 - 1982  
UNIONTOWN, KY.-IND.  
SW/4 UNIONTOWN 15' QUADRANGLE  
N3745-W8752.5/7.5  
1981  
DMA 3459 IV SW-SERIES V853

THIS MAP COMPLIES WITH NATIONAL MAP ACCURACY STANDARDS  
FOR SALE BY U. S. GEOLOGICAL SURVEY, RESTON, VIRGINIA 22092,  
KENTUCKY GEOLOGICAL SURVEY, LEXINGTON, KENTUCKY 40506,  
KENTUCKY DEPARTMENT OF COMMERCE, FRANKFORT, KENTUCKY 40601,  
AND INDIANA DEPARTMENT OF NATURAL RESOURCES, INDIANAPOLIS, INDIANA 46204  
A FOLDER DESCRIBING TOPOGRAPHIC MAPS AND SYMBOLS IS AVAILABLE ON REQUEST