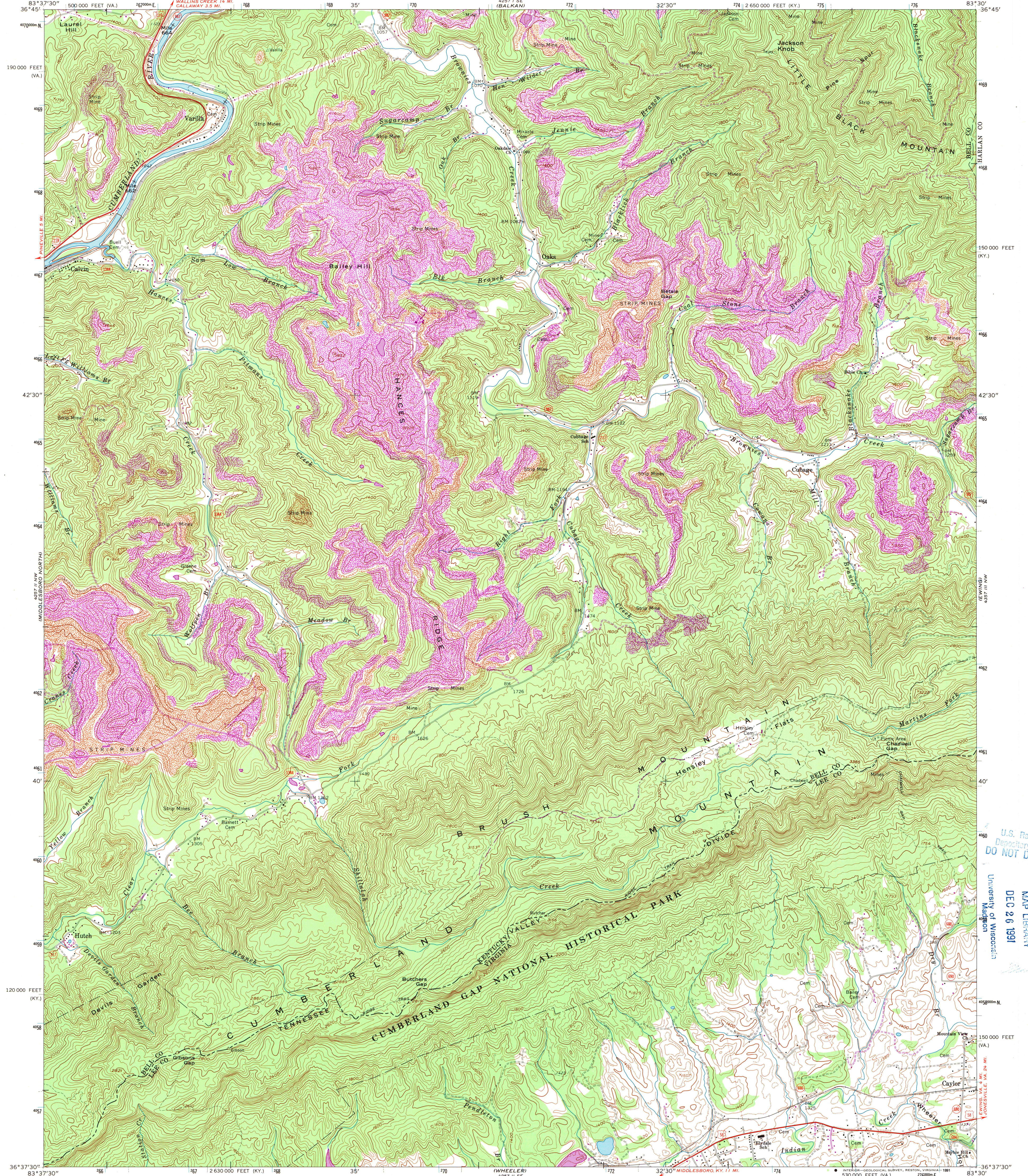


UNITED STATES
DEPARTMENT OF THE INTERIOR
GEOLOGICAL SURVEY

STATE OF KENTUCKY
KENTUCKY GEOLOGICAL SURVEY
UNIVERSITY OF KENTUCKY

VARILLA QUADRANGLE
KENTUCKY-VIRGINIA
7.5 MINUTE SERIES (TOPOGRAPHIC)
NE/4 MIDDLESBORO 15' QUADRANGLE



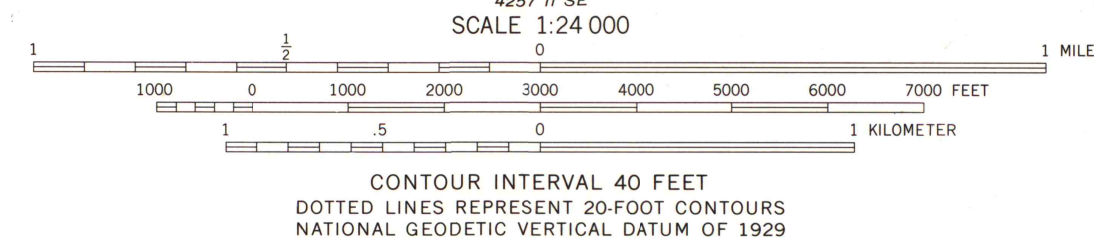
Mapped, edited, and published by the Geological Survey
Control by USGS and NOS/NOAA

Topography by photogrammetric methods from aerial photographs
taken 1952. Field checked 1954. Revised from aerial
photographs taken 1973. Field checked 1974

Polyconic projection. 1927 North American datum
10,000-foot grids based on Kentucky coordinate system,
south zone, and Virginia coordinate system, south zone
1000-meter Universal Transverse Mercator grid ticks,
zone 17, shown in blue
To place on the predicted North American Datum 1983
move the projection lines 6 meters south and 9 meters west
as shown by dashed corner ticks

Fine red dashed lines indicate selected fence and field lines where
generally visible on aerial photographs. This information is unchecked

There may be private inholdings within the boundaries of
the National or State reservations shown on this map



THIS MAP COMPLIES WITH NATIONAL MAP ACCURACY STANDARDS
FOR SALE BY U. S. GEOLOGICAL SURVEY, DENVER, COLORADO 80225 OR RESTON, VIRGINIA 22092
KENTUCKY GEOLOGICAL SURVEY LEXINGTON, KENTUCKY 40506
KENTUCKY DEPARTMENT OF COMMERCE, FRANKFORT, KENTUCKY 40601
AND VIRGINIA DIVISION OF MINERAL RESOURCES, CHARLOTTESVILLE, VIRGINIA 22903
A FOLDER DESCRIBING TOPOGRAPHIC MAPS AND SYMBOLS IS AVAILABLE ON REQUEST



Revisions shown in purple and woodland compiled in
cooperation with Commonwealth of Virginia agencies
from aerial photographs taken 1989 and other sources
This information not field checked. Map edited 1991

ROAD CLASSIFICATION
Primary highway, hard surface ——— Light-duty road, hard or improved surface ———
Secondary highway, hard surface ——— Unimproved road ———
Interstate Route ——— U. S. Route ——— State Route ———

VARILLA, KY. - VA.
NE/4 MIDDLESBORO 15' QUADRANGLE
36083-F5-1F-024

1974
PHOTOREVISED 1991
DMA 4257 II NE-SERIES V853

U.S. Regional
Depository Copy
DO NOT DISCARD

A.H. ROBINSON
MAP LIBRARY
DEC 26 1991
University of Wisconsin
Madison