

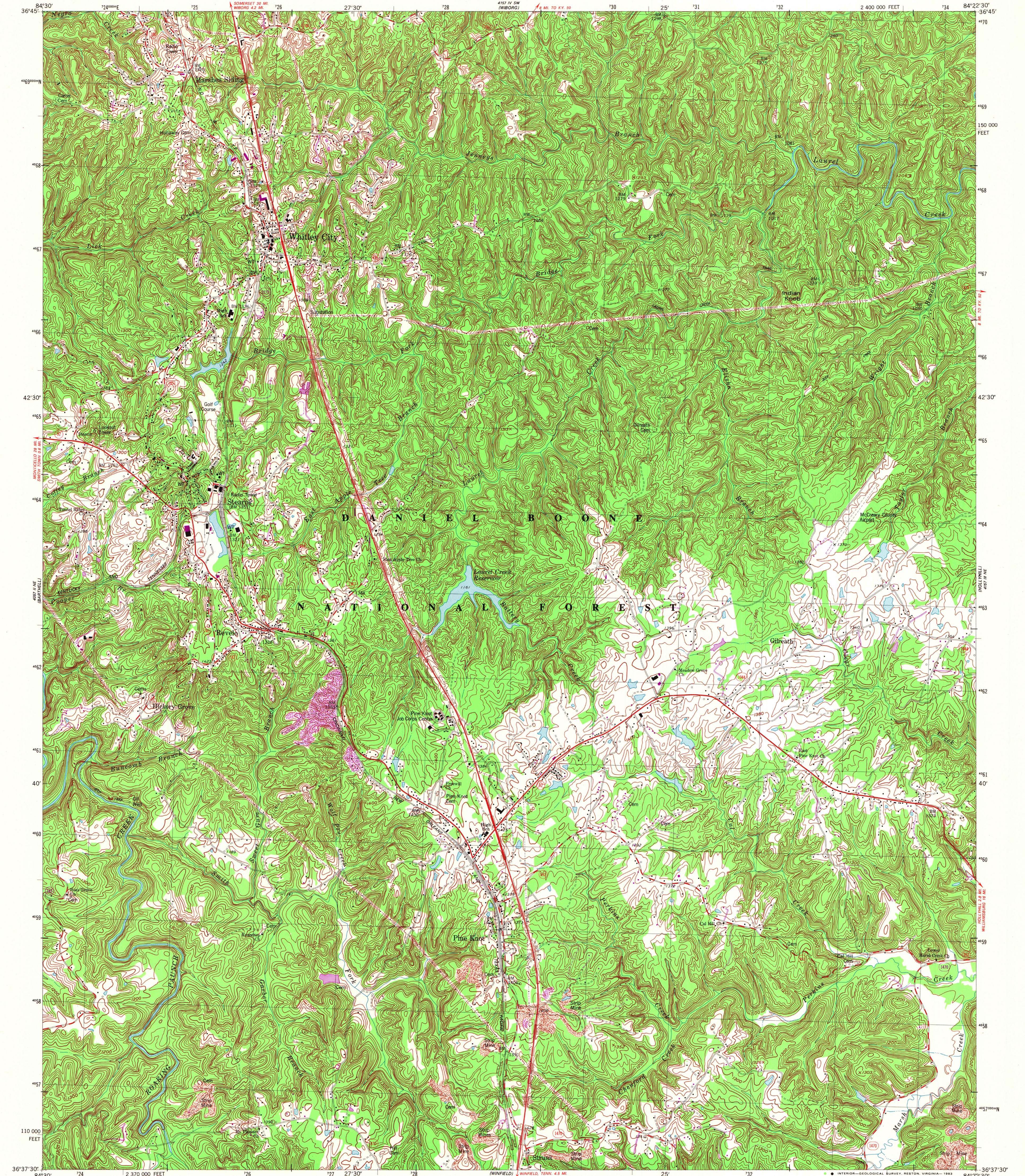
36°45' 84°30'

UNITED STATES
DEPARTMENT OF THE INTERIOR
GEOLOGICAL SURVEY

STATE OF KENTUCKY
KENTUCKY GEOLOGICAL SURVEY
UNIVERSITY OF KENTUCKY

WHITLEY CITY QUADRANGLE
KENTUCKY-MC CREARY CO.
7.5 MINUTE SERIES (TOPOGRAPHIC)
NW/4 STEARNS 15' QUADRANGLE

45° 16' 45" (CUMBERLAND FALLS)



Mapped, edited, and published by the Geological Survey
Control by USGS and NOS/NOAA
Topography by photogrammetric methods from aerial photographs taken 1951. Field checked 1952. Revised from aerial photographs taken 1975. Field checked 1977. Map edited 1979
Polyconic projection. 10,000-foot grid ticks based on Kentucky coordinate system, south zone. 1000-meter Universal Transverse Mercator grid, zone 16. 1927 North American Datum. To place on the predicted North American Datum 1983 move the projection lines 6 meters south and 6 meters west as shown by dashed corner ticks
There may be private inholdings within the boundaries of the National or State reservations shown on this map
Dashed contours in strip mine areas not revised

Revisions shown in purple and woodland compiled in cooperation with State of Kentucky agencies from aerial photographs taken 1981 and other sources
Contours adjusted adjacent to certain photorevised hydrographic features. This information not field checked. Map edited 1982

SCALE 1:24 000
CONTOUR INTERVAL 20 FEET
NATIONAL GEODETIC VERTICAL DATUM OF 1929
THIS MAP COMPLIES WITH NATIONAL MAP ACCURACY STANDARDS FOR SALE BY U.S. GEOLOGICAL SURVEY, RESTON, VIRGINIA 22092, KENTUCKY GEOLOGICAL SURVEY, LEXINGTON, KENTUCKY 40506, AND KENTUCKY DEPARTMENT OF COMMERCE, FRANKFORT, KENTUCKY 40601
A FOLDER DESCRIBING TOPOGRAPHIC MAPS AND SYMBOLS IS AVAILABLE ON REQUEST

ROAD CLASSIFICATION
Primary highway, hard surface
Secondary highway, hard surface
Light-duty road, hard or improved surface
Unimproved road
Interstate Route
U.S. Route
State Route
WHITLEY CITY, KY.
NW/4 STEARNS 15' QUADRANGLE
N3637.5-W8422.5/7.5
1979
PHOTOREVISED 1982
DMA 4157 III NW-SERIES V853
A.H. ROBINSON
MAP LIBRARY
JUL 26 1983
University of Wisconsin
Madison