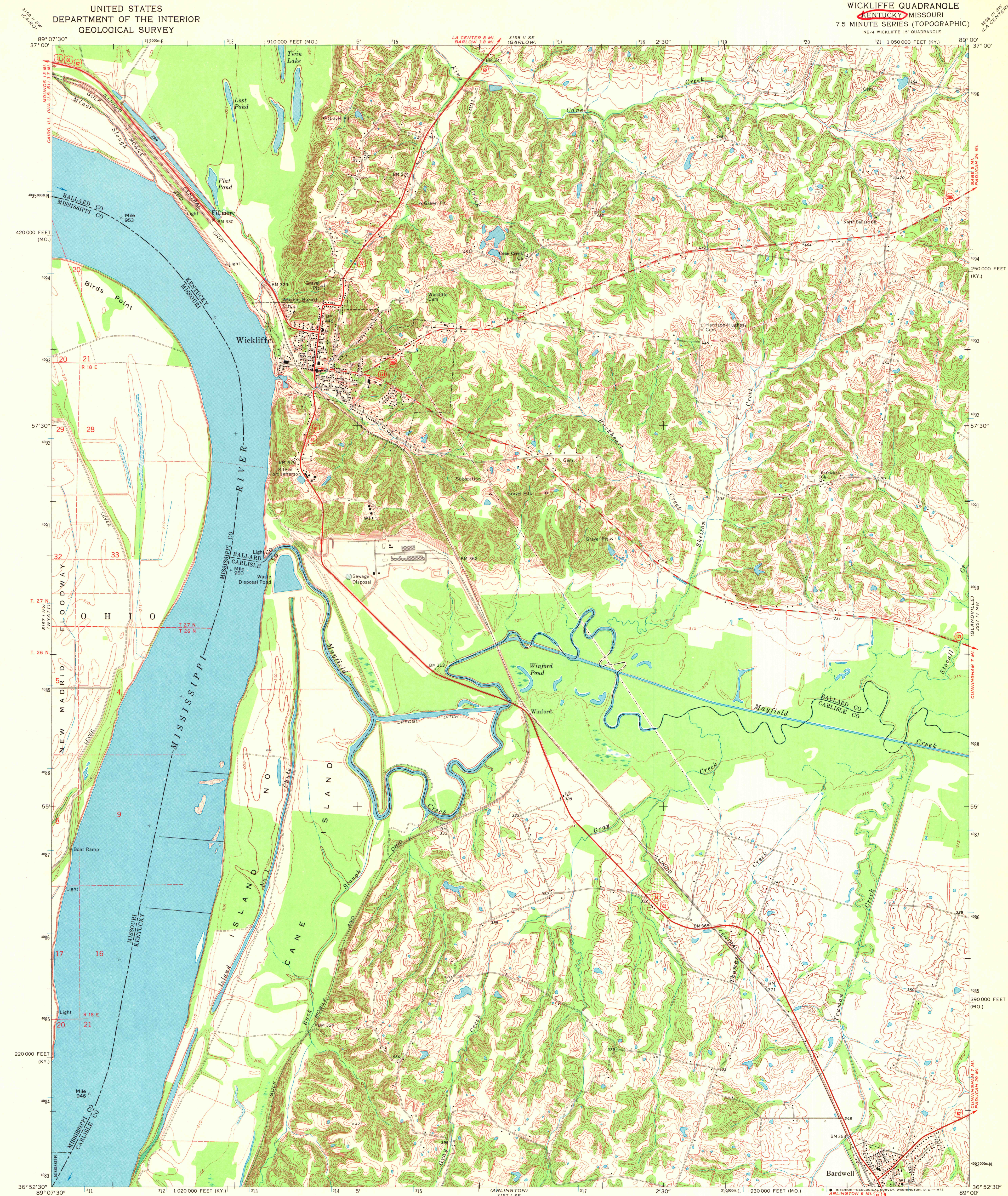


UNITED STATES
DEPARTMENT OF THE INTERIOR
GEOLOGICAL SURVEY

WICKLIFFE QUADRANGLE
KENTUCKY MISSOURI
7.5 MINUTE SERIES (TOPOGRAPHIC)



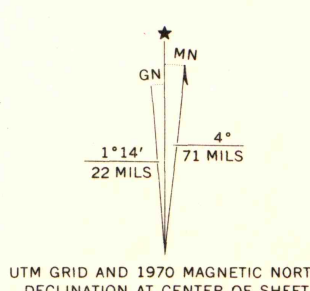
Mapped, edited, and published by the Geological Survey
in cooperation with the State of Kentucky

Control by USGS and USC&GS

Planimetry by photogrammetric methods from aerial photographs
taken 1950. Topography by planimetric surveys 1951. Revised
from aerial photographs taken 1969. Field checked 1970

Polyconic projection. 1927 North American datum
10,000-foot grids based on Kentucky coordinate system, south zone
and Missouri coordinate system, east zone
1000-meter Universal Transverse Mercator grid ticks,
zone 16, shown in blue

Fine red dashed lines indicate selected fence and field lines where
generally visible on aerial photographs. This information is unchecked



SCALE 1:24,000
0 1000 2000 3000 4000 5000 6000 7000 FEET
0 1 2 3 4 5 KILOMETER

CONTOUR INTERVAL 10 FEET
DOTTED LINES REPRESENT 5-FOOT CONTOURS
DATUM IS MEAN SEA LEVEL

THIS MAP COMPLIES WITH NATIONAL MAP ACCURACY STANDARDS
FOR SALE BY U. S. GEOLOGICAL SURVEY, DENVER, COLORADO 80225, OR WASHINGTON, D. C. 20242,
KENTUCKY GEOLOGICAL SURVEY, LEXINGTON, KENTUCKY 40506,
KENTUCKY DEPARTMENT OF COMMERCE, FRANKFORT, KENTUCKY 40601,
AND MISSOURI GEOLOGICAL SURVEY, ROLLA, MISSOURI 65401
A FOLDER DESCRIBING TOPOGRAPHIC MAPS AND SYMBOLS IS AVAILABLE ON REQUEST

ROAD CLASSIFICATION
Primary highway, all weather, hard surface
Secondary highway, all weather, hard surface
Light-duty road, all weather, improved surface
Unimproved road, fair or dry weather
U. S. Route
State Route

MAP AND AIR PHOTO
LIBRARY

MAY 23 1972

WICKLIFFE, KY-MO.
NE 1/4 WICKLIFFE 15' QUADRANGLE
N 3652.5-W 8900.7.5

1970

AMS 3157 1 NE-SERIES V853