

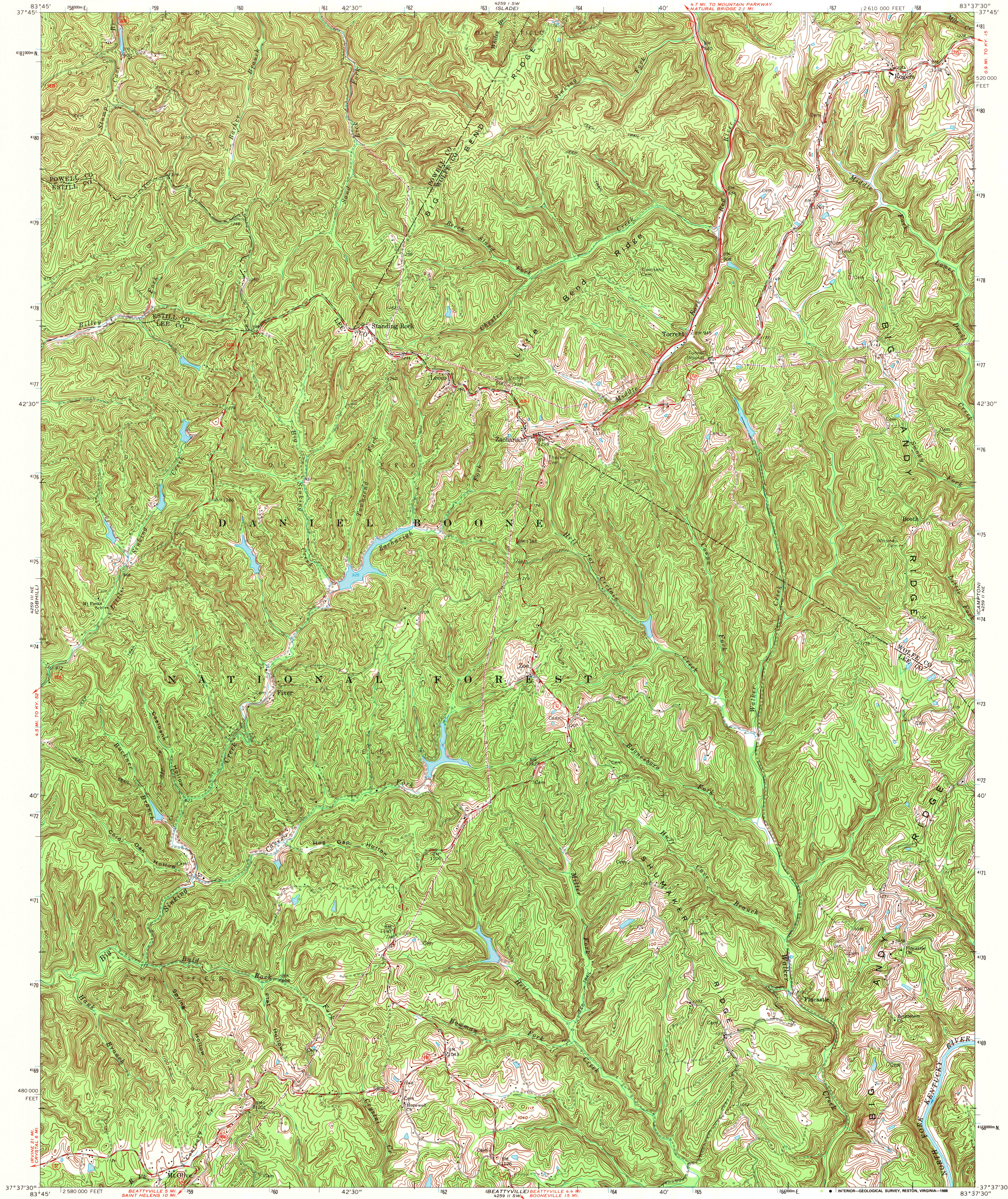
6259 1/4 SE
(ANTON)

UNITED STATES
DEPARTMENT OF THE INTERIOR
GEOLOGICAL SURVEY

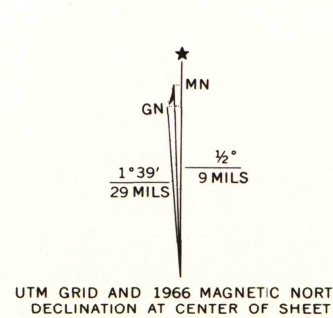
STATE OF KENTUCKY
KENTUCKY GEOLOGICAL SURVEY
UNIVERSITY OF KENTUCKY

ZACHARIAH QUADRANGLE
KENTUCKY
7.5 MINUTE SERIES (TOPOGRAPHIC)
NW 1/4 BEATTYVILLE 15' QUADRANGLE

6259 1/4 SE
(POMEROYTON)



Maped, edited, and published by the Geological Survey
Control by USGS and USC&GS
Topography by photogrammetric methods from aerial photographs
taken 1950 and 1952. Field checked 1953. Revised 1966
Polyconic projection. 1927 North American datum
10,000-foot grid based on Kentucky coordinate system, south zone
1000-meter Universal Transverse Mercator grid ticks, zone 17,
shown in blue
Only selected wells shown in oil fields. Numerous wells omitted
To place on the predicted North American Datum 1983,
move the projection lines 5 meters south and
8 meters west as shown by dashed corner ticks



THIS MAP COMPLIES WITH NATIONAL MAP ACCURACY STANDARDS
FOR SALE BY U.S. GEOLOGICAL SURVEY, DENVER, COLORADO 80225, OR RESTON, VIRGINIA 22092
KENTUCKY GEOLOGICAL SURVEY, LEXINGTON, KENTUCKY 40506
AND KENTUCKY DEPARTMENT OF COMMERCE, FRANKFORT, KENTUCKY 40601
A FOLDER DESCRIBING TOPOGRAPHIC MAPS AND SYMBOLS IS AVAILABLE ON REQUEST



ROAD CLASSIFICATION
Heavy-duty ——— Light-duty ———
Medium-duty ——— Unimproved dirt ———
○ State Route

ZACHARIAH, KY.
NW 1/4 BEATTYVILLE 15' QUADRANGLE
37083-F6-TF-024

1966
DMA 4259 II NW—SERIES V853

U.S. Regional
Depository Copy
DO NOT DISCARD
A.H. ROBINSON
MAP LIBRARY
DEC 22 1988
University of Wisconsin
Madison