

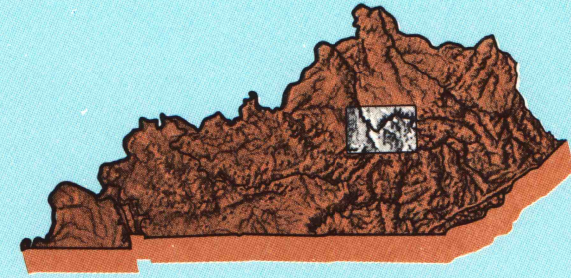
HARRODSBURG, KENTUCKY

30 X 60 MINUTE SERIES (TOPOGRAPHIC)

37084-E1-TM-100

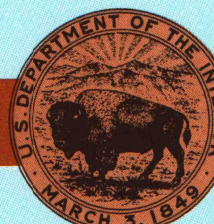
Harrodsburg
KENTUCKY

1:100 000-scale metric
topographic map



30 X 60 MINUTE QUADRANGLE
SHOWING

- Contours and elevations in meters
- Highways, roads and other manmade structures
- Water features
- Woodland areas
- Geographic names



GEOLOGICAL SURVEY

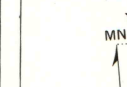
1991

Produced by the United States Geological Survey
Compiled from USGS 1:24 000-scale topographic maps
dated 1952-1979. Planimetry revised from aerial
photographs taken 1983 and 1985 and other source data.
Revised information not field checked.
Map edited 1991.

Projection and 10 000-meter grid, zone 16
Universal Transverse Mercator
25 000-foot grid ticks based on Kentucky coordinate
system, south and north zones. 1927 North American Datum.
To place on the predicted North American Datum 1983 move
the projection lines 5 meters south and 6 meters west.
There may be private inholdings within the boundaries of
the National or State reservations shown on this map.

CONTOUR INTERVAL 20 METERS
NATIONAL GEODETIC VERTICAL DATUM OF 1929
ELEVATIONS SHOWN TO THE NEAREST METER

THIS MAP COMPLIES WITH NATIONAL MAP ACCURACY STANDARDS

CONVERSION TABLE		DECLINATION DIAGRAM	ADJOINING MAPS			
Meters	Feet		1	2	3	
1	3.2808					
2	6.5617					
3	9.8425					
4	13.1234					
5	16.4042					
6	19.6850					
7	22.9659					
8	26.2467					
9	29.5275					
10	32.8084					
To convert meters to feet multiply by 3.2808		UTM grid convergence (GM) and 1983 magnetic declination (MD) at center of map Diagram is approximate				
To convert feet to meters multiply by 0.3048						

1	2	3
4	5	
6	7	8

1	Lounville
2	Lesington
3	Morehead
4	Elizabethtown
5	Irvine
6	Campbellville
7	Somerset
8	Hazard

FOR SALE BY U.S. GEOLOGICAL SURVEY
DENVER, COLORADO 80225, OR RESTON, VIRGINIA 22092

Topographic Map Symbols

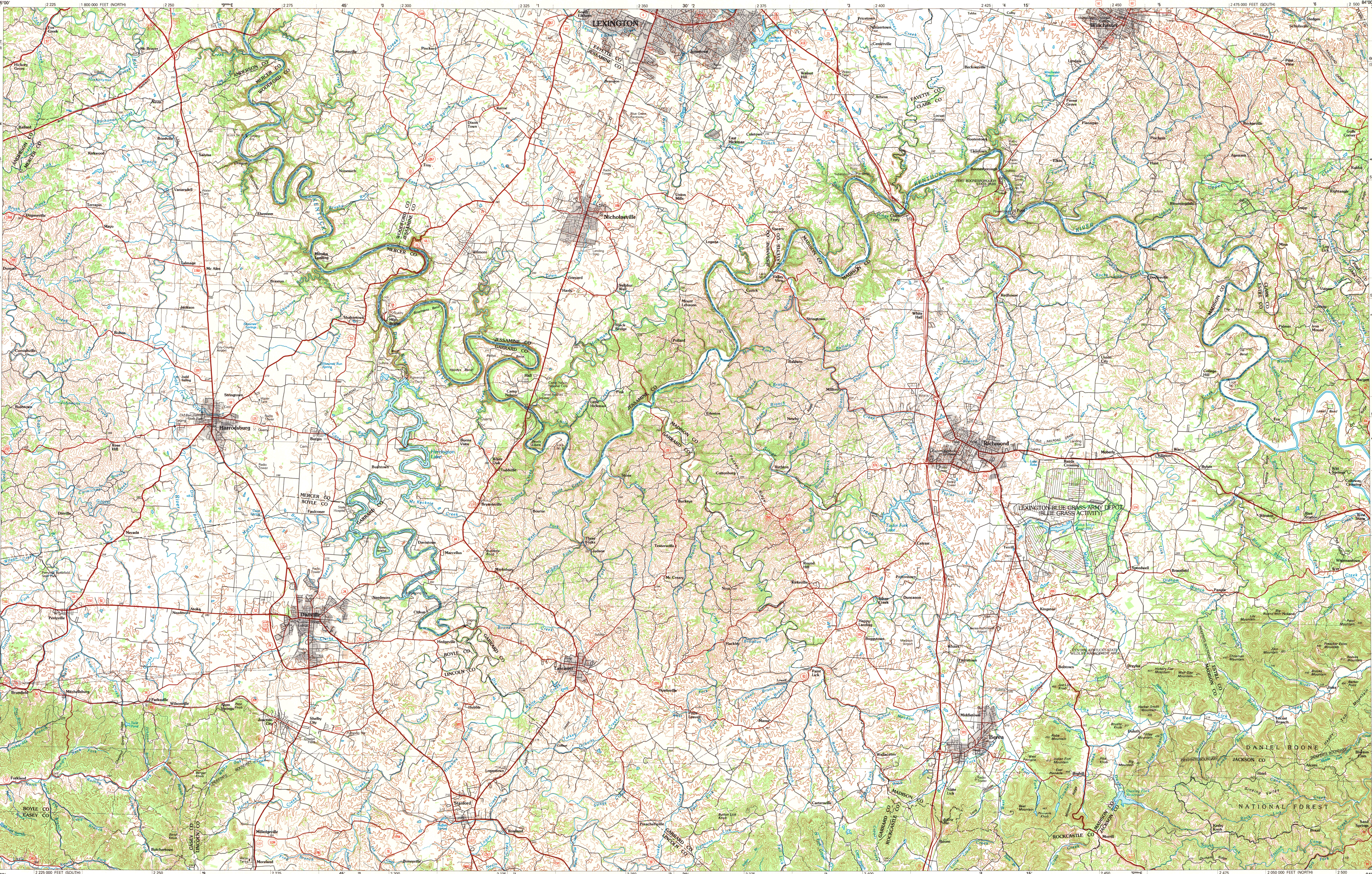
Primary highway, hard surface	
Secondary highway, hard surface	
Light duty road, principal street, hard or improved surface	
Other road or street, trail	
Route marker: interstate, U. S. State	
Railroad: standard gauge, narrow gauge	
Bridge: overpass; underpass	
Tunnel: road; railroad	
Built up area; locality; elevation	
Airport; landing field; landing strip	
National boundary	
State boundary	
County boundary	
National or State reservation boundary	
Land grant boundary	
U. S. public lands survey; range, township, section	
Range, township; section line; protected	
Power transmission line; pipeline	
Dam; dam with lock	
Cemetery; building	
Wetland; water well; spring	
Mine shaft; pit or cave; mine, quarry; gravel pit	
Campground; picnic area; U. S. location monument	
Ruin; cliff dwelling	
Distorted surface: strip mine, lava, sand	
Contours: index, intermediate, supplementary	
Bathymetric contours: index, intermediate	
Stream, lake; perennial; intermittent	
Rapid, large and small; falls, large and small	
Area to be submerged; marsh, swamp	
Land subject to controlled inundation; woodland	
Sandy, mangrove	
Orchard; vineyard	

U.S. Regional
Depository Copy
DO NOT DISCARD
ARTHUR H. ROBINSON MAP LIBRARY
University of Wisconsin-Madison

A simplified describing topographic maps is available on request

3006-9/8.00
SET

1991



SCALE 1:100 000
1 CENTIMETER ON THE MAP REPRESENTS 1 KILOMETER ON THE GROUND
CONTOUR INTERVAL 20 METERS

ARTHUR H. ROBINSON MAP LIBRARY
University of Wisconsin-Madison

HARRODSBURG, KENTUCKY
37084-E1-TM-100