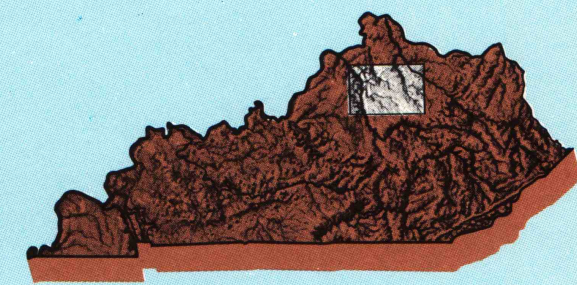


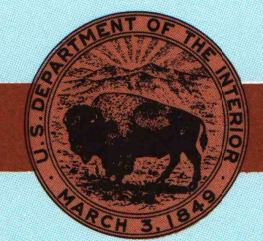
Lexington KENTUCKY

1:100 000-scale
planimetric map



30 X 60 MINUTE QUADRANGLE
SHOWING

- Elevations in meters
- Highways, roads and other manmade structures
- Water features
- Woodland areas
- Geographic names



GEOLOGICAL SURVEY

1986

Produced by the United States Geological Survey
Compiled from USGS 1:24 000-scale topographic maps dated 1952-1978. Planimetry revised from aerial photographs taken 1963 and other source data.
Map edited 1986

Projection and 10 000-meter grid, zone 16
Universal Transverse Mercator
25 000-foot grid ticks based on Kentucky coordinate system, north zone. 1927 North American Datum
To place on the predicted North American Datum 1983 move the projection lines 4 meters south and 6 meters west
There may be private inholdings within the boundaries of the National or State reservations shown on this map

NATIONAL GEODETIC VERTICAL DATUM OF 1929
ELEVATIONS SHOWN TO THE NEAREST METER

THIS MAP COMPLIES WITH NATIONAL MAP ACCURACY STANDARDS

CONVERSION TABLE		DECLINATION DIAGRAM	ADJOINING MAPS		
Meters	Feet		1	2	3
1	3.2808		1	2	3
2	6.5617		4	5	
3	9.8425		6	7	8
4	13.1234				
5	16.4042				
6	19.6850				
7	22.9659				
8	26.2467				
9	29.5275				
10	32.8084				
To convert meters to feet multiply by 3.2808		UTM grid convergence (EM) and 1983 magnetic declination (MD) at center of map. Diagram is approximate.			
To convert feet to meters multiply by 0.3048					

FOR SALE BY U.S. GEOLOGICAL SURVEY, DENVER, COLORADO 80225
OR RESTON, VIRGINIA 22092

U.S. Regional
Depository Copy
DO NOT DISCARD

Topographic Map Symbols

Primary highway, hard surface	
Secondary highway, hard surface	
Light duty road, principal street, hard or improved surface	
Other road or street, road	
Route marker: Interstate; U.S. State	
Railroad: standard gauge; narrow gauge	
Bridge: overpass; underpass	
Tunnel: road; railroad	
Built-up area: building, elevation	
Airport: landing field; landing strip	
National boundary	
County boundary	
National or State reservation boundary	
Land grant boundary	
U.S. public lands survey: range, township; section	
Range, township; section line: protected	
Power transmission line: pipeline	
Dam; dam with lock	
Cemetery; building	
Windmill; water well; spring	
Mine shaft; adit or cave; mine, quarry; gravel pit	
Campground; picnic area; U.S. location monument	
Railroad: old, abandoned	
Dissected surface; strip mine, levee, road	
Contours: index; intermediate; supplementary	
Bathymetric contours: index; intermediate	
Stream, lake; perennial; intermittent	
Recessed, large and small; lake, large and small	
Area to be submerged; marsh, swamp	
Land subject to controlled inundation; woodland	
Scrub; mangrove	
Orchard; vineyard	

LEXINGTON, KENTUCKY
38084-A1-PL-100

ARTHUR H. ROBINSON, MAP DESIGNER
University of Wisconsin-Madison

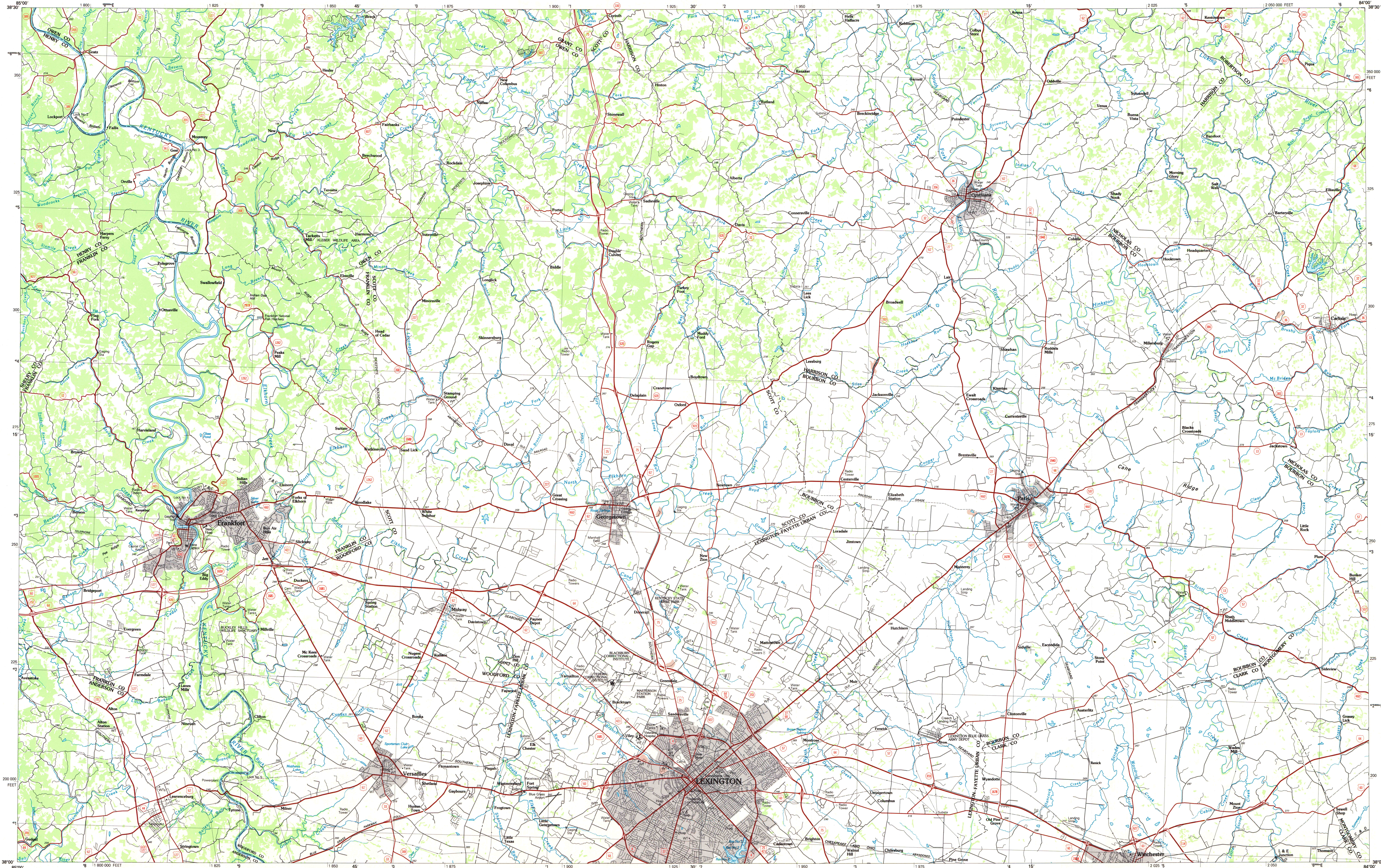
OCT - 2 1986

SET

1986

LEXINGTON, KENTUCKY

30 X 60 MINUTE SERIES (PLANIMETRIC)



SCALE 1:100 000
KILOMETERS 1 0 1 2 3 4 5 6 7 8 9 10 11 12 13 14 15 16 17 18 19 20
CENTIMETER ON THE MAP REPRESENTS 1 KILOMETER ON THE GROUND

SCALE 1:100 000
1000 0 5000 10000 15000 20000 30000 40000 50000 60000 70000 FEET

INTERIOR-GEOLOGICAL SURVEY, RESTON, VIRGINIA 22092