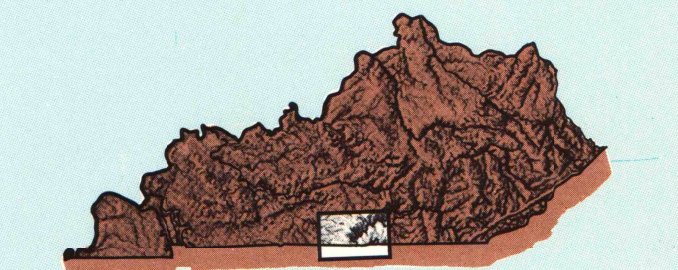


Tompkinsville

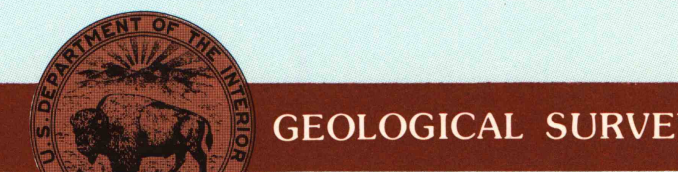
KENTUCKY-TENNESSEE

1:100 000-scale
planimetric map



30 X 60 MINUTE QUADRANGLE
SHOWING

- Elevations in meters
- Highways, roads and other manmade structures
- Water features
- Woodland areas
- Geographic names



1985
Tennessee Valley Authority


Produced by Tennessee Valley Authority
in cooperation with the United States Geological Survey

Compiled from USGS 1:24 000-scale topographic maps dated 1953-1983. Planimetry revised from aerial photographs taken 1975-1981 and other source data. Revised information not field checked. Map edited 1985

Projection and 10 000-meter grid, zone 16: Universal Transverse Mercator
25 000-foot grid ticks based on Kentucky coordinate system, south zone, and Tennessee coordinate system
1927 North American Datum
To place on the predicted North American Datum 1983 move the projection lines 5 meters south and 3 meters west
There may be private inholdings within the boundaries of the National or State reservations shown on this map

NATIONAL GEODETIC VERTICAL DATUM OF 1929
ELEVATIONS SHOWN TO THE NEAREST METER

THIS MAP COMPLIES WITH NATIONAL MAP ACCURACY STANDARDS

CONVERSION TABLE		DECLINATION DIAGRAM		ADJOINING MAPS			
Meters	Feet			1	2	3	
1	3.2808						
2	6.5617			4	5		
3	9.8424						
4	13.1232			6	7	8	
5	16.4040						
6	19.6850						
7	22.9659						
8	26.2467						
9	29.5276						
10	32.8084						
To convert meters to feet multiply by 3.2808		UTM grid convergence (GN) and 1985 magnetic declination (MN) at center of map Diagram is approximate		1 Beaver Dam 2 Campbellville 3 Somerset 4 Bowling Green 5 Corinth 6 Nashville 7 Knoxville 8 Oak Ridge			
To convert feet to meters multiply by 0.3048							

FOR SALE BY U.S. GEOLOGICAL SURVEY, RESTON, VIRGINIA 22092
TENNESSEE DEPARTMENT OF CONSERVATION, DIVISION OF GEOLOGY
NASHVILLE, TENN. 37219 AND
U.S. TENNESSEE VALLEY AUTHORITY, CHATTANOOGA, TENN. 37401
OR KNOXVILLE, TENN. 37902

Topographic Map Symbols

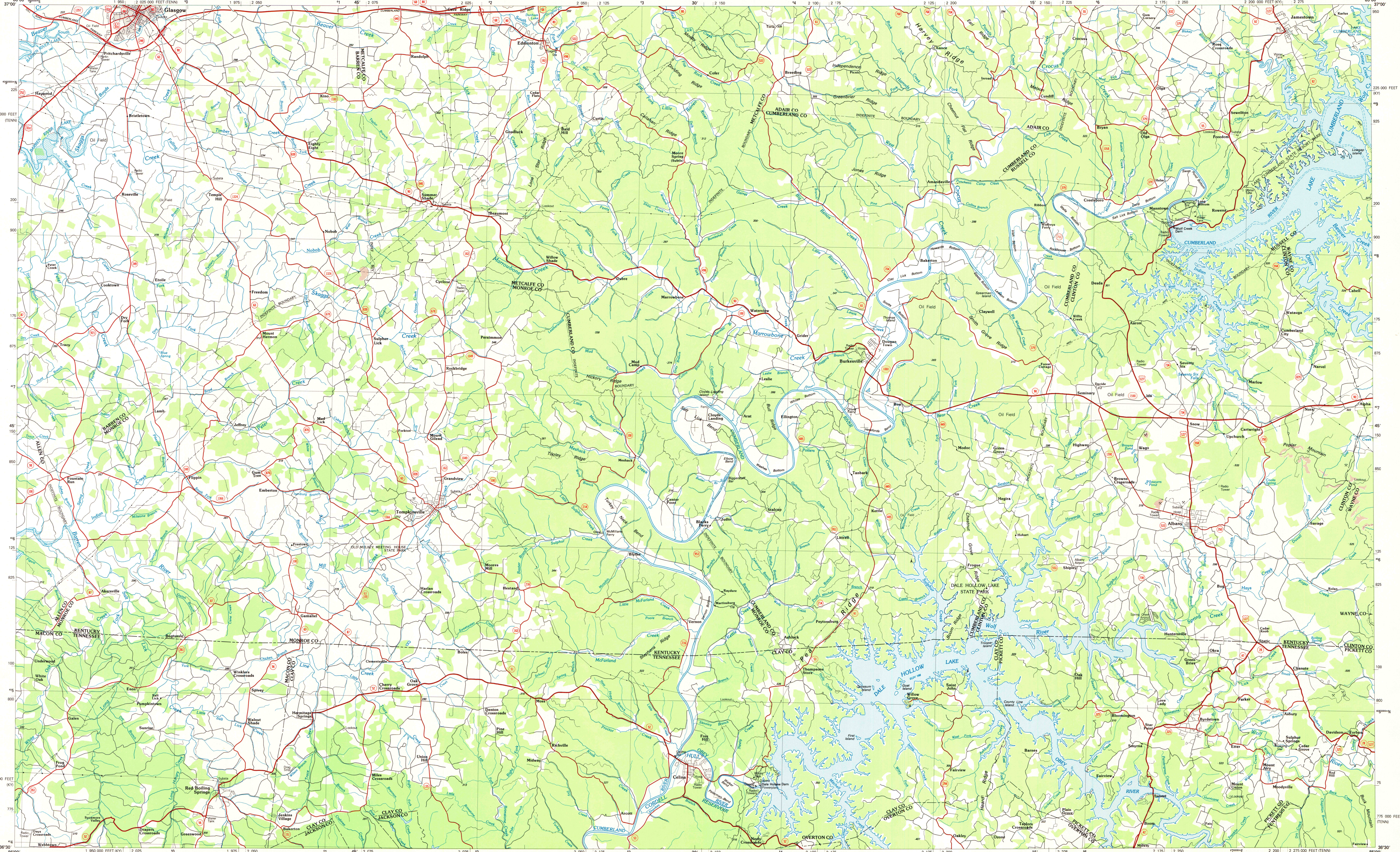
Primary highway, hard surface	
Secondary highway, hard surface	
Light duty road, principal street, hard or improved surface	
Other road or street; trail	
Route marker: Interstate, U. S., State	
Railroad: standard gage; narrow gage	
Bridge: overpass; underpass	
Tunnel: road; railroad	
Built up area; locality; elevation	
Airport: landing field; landing strip	
National boundary	
State boundary	
County boundary	
National or State reservation boundary	
Land grant boundary	
U. S. public lands survey: range, township; section	
Range, township; section line: protected	
Power transmission line; pipeline	
Dam; dam with lock	
Cemetery; building	
Windmill; water well; spring	
Mine shaft; adit or cave; mine, quarry; gravel pit	
Campground; picnic area; U. S. location monument	
Ruins; cliff dwelling	
Distorted surface: strip mine, lava; sand	
Contours: index; intermediate; supplementary	
Bathymetric contours: index; intermediate	
Stream, lake; perennial; intermittent	
Rapids, weirs and small falls, large and small	
Area to be submerged; marsh, swamp	
Land subject to controlled inundation; woodland	
Scrub; mangrove	
Orchard; vineyard	

A pamphlet describing topographic maps is available on request

MAR 15 1987
ARTHUR H. ROBINSON MAP LIBRARY
University of Wisconsin-Madison

SET Ecoc-9/8

TOMPKINSVILLE, KENTUCKY-TENNESSEE



1:100 000
SCALE 1:100 000
1 CENTIMETER ON THE MAP REPRESENTS 1 KILOMETER ON THE GROUND

TOMPKINSVILLE, KENTUCKY-TENNESSEE
36085-E1-PL-100
1985
U.S. Regional
Depository Copy
DO NOT DISCARD