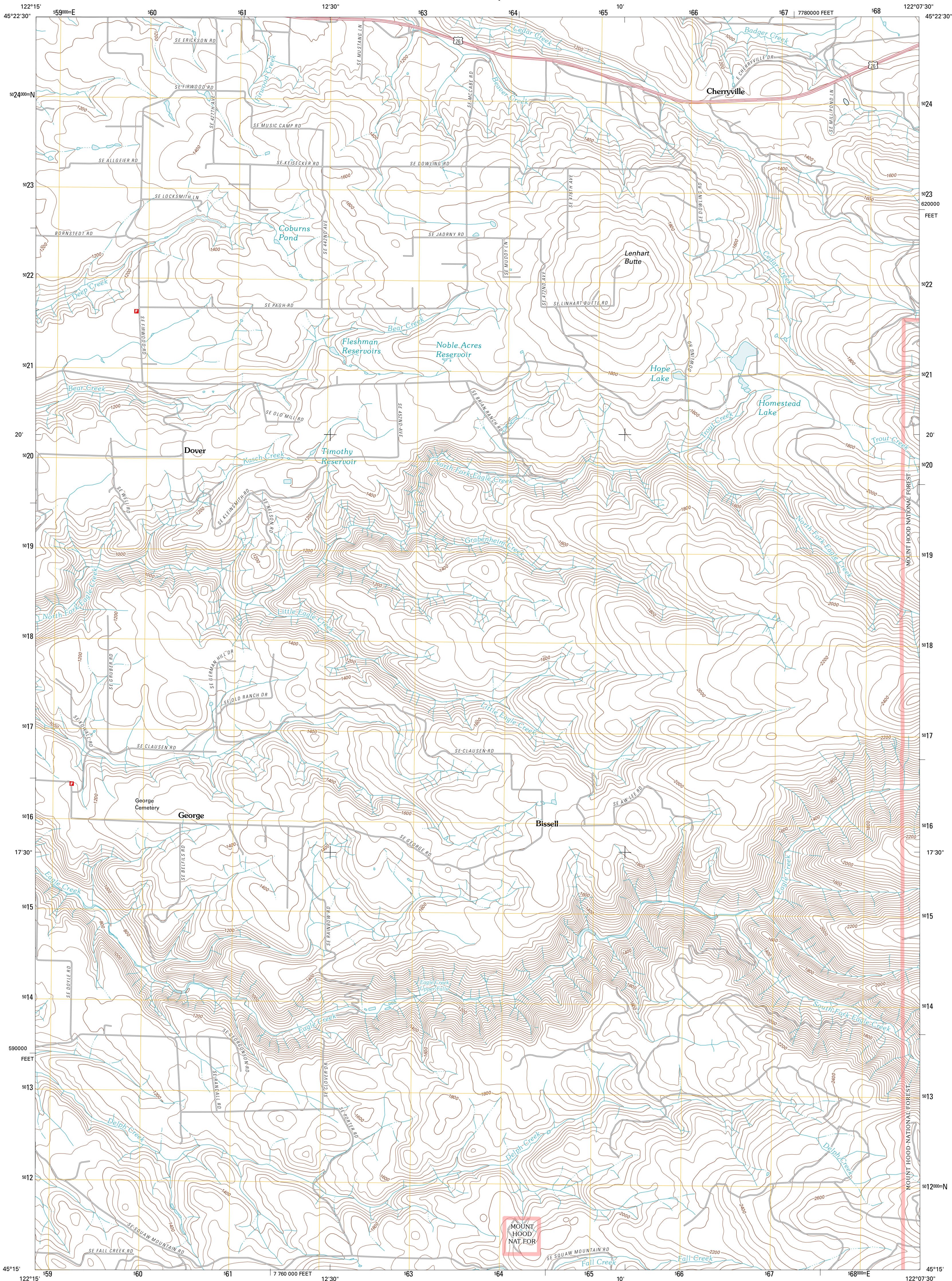




U.S. DEPARTMENT OF THE INTERIOR  
U. S. GEOLOGICAL SURVEY

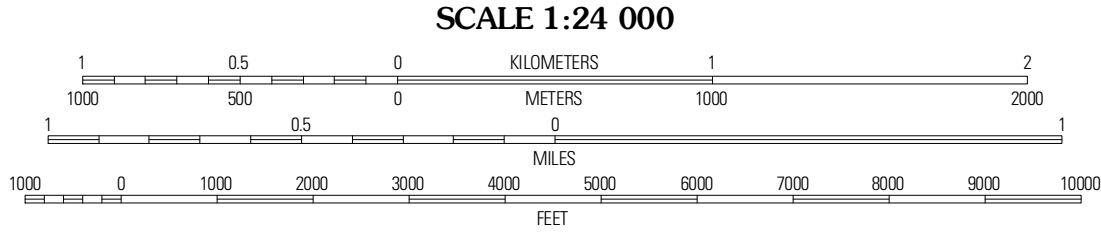
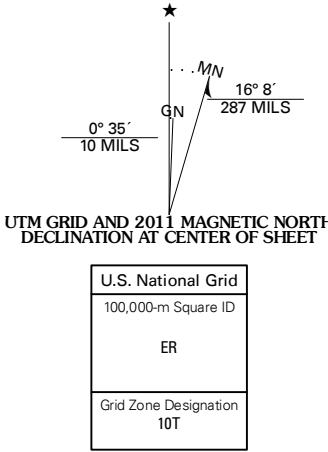


CHERRYVILLE QUADRANGLE  
OREGON-CLACKAMAS CO.  
7.5-MINUTE SERIES



Produced by the United States Geological Survey  
North American Datum of 1983 (NAD83)  
World Geodetic System of 1984 (WGS84). Projection and  
1 000 meter grid. Universal Transverse Mercator, Zone 10T  
10 000-foot ticks. Oregon Coordinate System of 1983 (north  
zone)

Imagery.....NAIP, June 2009  
Roads.....©2006-2010 Tele Atlas  
Roads within US Forest Service Lands.....FSTopo Data  
with limited Forest Service updates, 2009  
Names.....National Hydrography Dataset, 2009  
Hydrography.....National Hydrography Dataset, 2009  
Contours.....National Elevation Dataset, 1999  
Boundaries.....Census, IBWC, IBC, USGS, 1972 - 2010



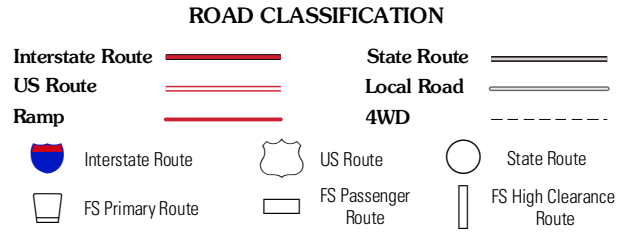
CONTOUR INTERVAL 40 FEET  
NORTH AMERICAN VERTICAL DATUM OF 1988  
This map was produced to conform with version 0.5.10  
of the USGS US Topo Product Standard.  
A metadata file associated with this product is draft version 0.5.16



QUADRANGLE LOCATION

Sandy	Bull Run	Brightwood
Estacada	Cherryville	Wildcat Mountain
Elwood	Bedford Point	Three Lynx

ADJOINING 7.5' QUADRANGLES



Check with local Forest Service unit  
for current travel conditions and restrictions.

CHERRYVILLE, OR  
2011