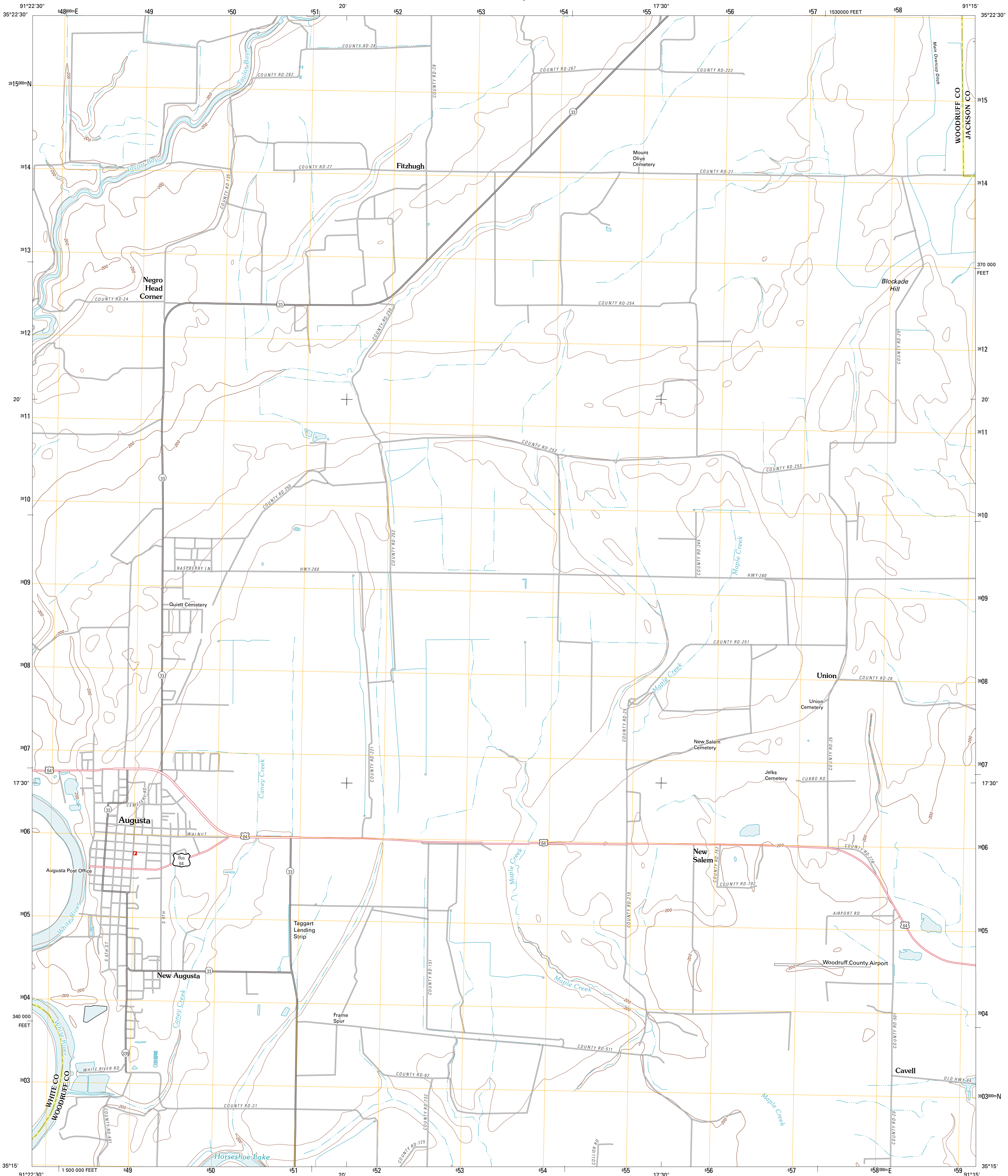




U.S. DEPARTMENT OF THE INTERIOR  
U. S. GEOLOGICAL SURVEY



AUGUSTA QUADRANGLE  
ARKANSAS  
7.5-MINUTE SERIES

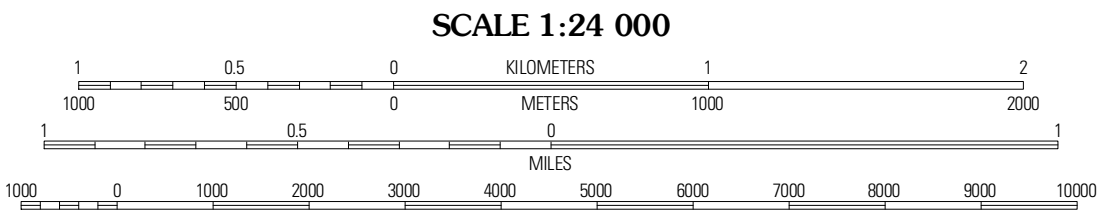


Produced by the United States Geological Survey  
North American Datum of 1983 (NAD83)  
World Geodetic System of 1984 (WGS84), Projection and  
1 000-meter grid; Universal Transverse Mercator, Zone 15S  
10 000-foot ticks; Arkansas Coordinate System of 1983  
(north zone)

Imagery.....NAIP, August 2009 - September 2009  
Roads.....©2006-2010 Tele Atlas  
Names.....©2006-2010 Tele Atlas  
Hydrography.....National Hydrography Dataset, 2009  
Contours.....National Elevation Dataset, 1999  
Boundaries.....Census, IBWC, IBC, USGS, 1972-2010

UTM GRID AND 2011 MAGNETIC NORTH  
DECLINATION AT CENTER OF SHEET

U.S. National Grid
100,000-m Square ID
XV
Grid Zone Designation
15S



CONTOUR INTERVAL 10 FEET  
NORTH AMERICAN VERTICAL DATUM OF 1988  
This map was produced to conform with version 0.5.10  
of the USGS US Topo Product Standard.  
A metadata file associated with this product is draft version 0.5.16



QUADRANGLE LOCATION		
Bradford	Augusta NE	Tupelo
Augusta SW	Augusta	McCoy
Georgetown	Gregory	Grays

ROAD CLASSIFICATION

Interstate Route	State Route
US Route	Local Road
Ramp	4WD

Interstate Route US Route State Route

AUGUSTA, AR  
2011