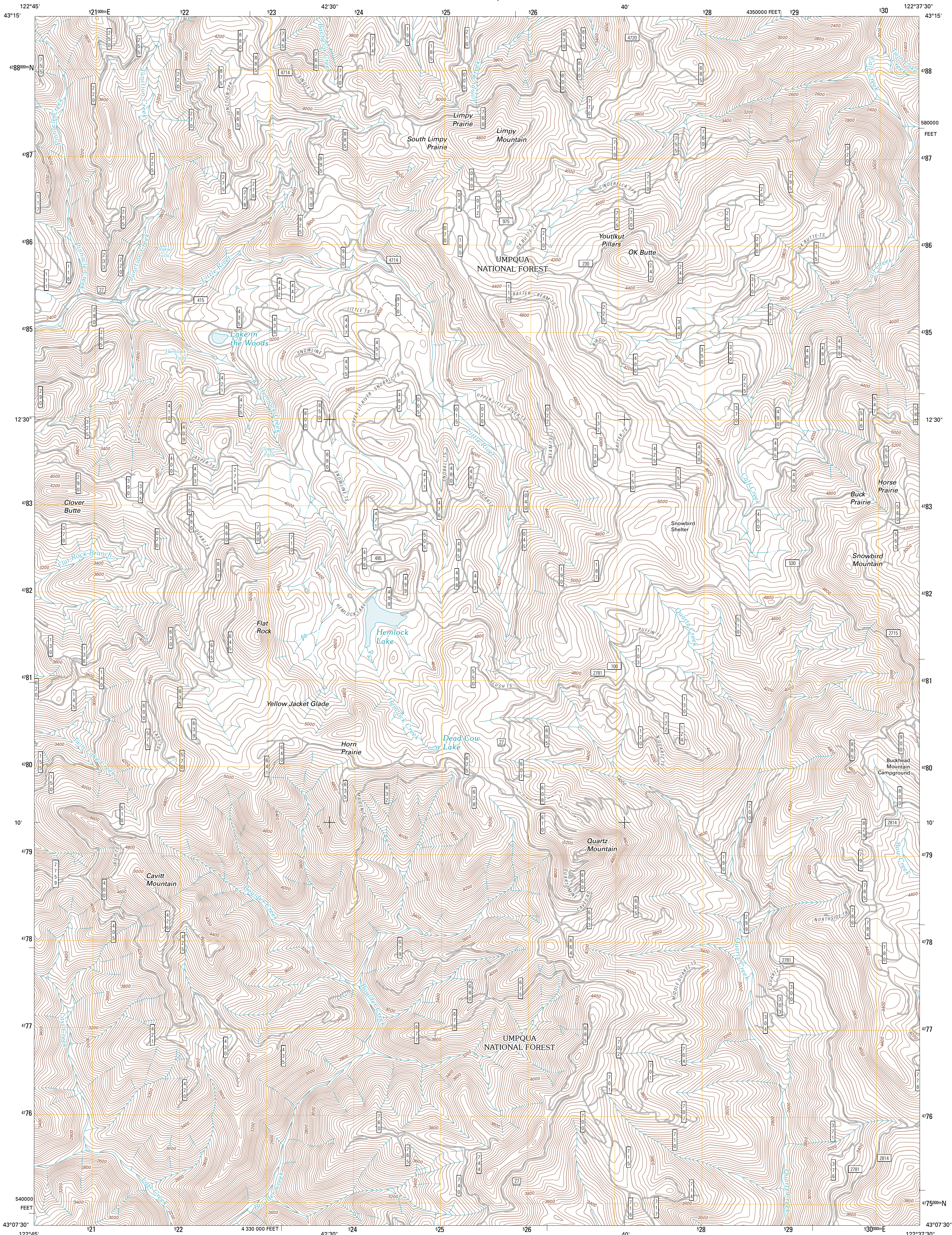




U.S. DEPARTMENT OF THE INTERIOR  
U. S. GEOLOGICAL SURVEY

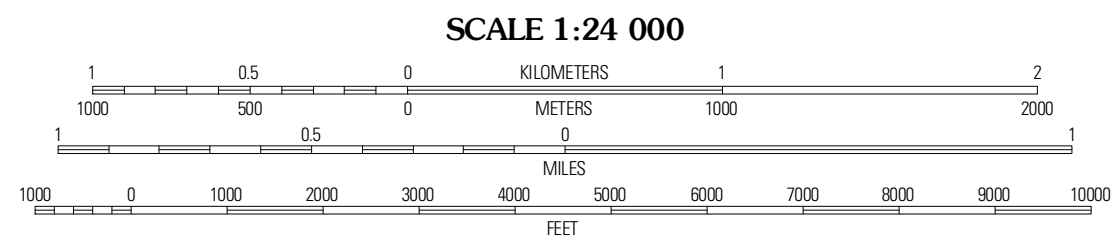
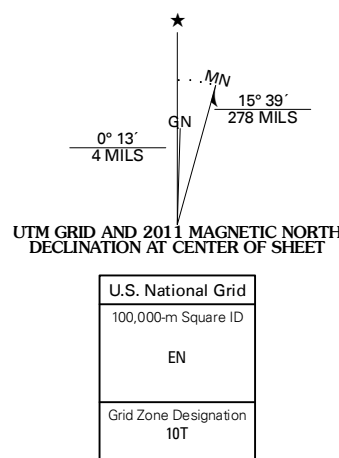


QUARTZ MOUNTAIN QUADRANGLE  
OREGON-DOUGLAS CO.  
7.5-MINUTE SERIES



Produced by the United States Geological Survey  
North American Datum of 1983 (NAD83)  
World Geodetic System of 1984 (WGS84). Projection and  
1 000-meter grid: Universal Transverse Mercator, Zone 10T  
10 000-foot ticks: Oregon Coordinate System of 1983 (south  
zone)

Imagery.....NAIP, June 2009 - July 2009  
Roads.....2006-2010 1:50,000 Scale  
Roads within US Forest Service Lands.....FSTopo Data  
with limited Forest Service updates, 2009  
Names.....GNIS, 2010  
Hydrography.....National Hydrography Dataset, 2009  
Contours.....National Elevation Dataset, 1999  
Boundaries.....Census, IBWC, IBC, USGS, 1972 - 2010



CONTOUR INTERVAL 40 FEET  
NORTH AMERICAN VERTICAL DATUM OF 1988  
This map was produced to conform with version 0.5.10  
of the USGS US Topo Product Standard.  
A metadata file associated with this product is draft version 0.5.16



Mice Mountain	Steamboat	Ilahoe Rock
Taft Mountain	Quartz Mountain	Twin Lakes Mountain
Damont Creek	Acker Rock	Buckeye Lake

ROAD CLASSIFICATION  
Interstate Route  
US Route  
Ramp  
Interstate Route  
US Route  
FS Passenger Route  
State Route  
Local Road  
4WD  
FS Primary Route  
FS High Clearance Route  
Check with local Forest Service unit  
for current travel conditions and restrictions.

QUARTZ MOUNTAIN, OR  
2011

ADJOINING 7.5 QUADRANGLES