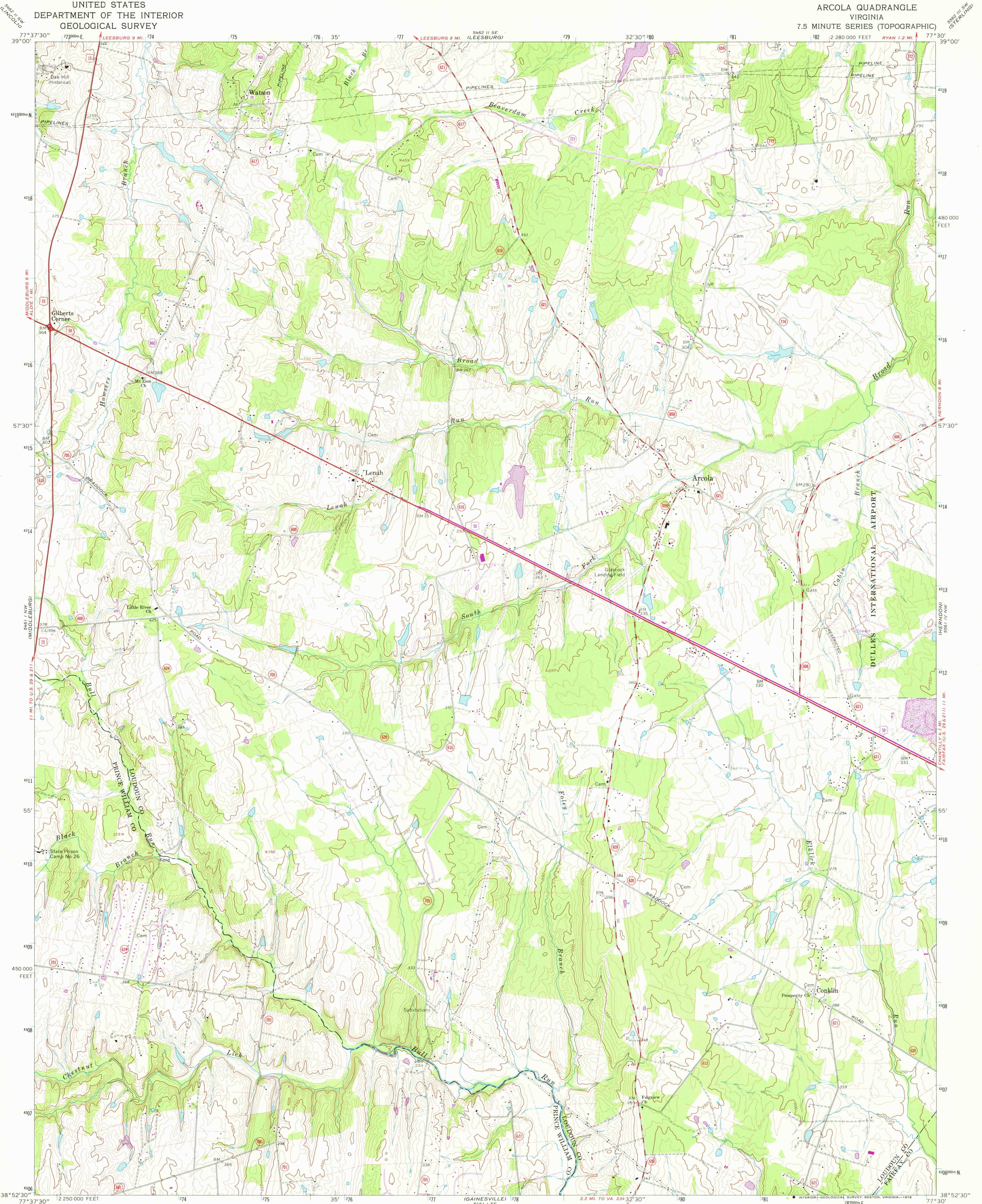


UNITED STATES  
DEPARTMENT OF THE INTERIOR  
GEOLOGICAL SURVEY

ARCOLA QUADRANGLE  
VIRGINIA  
7.5 MINUTE SERIES (TOPOGRAPHIC)



Mapped, edited, and published by the Geological Survey

Control by USGS, USC&GS, and USCE

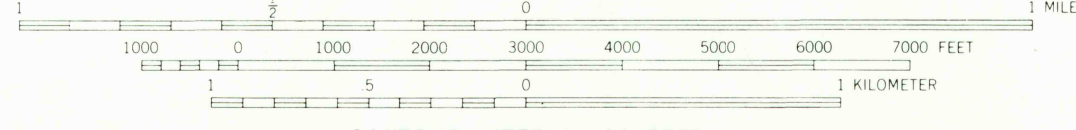
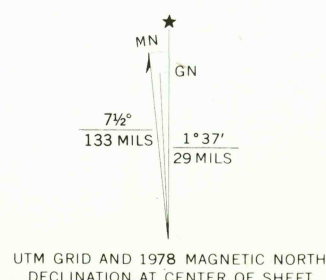
Topography by photogrammetric methods from aerial  
photographs taken 1963 and 1964. This information is unchecked  
Supersedes Army Map Service map dated 1943

Polyconic projection. 1927 North American datum  
10,000-foot grid based on Virginia coordinate system, north zone  
1000-meter Universal Transverse Mercator grid ticks,  
zone 18, shown in blue

Fine red dashed lines indicate selected fence and field lines where  
generally visible on aerial photographs. This information is unchecked

There may be private inholdings within the boundaries of  
the National or State Reservations shown on this map

Revisions shown in purple compiled in cooperation with Commonwealth  
of Virginia agencies from aerial photographs taken 1977 and other  
source data. This information not field checked. Map edited 1978



CONTOUR INTERVAL 10 FEET  
NATIONAL GEODETIC VERTICAL DATUM OF 1929

THIS MAP COMPLIES WITH NATIONAL MAP ACCURACY STANDARDS  
FOR SALE BY U.S. GEOLOGICAL SURVEY, RESTON, VIRGINIA 22092  
AND VIRGINIA DIVISION OF MINERAL RESOURCES, CHARLOTTESVILLE, VIRGINIA 22903  
A FOLDER DESCRIBING TOPOGRAPHIC MAPS AND SYMBOLS IS AVAILABLE ON REQUEST

Boundary lines shown in purple compiled from latest  
information available from the controlling authority

ROAD CLASSIFICATION  
Primary highway, all weather, hard surface  
Secondary highway, all weather, hard surface  
Light-duty road, all weather, improved surface  
Unimproved road, fair or dry weather  
U.S. Route  
State Route

USGS  
Historical File  
Topographic Division

ARCOLA, VA.  
N 3852.5—W 7730.7.5

1968  
PHOTOREVISED 1978  
AMS 5461 I NE—SERIES V834

MAR 15 1978

2850