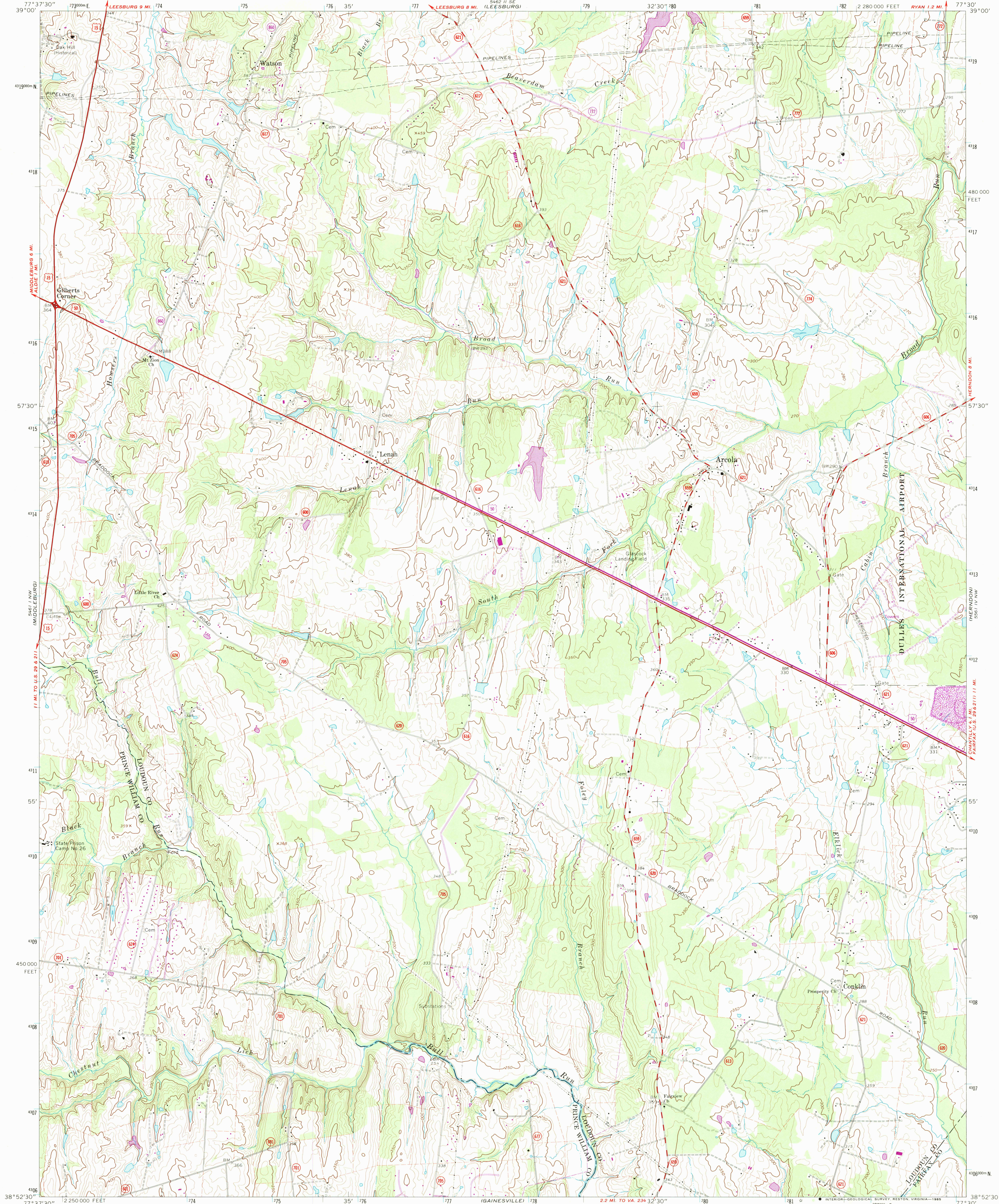


UNITED STATES
DEPARTMENT OF THE INTERIOR
GEOLOGICAL SURVEY

ARCOLA QUADRANGLE
VIRGINIA
7.5 MINUTE SERIES (TOPOGRAPHIC)



Mapped, edited, and published by the Geological Survey

Control by USGS, USC&GS, and USCE

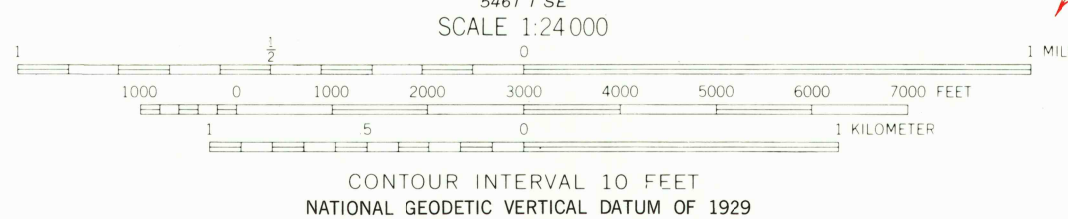
Topography by photogrammetric methods from aerial photographs taken 1963 and 1964. Field checked 1968. Supersedes Army Map Service map dated 1943.

Polyconic projection. 1927 North American datum 10,000-foot grid based on Virginia coordinate system, north zone 1000-meter Universal Transverse Mercator grid ticks, zone 18, shown in blue.

Fine red dashed lines indicate selected fence and field lines where generally visible on aerial photographs. This information is unchecked. There may be private inholdings within the boundaries of the National or State reservations shown on this map.

Revisions shown in purple compiled in cooperation with Commonwealth of Virginia agencies from aerial photographs taken 1977 and other source data. This information not field checked. Map edited 1978.

Map photoinspected 1981
No major culture or drainage changes observed



ROAD CLASSIFICATION	
Primary highway, all weather, hard surface	Light-duty road, all weather, improved surface
Secondary highway, all weather, hard surface	Unimproved road, fair or dry weather
State Route	

USGS NMU HISTORICAL MAP
DEC 31 1985
REC'D FILE COPY
ARCOLA, VA.
N3852.5—W7730/7.5
PHOTOINSPECTED 1981
1968
PHOTOREVISED 1978
AMS 5461 I NE—SERIES V834