

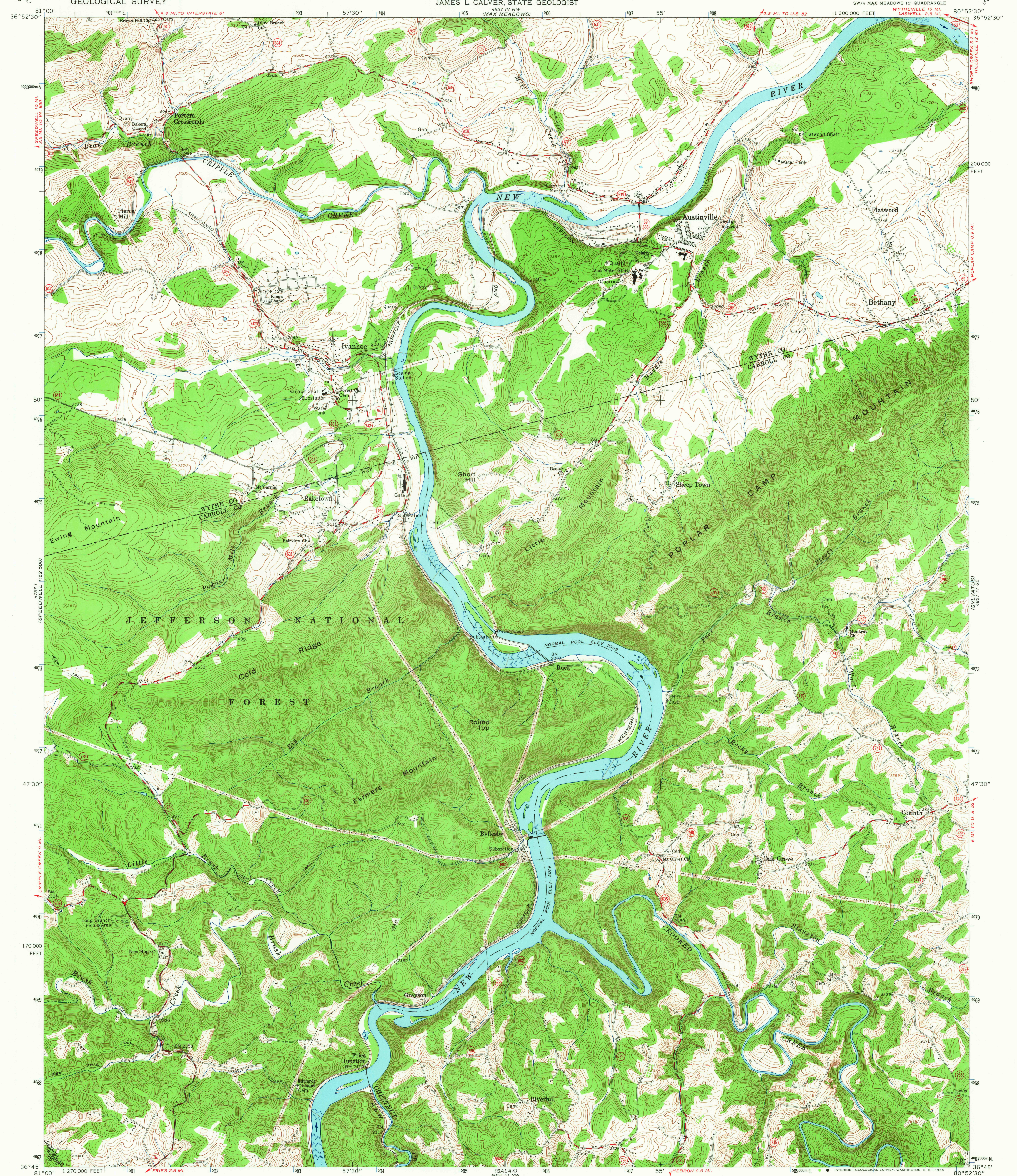
4271  
SPEEDWELL  
1:62,500

UNITED STATES  
DEPARTMENT OF THE INTERIOR  
GEOLOGICAL SURVEY

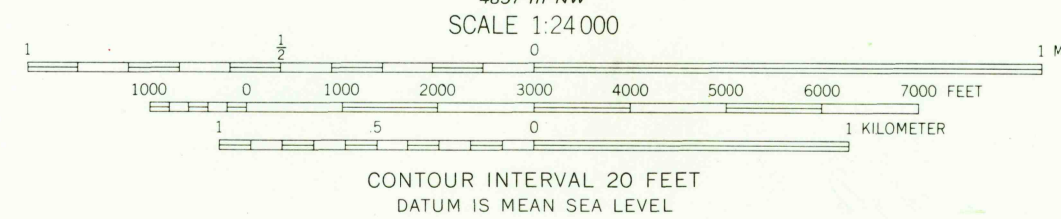
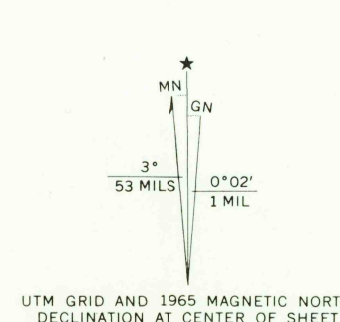
COMMONWEALTH OF VIRGINIA  
DIVISION OF MINERAL RESOURCES  
JAMES L. CALVER, STATE GEOLOGIST

AUSTINVILLE QUADRANGLE  
VIRGINIA  
7.5 MINUTE SERIES (TOPOGRAPHIC)

4271 IV NE  
FOSTERS FALLS

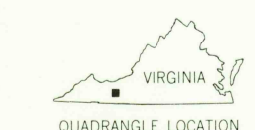


Mapped, edited, and published by the Geological Survey  
Control by USGS and USC&GS  
Topography by photogrammetric methods from aerial  
photographs taken 1963. Field checked 1965  
Polyconic projection. 1927 North American datum  
10,000-foot grid based on Virginia coordinate system, south zone  
1000-meter Universal Transverse Mercator grid ticks,  
zone 17, shown in blue  
Fine red dashed lines indicate selected fence and field lines where  
generally visible on aerial photographs. This information is unchecked



THIS MAP COMPLIES WITH NATIONAL MAP ACCURACY STANDARDS  
FOR SALE BY U. S. GEOLOGICAL SURVEY, WASHINGTON, D. C. 20242  
AND VIRGINIA DIVISION OF MINERAL RESOURCES, CHARLOTTESVILLE, VIRGINIA  
A FOLDER DESCRIBING TOPOGRAPHIC MAPS AND SYMBOLS IS AVAILABLE ON REQUEST

USGS  
Historical File  
Topographic Division



ROAD CLASSIFICATION  
Heavy-duty ——— Light-duty ———  
Medium-duty ——— Unimproved dirt ———  
U. S. Route ——— State Route ———

U.S.G.S.  
FILE COPY  
TOPOGRAPHIC DIVISION

AUSTINVILLE, VA.  
SW/4 MAX MEADOWS 15' QUADRANGLE  
N3645—W8052.5/7.5  
1965  
AMS 4857 IV SW—SERIES V834

2750  
DEC 14 1965