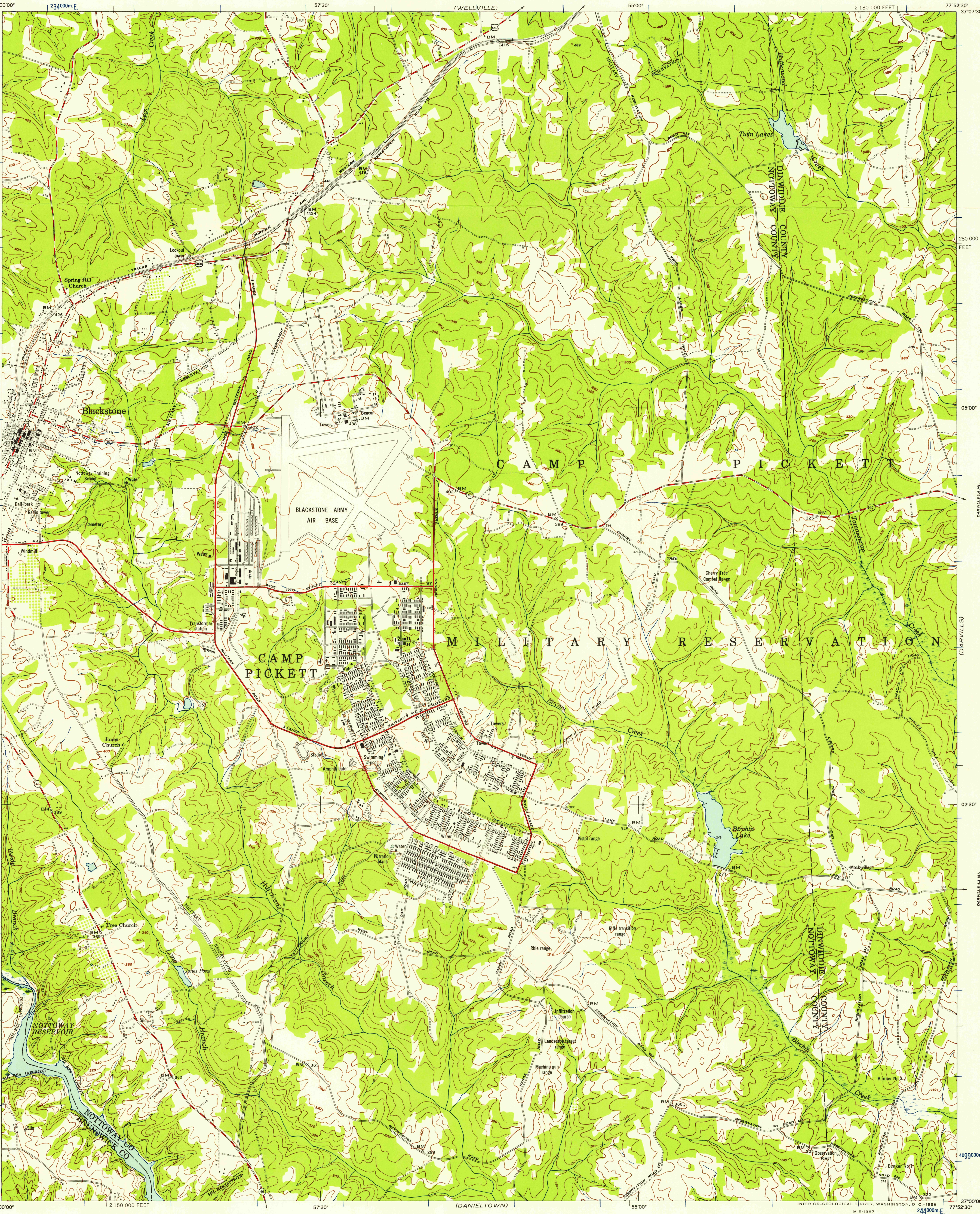


VIRGINIA

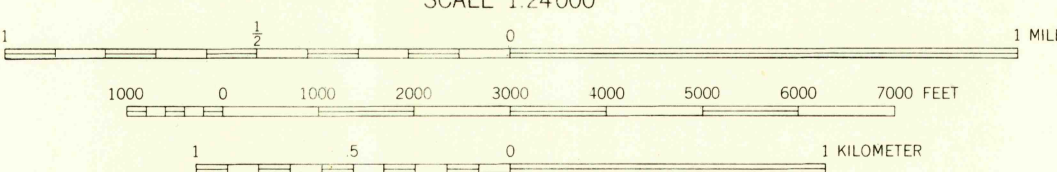
BLACKSTONE

SHEET 5458 III SW
SERIES V834



Prepared by the Army Map Service (AM), Corps of Engineers, U. S. Army, Washington, D. C. Redrawn in 1950 from Virginia, 1:25,000, AMS, Sheet 5458 III SW, 1948. Planimetric detail revised by photo-planimetric methods. Aerial photography May and Dec. 1947. Original mapping by photogrammetric (multiplex) methods by Soil Conservation Service, 1943. Horizontal and vertical control by USGS, USCGS and SCS. Map field checked. Approximate southeast-quarter revised by AMS (TV) from a planimetric survey by USGS, 1951.

LEGEND	
ROAD DATA 1949 AND 1951	
In developed areas, only through roads are classified.	
Hard surface, heavy duty road, four or more lanes wide	Improved light duty road, street
Hard surface, heavy duty road, two lanes wide	Unimproved dirt road
Hard surface, medium duty road, four or more lanes wide	Trail
Hard surface, medium duty road, two lanes wide	Route markers: Federal, State
Hard surface, light duty road, two lanes wide	Horizontal control point
Buildings	Bench mark, non-monumented
Barracks, sheds, greenhouses, stadiums, etc.	Bench mark, monumented
Standard gauge railroad	Spot elevation in feet: Checked; Unchecked
Narrow gauge railroad	Woods or brushwood
Railroad in street	Vineyard; Orchard
Carline	Intermittent lake
National boundary	Intermittent stream; Dam
State boundary (with monument)	Swamp, marsh
County boundary	Rapids; Falls
Corporate limits	Large rapids and falls
Military reservation	
Other reservation	



CONTOUR INTERVAL 20 FEET
DATUM IS MEAN SEA LEVEL

10,000-FOOT GRID TICKS, VIRGINIA PLANE COORDINATE SYSTEM, SOUTH ZONE, SHOWN IN BLACK
1000-METER GRID TICKS, UNIVERSAL TRANSVERSE MERCATOR SYSTEM, ZONE 18, SHOWN IN BLUE

REPRINTED FROM MILITARY EDITION FOR CIVIL USE
FOR SALE BY U. S. GEOLOGICAL SURVEY, WASHINGTON 25, D. C.
A FOLDER DESCRIBING TOPOGRAPHIC MAPS AND SYMBOLS IS AVAILABLE ON REQUEST

USGS
Historical File
Topographic Division

APPROXIMATE MEAN DECLINATION, 1951

BLACKSTONE, VIRGINIA
N 37°00' W 77°52' 5.7.5

FEB 2 0 1958

2850