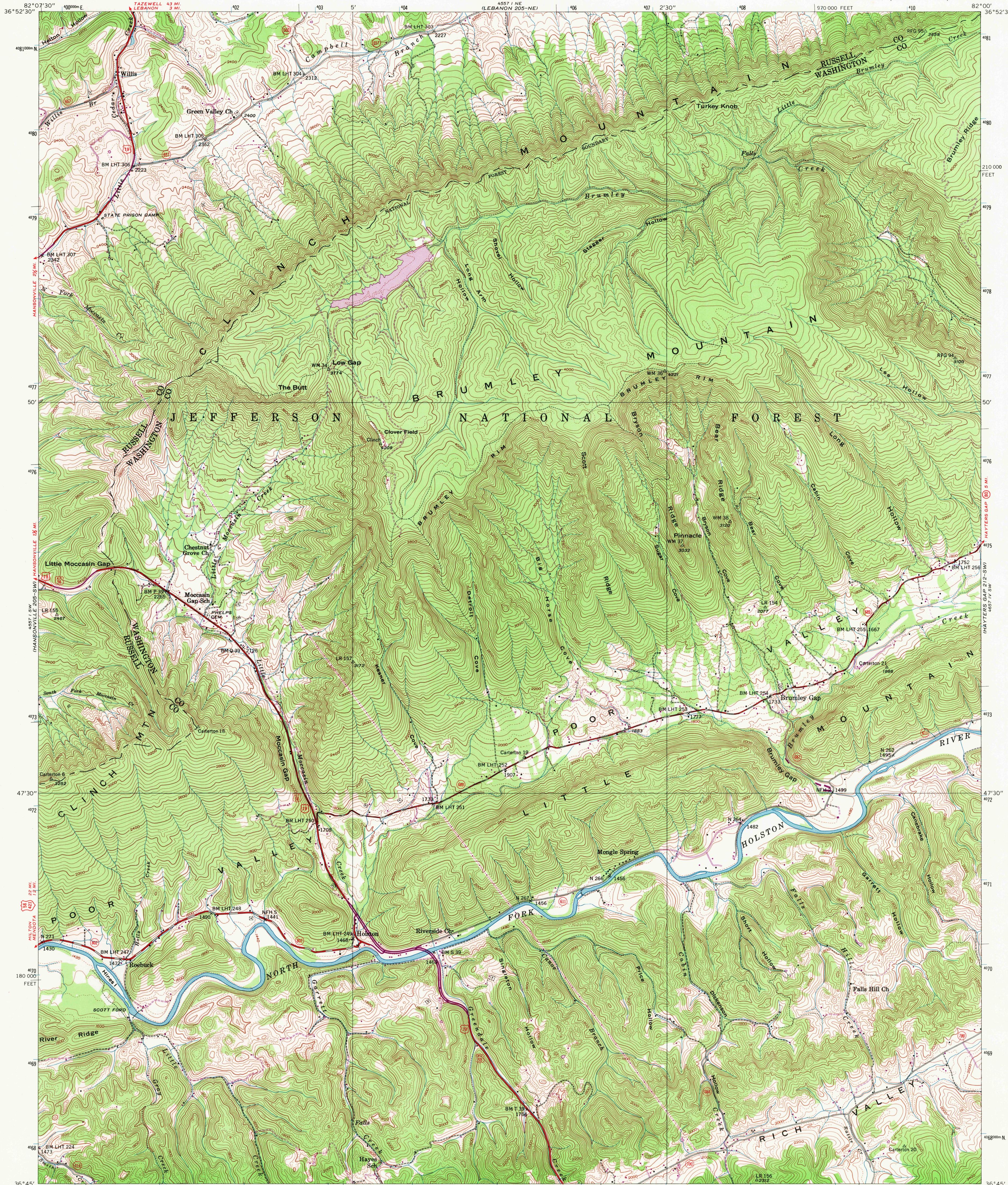


UNITED STATES  
DEPARTMENT OF THE INTERIOR  
GEOLOGICAL SURVEY

UNITED STATES  
TENNESSEE VALLEY AUTHORITY  
MAPS AND SURVEYS BRANCH

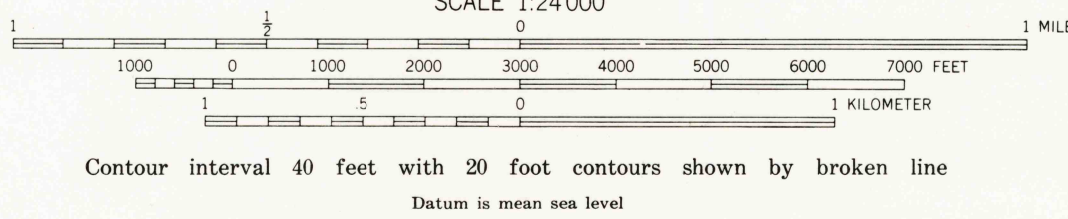
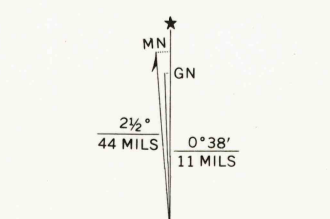
BRUMLEY QUADRANGLE  
VIRGINIA  
7.5 MINUTE SERIES (TOPOGRAPHIC) 205-SE



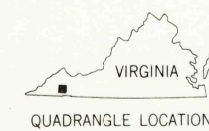
Mapped and edited by Tennessee Valley Authority  
Published by Geological Survey  
Control by USGS, USCGS, and Tennessee Valley Authority  
Topography by photogrammetric methods from aerial  
photographs. Field checked 1938

Polyconic projection. 1927 North American datum  
10,000-foot grid based on Virginia coordinate system, south zone  
1000-meter Universal Transverse Mercator grid ticks, zone 17,  
shown in blue

Revisions shown in purple and recomposition of woodland areas  
compiled by the Geological Survey in cooperation with Commonwealth  
of Virginia agencies from aerial photographs taken 1969  
This information not field checked



FOR SALE BY U. S. GEOLOGICAL SURVEY, WASHINGTON, D. C. 20242,  
VIRGINIA DIVISION OF MINERAL RESOURCES, CHARLOTTESVILLE, VIRGINIA 22903,  
AND U. S. TENNESSEE VALLEY AUTHORITY, CHATTANOOGA, TENN. 37401 OR KNOXVILLE, TENN. 37902  
A FOLDER DESCRIBING TOPOGRAPHIC MAPS AND SYMBOLS IS AVAILABLE ON REQUEST



ROAD CLASSIFICATION  
Heavy-duty ——— Light-duty ———  
Medium-duty ——— Unimproved dirt ———  
U.S. Route ——— State Route ———

USGS  
HISTORICAL FILE  
TOPOGRAPHIC DIVISION

BRUMLEY, VA.  
N3645-W8200/7.5  
1938  
PHOTOREVISED 1969  
AMS 4557 1 SE-SERIES V834