

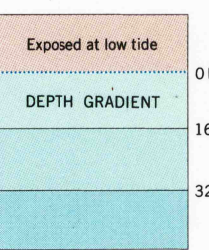
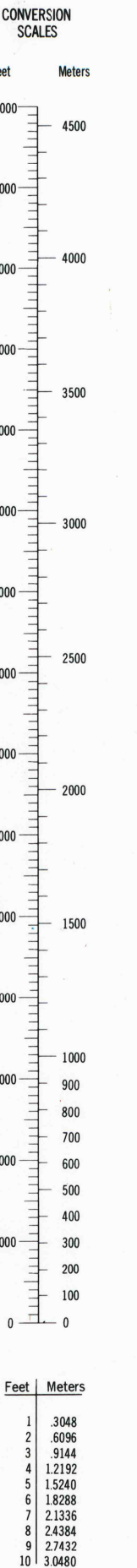
UNITED STATES  
DEPARTMENT OF THE INTERIOR  
GEOLOGICAL SURVEY



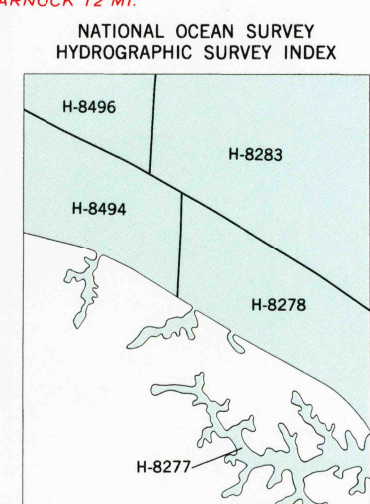
COMMONWEALTH OF VIRGINIA  
DIVISION OF MINERAL RESOURCES

BURGESS QUADRANGLE  
VIRGINIA-MARYLAND  
7.5 MINUTE SERIES (TOPOGRAPHIC-BATHYMETRIC)

58° 59' 30" E  
POINT LOOKOUT



Maped, edited, and published by the Geological Survey and the National Ocean Survey  
Control by USGS and NOS/NOAA  
Topography by photogrammetric methods from aerial photographs taken 1967. Field checked 1968  
Bathymetry compiled by the National Ocean Survey from tide-coordinated hydrographic surveys. This information is not intended for navigational purposes  
Mean low water (dotted) line and mean high water (heavy solid) line compiled by NOS from tide-coordinated aerial photographs. Apparent shoreline (outer edge of vegetation) shown by light solid line  
Polyconic projection, 10,000-foot grid ticks based on Virginia coordinate system, south zone, and Maryland coordinate system 1000-meter Universal Transverse Mercator grid, zone 18  
1927 North American Datum  
To place on the predicted North American Datum 1983 move the projection lines 3 meters south and 29 meters west as shown by dashed corner ticks  
Map photoinspected 1973  
No major culture or drainage changes observed



SCALE 1:24,000

CONTOUR INTERVAL 10 FEET  
DASHED LINES REPRESENT 5-FOOT CONTOURS  
NATIONAL GEODETIC VERTICAL DATUM OF 1929  
BATHYMETRIC CONTOUR INTERVAL 1 METER WITH SUPPLEMENTARY 0.5 METER CONTOURS-DATUM IS MEAN LOW WATER  
THE RELATIONSHIP BETWEEN THE TWO DATUMS IS VARIABLE  
THE MEAN RANGE OF TIDE IS APPROXIMATELY 0.2 METER

BASE MAP COMPLIES WITH NATIONAL MAP ACCURACY STANDARDS  
BATHYMETRIC SURVEY DATA COMPLIES WITH INTERNATIONAL HYDROGRAPHIC ORGANIZATION (IHO) SPECIAL PUBLICATION 44 ACCURACY STANDARDS AND/OR STANDARDS USED AT THE DATE OF THE SURVEY  
FOR SALE BY U. S. GEOLOGICAL SURVEY, RESTON, VIRGINIA 22092,  
NATIONAL OCEAN SURVEY, ROCKVILLE, MARYLAND 20852,  
AND VIRGINIA DIVISION OF MINERAL RESOURCES, CHARLOTTEVILLE, VIRGINIA 22903  
A FOLDER DESCRIBING TOPOGRAPHIC MAPS AND SYMBOLS IS AVAILABLE ON REQUEST

ROAD CLASSIFICATION  
Primary highway, all weather, hard surface  
Light-duty road, all weather, improved surface  
Unimproved road, fair or dry weather  
U. S. Route  
State Route

BURGESS, VA.-MD.  
37076-H3-T8-024

1968  
BATHYMETRY ADDED 1982  
PHOTOINSPECTED 1973  
DMA 5759 IV NE-SERIES V834

USGS NMD HISTORICAL MAP  
APR 15 1986  
REC'D FILE COPY

UTM GRID AND 1968 MAGNETIC NORTH DECLINATION AT CENTER OF SHEET