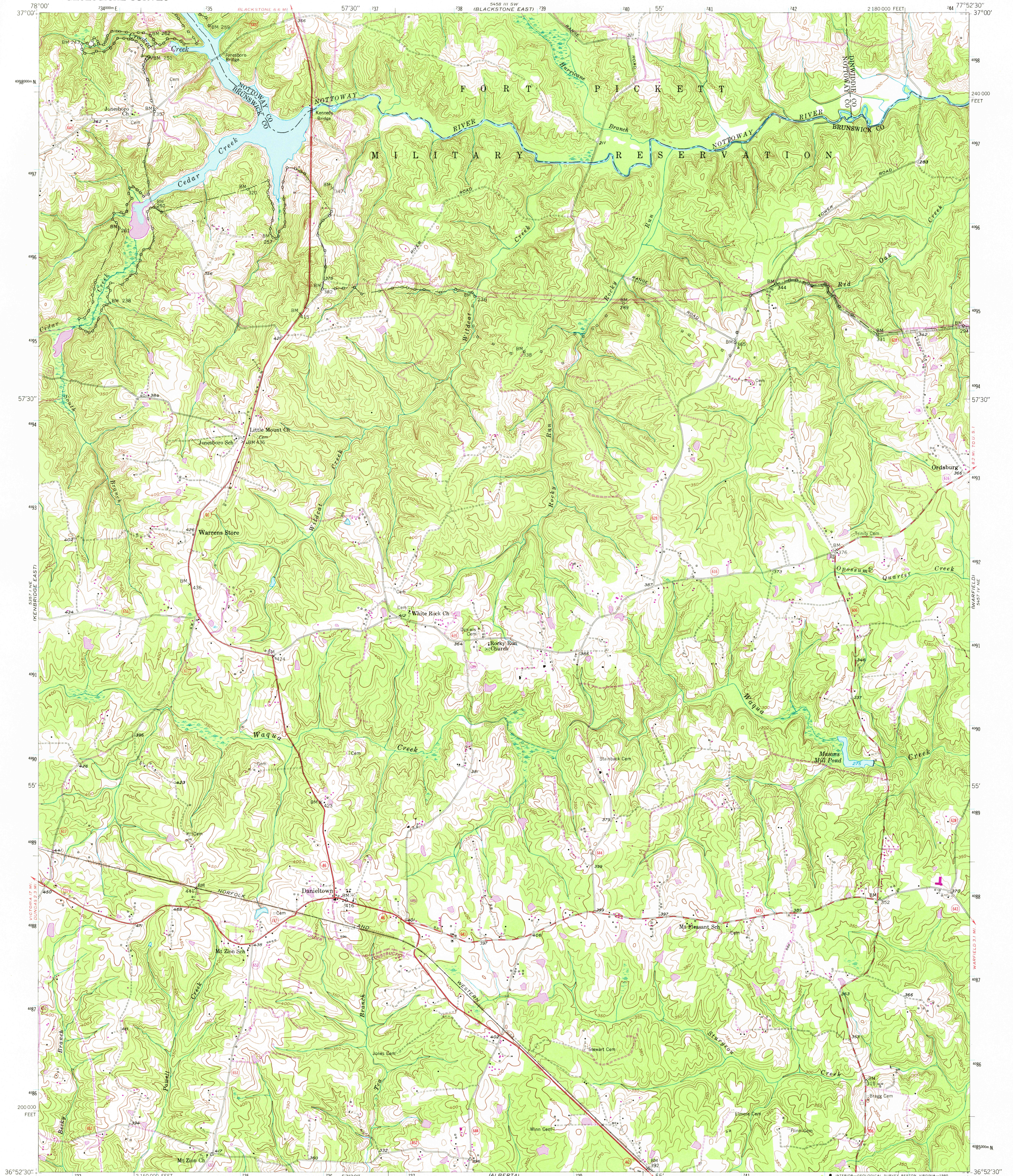
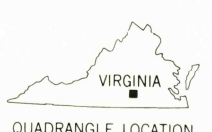
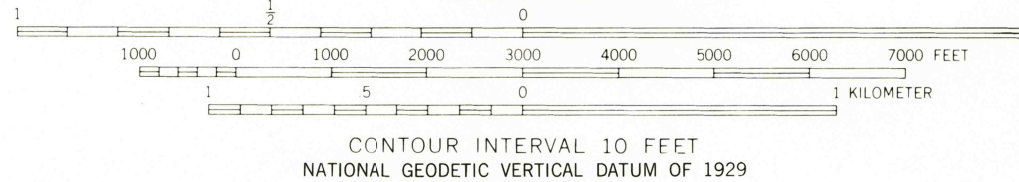
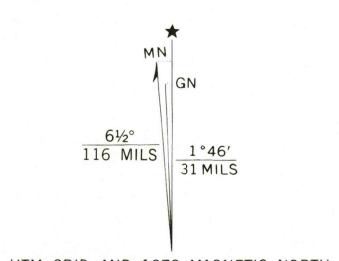


UNITED STATES  
DEPARTMENT OF THE INTERIOR  
GEOLOGICAL SURVEY

DANIELTOWN QUADRANGLE  
VIRGINIA  
7.5 MINUTE SERIES (TOPOGRAPHIC)



Mapped, edited, and published by the Geological Survey  
Control by USGS, USC&GS, and USCE  
Culture and drainage in part compiled from  
aerial photographs taken 1949  
Topography by plane-table methods 1951  
Polyconic projection. 1927 North American datum  
10,000-foot grid based on Virginia coordinate system,  
south zone  
1000-meter Universal Transverse Mercator grid ticks, zone 18,  
shown in blue  
To place on the predicted North American Datum 1983  
move the projection lines 12 meters south and  
26 meters west as shown by dashed corner ticks  
There may be private inholdings within the boundaries of  
the National or State reservations shown on this map



ROAD CLASSIFICATION			
Heavy-duty	4 LANE (6 LANE)	Light-duty	
Medium-duty	4 LANE (6 LANE)	Unimproved dirt	=====
	U. S. Route		State Route

USGS  
Historical File  
Topographic Division

DANIELSTOWN, VA.

MAY 13 1980

THIS MAP COMPLIES WITH NATIONAL MAP ACCURACY STANDARDS  
FOR SALE BY U. S. GEOLOGICAL SURVEY, RESTON, VIRGINIA 22092  
AND VIRGINIA DIVISION OF MINERAL RESOURCES, CHARLOTTESVILLE, VIRGINIA 22903  
A FOLDER DESCRIBING TOPOGRAPHIC MAPS AND SYMBOLS IS AVAILABLE ON REQUEST

Revisions shown in purple compiled in cooperation with State of  
Virginia agencies from aerial photographs taken 1978 and other  
source data. This information not field checked. Map edited 1979

N3652.5-W7752.5/7.5  
1951  
PHOTOREVISED 1979  
DMA 5457 IV NW-SERIES V834

1650