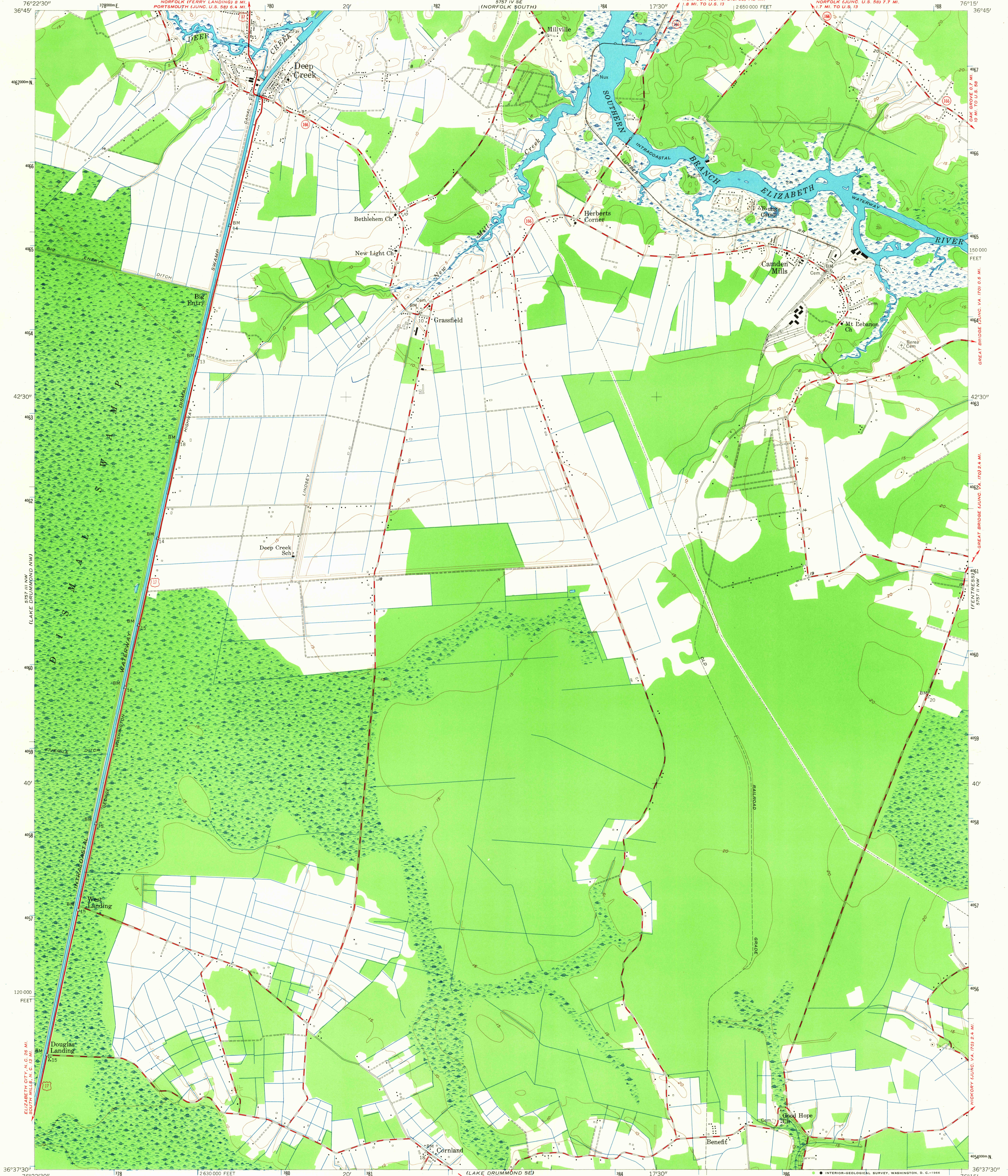
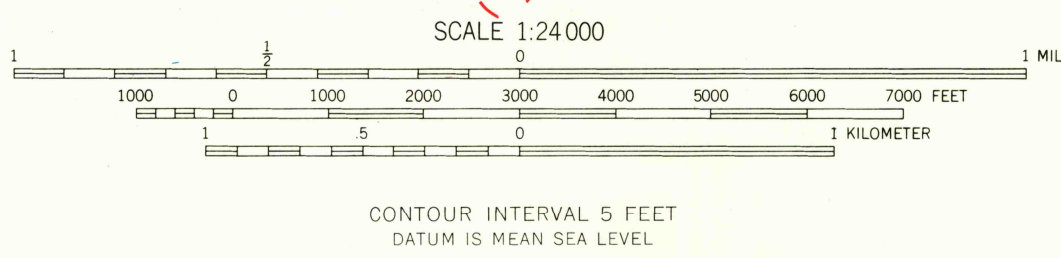
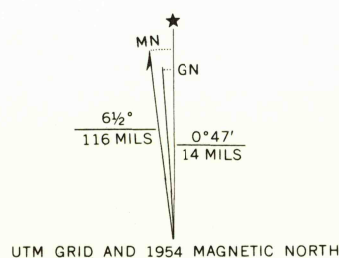


UNITED STATES
DEPARTMENT OF THE INTERIOR
GEOLOGICAL SURVEY

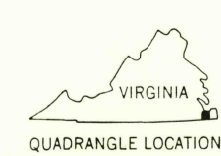
DEEP CREEK QUADRANGLE
VIRGINIA—NORFOLK CO.
7.5 MINUTE SERIES (TOPOGRAPHIC)
NE 1/4 LAKE DRUMMOND 15' QUADRANGLE



Mapped, edited, and published by the Geological Survey
Control by USGS, USC&GS and USCE
Culture and drainage in part compiled from aerial photographs taken
1953. Topography enlarged from 1:62,500 scale map of
Lake Drummond quadrangle, 15 minute series.
Original map by plane-table surveys 1940. Revised 1954
Polyconic projection. 1927 North American datum
10,000-foot grid based on Virginia coordinate system,
south zone
1000-meter Universal Transverse Mercator grid ticks,
zone 18, shown in blue



USGS
Historical File
Topographic Division



U.S.G.S.
FILE COPY
TOPOGRAPHIC DIVISION

ROAD CLASSIFICATION
Heavy-duty ——— Light-duty ———
Medium-duty ——— Unimproved dirt ———
U.S. Route ——— State Route ———

DEEP CREEK, VA.
NE 1/4 LAKE DRUMMOND 15' QUADRANGLE
N 3637.5—W 7615.7.5

1954
AMS 5757 III NE—SERIES V834

2140
AUG 2 1956