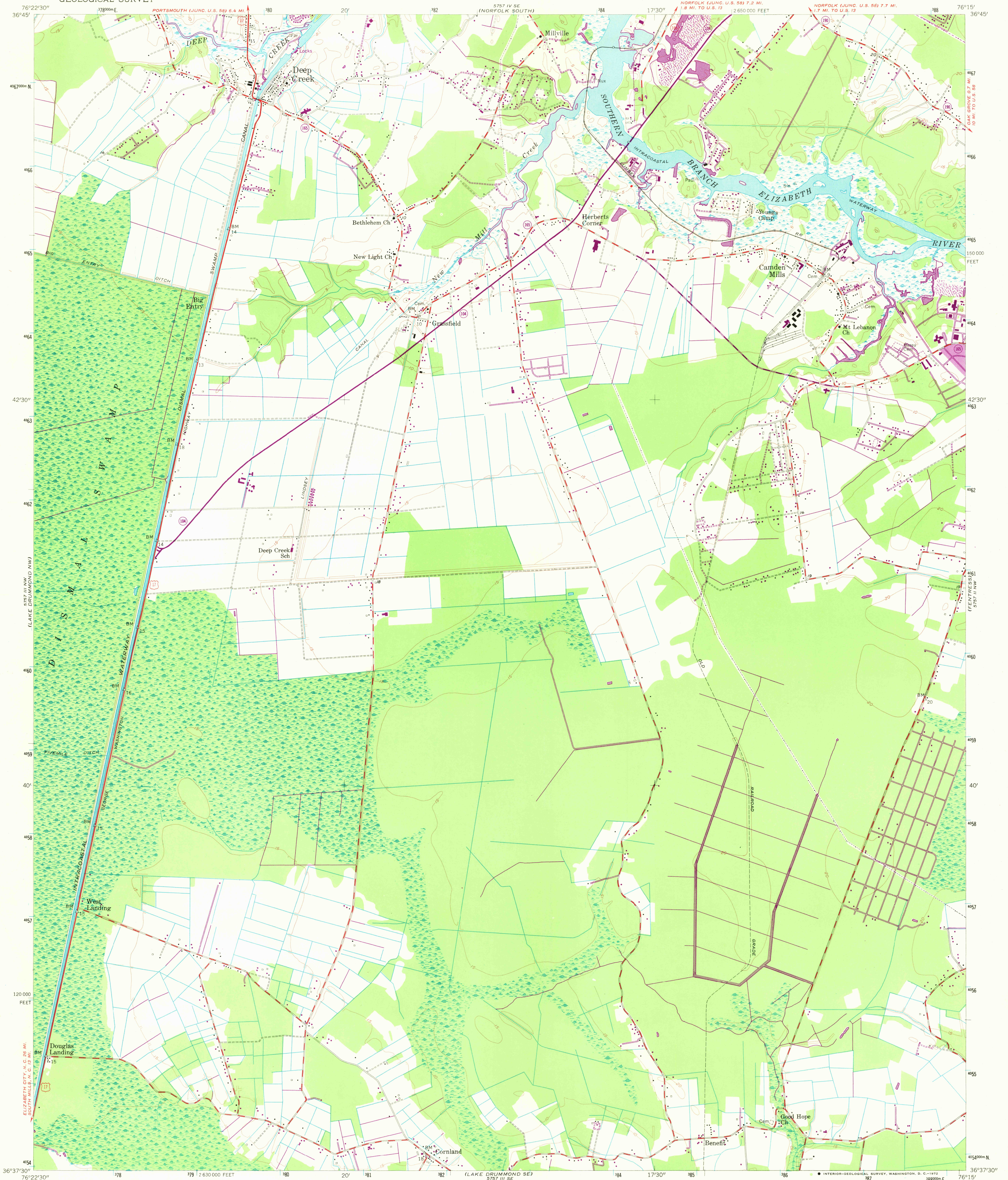
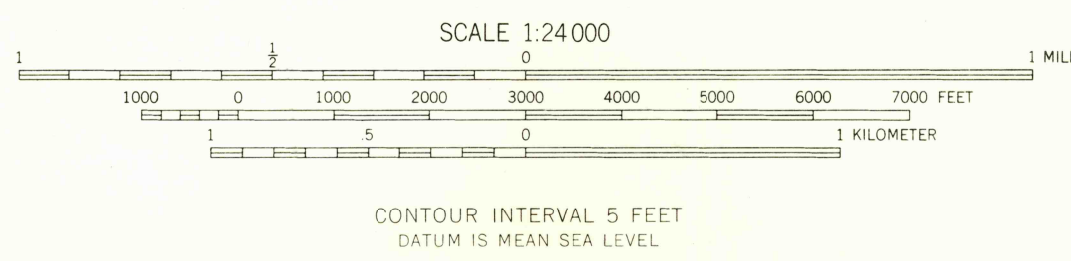
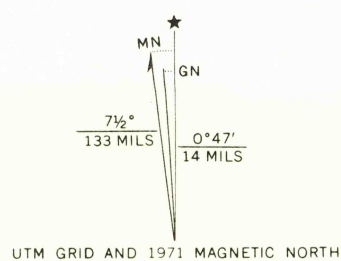


UNITED STATES
DEPARTMENT OF THE INTERIOR
GEOLOGICAL SURVEY

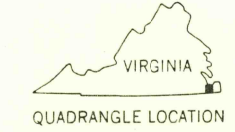
DEEP CREEK QUADRANGLE
VIRGINIA-CHESAPEAKE CITY
7.5 MINUTE SERIES (TOPOGRAPHIC)



Mapped, edited, and published by the Geological Survey
Control by USGS, USC&GS and USCE
Culture and drainage in part compiled from aerial photographs taken
1953. Topography enlarged from 1:62,500 scale map of
Lake Drummond quadrangle, 15 minute series
Original map by plane-table surveys 1940. Revised 1954
Polyconic projection. 1927 North American datum
10,000-foot grid based on Virginia coordinate system,
south zone
1000-meter Universal Transverse Mercator grid ticks,
zone 18, shown in blue
Revisions shown in purple compiled in cooperation with
Commonwealth of Virginia agencies from aerial photographs
taken 1971. This information not field checked
Purple tint indicates extension of urban areas



THIS MAP COMPLIES WITH NATIONAL MAP ACCURACY STANDARDS
FOR SALE BY U. S. GEOLOGICAL SURVEY, WASHINGTON, D. C. 20242
AND VIRGINIA DIVISION OF MINERAL RESOURCES, CHARLOTTESVILLE, VIRGINIA 22903
A FOLDER DESCRIBING TOPOGRAPHIC MAPS AND SYMBOLS IS AVAILABLE ON REQUEST



ROAD CLASSIFICATION	
Heavy-duty	Light-duty
Medium-duty	Unimproved dirt
U. S. Route	State Route

DEEP CREEK, VA.
N3637.5-W7615/7.5
1954
PHOTOREVISED 1971
AMS 5757 III NE-SERIES V834

2680