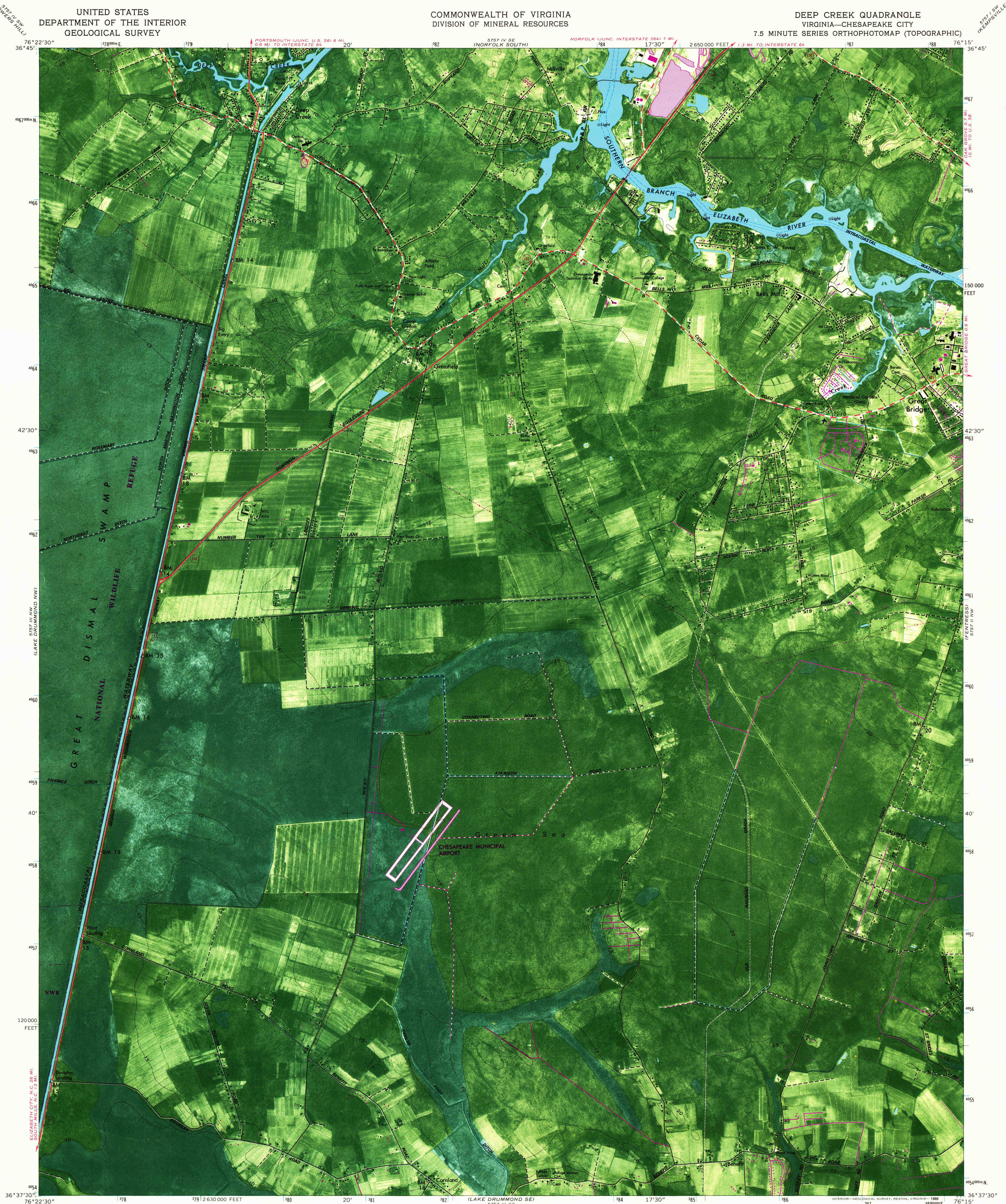


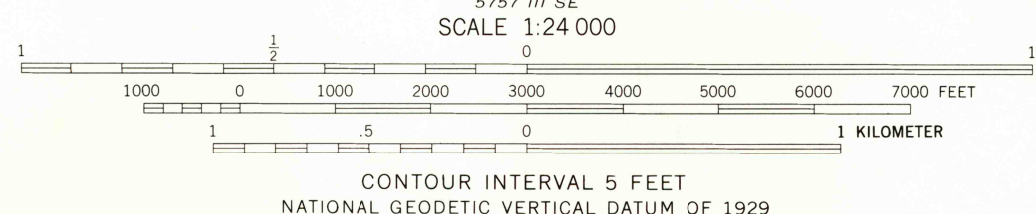
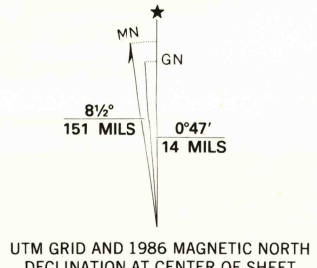
UNITED STATES
DEPARTMENT OF THE INTERIOR
GEOLOGICAL SURVEY

COMMONWEALTH OF VIRGINIA
DIVISION OF MINERAL RESOURCES

DEEP CREEK QUADRANGLE
VIRGINIA—CHESAPEAKE CITY
7.5 MINUTE SERIES ORTHOPHOTOMAP (TOPOGRAPHIC)



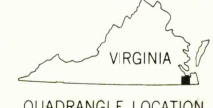
Mapped, edited, and published by the Geological Survey
Control by USGS, NOS/NOAA, and USCE
Orthophotomap prepared from aerial photograph taken March 24, 1973. Field checked 1974
Original map by planetable surveys 1940
Supersedes map dated 1954
Projection and 10,000-foot grid ticks: Virginia coordinate system, south zone
1000-meter Universal Transverse Mercator grid ticks, zone 18, shown in blue. 1927 North American datum
To place on the predicted North American Datum 1983, move the projection lines 11 meters south and 30 meters west as shown by dashed corner ticks



THIS MAP COMPLIES WITH NATIONAL MAP ACCURACY STANDARDS
FOR SALE BY U. S. GEOLOGICAL SURVEY
DENVER, COLORADO 80225, OR RESTON, VIRGINIA 22092
AND VIRGINIA DIVISION OF MINERAL RESOURCES, CHARLOTTESVILLE, VIRGINIA 22903
A FOLDER DESCRIBING TOPOGRAPHIC MAPS AND SYMBOLS IS AVAILABLE ON REQUEST

Revisions shown in purple compiled in cooperation with Commonwealth of Virginia agencies from aerial photographs taken 1982 and other source data. This information not field checked. Map edited 1986

ROAD CLASSIFICATION
Primary highway, hard surface — Light-duty road, hard or improved surface
Secondary highway, hard surface — Unimproved road
Trails —
Interstate Route — U. S. Route — State Route



DEEP CREEK, VA.
36076-F3-DM-024
1977
PHOTOREVISED 1986
DMA 5757 III NE—SERIES Y8840

