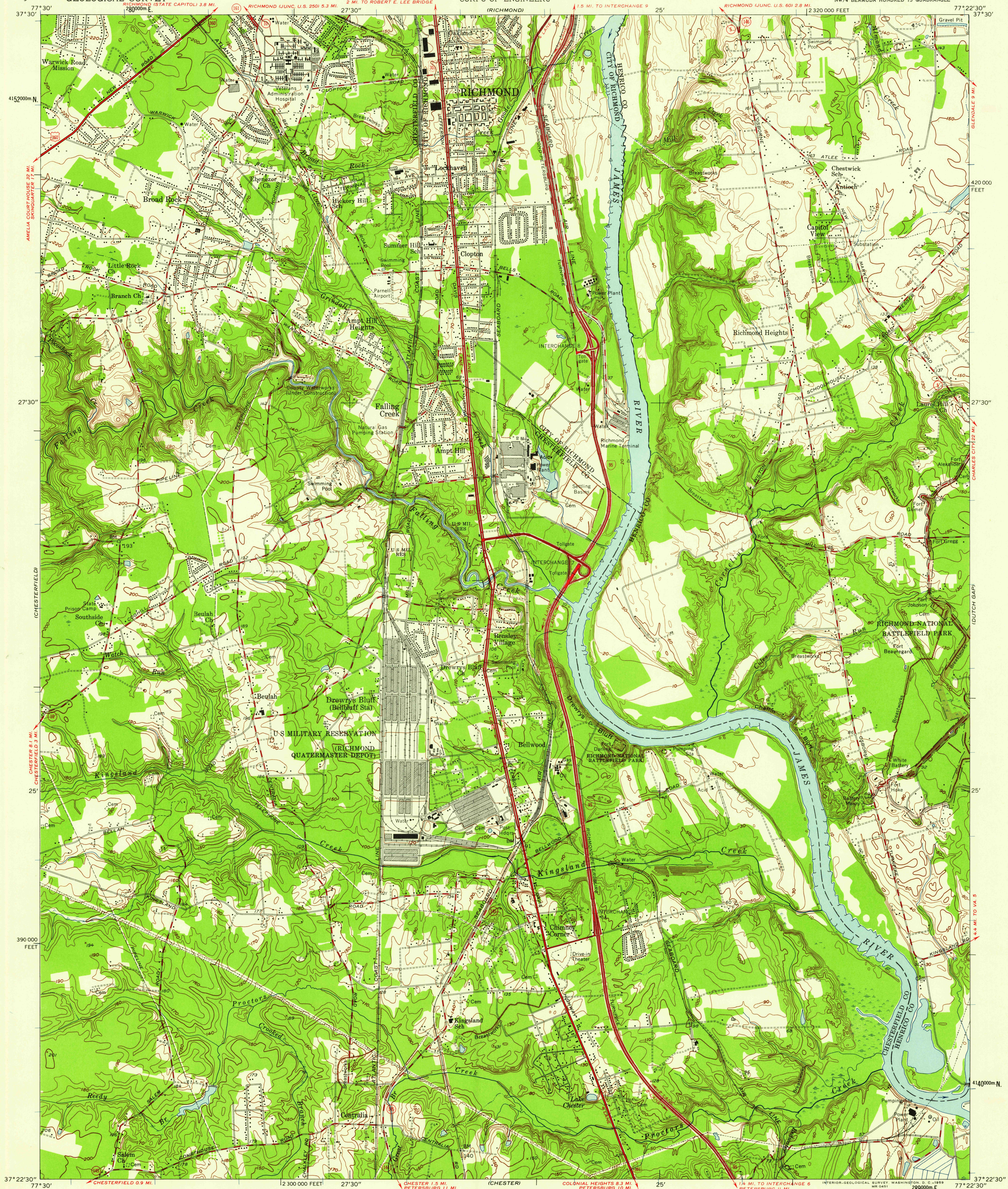


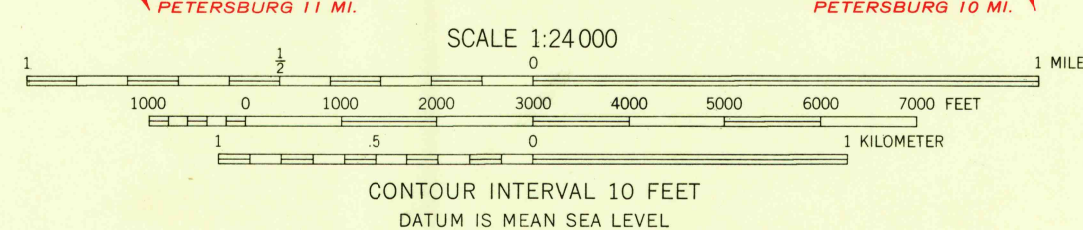
UNITED STATES
DEPARTMENT OF THE INTERIOR
GEOLOGICAL SURVEY

UNITED STATES
DEPARTMENT OF THE ARMY
CORPS OF ENGINEERS

DREWRY'S BLUFF QUADRANGLE
VIRGINIA
7.5 MINUTE SERIES (TOPOGRAPHIC)
NW 4 BERMUDA HUNDRED 15' QUADRANGLE

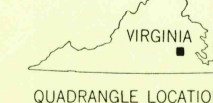


Maped by the Geological Survey
Revised by the Army Map Service
Published for civil use by the Geological Survey
Control by USGS and USC&GS
Topography by planetable surveys 1938. Revised by
photogrammetric methods from aerial photographs
taken 1952. Field check 1952
Polyconic projection. 1927 North American datum
10,000-foot grid based on Virginia coordinate system, south zone
1000-meter Universal Transverse Mercator grid ticks,
zone 18, shown in blue
Richmond-Petersburg Turnpike added 1958



USGS
Historical File
Topographic Division

ROAD CLASSIFICATION
Heavy-duty ——— Light-duty ———
Medium-duty ——— Unimproved dirt ———
Interstate Route U.S. Route State Route



USGS
FILE COPY
TOPOGRAPHIC DIVISION

DREWRY'S BLUFF, VA.
NW 4 BERMUDA HUNDRED 15' QUADRANGLE
N3722.5—W7722.5/7.5

1952

THIS MAP COMPLIES WITH NATIONAL MAP ACCURACY STANDARDS
FOR SALE BY U. S. GEOLOGICAL SURVEY, WASHINGTON 25, D. C.
A FOLDER DESCRIBING TOPOGRAPHIC MAPS AND SYMBOLS IS AVAILABLE ON REQUEST

OCT - 9 1959