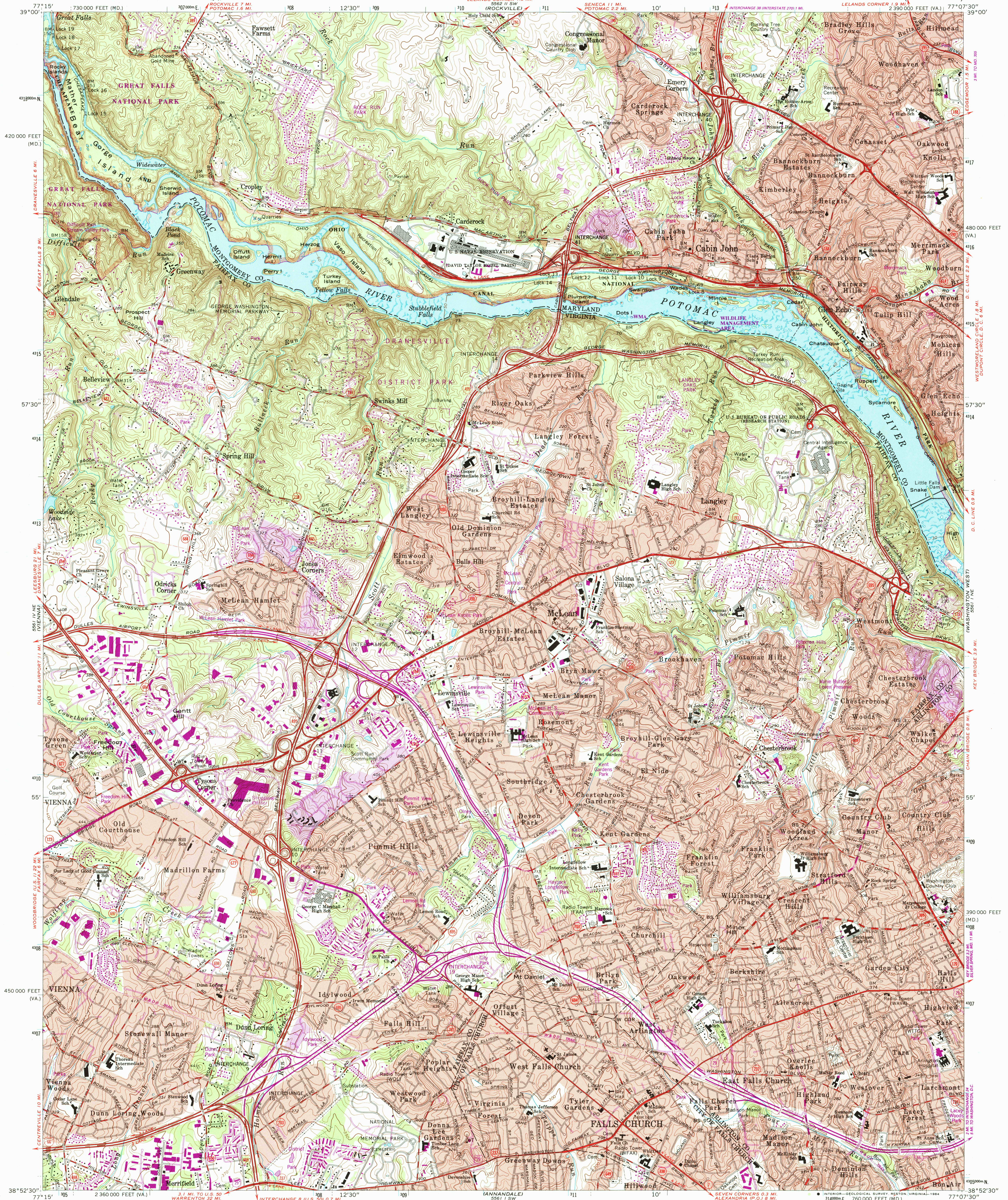


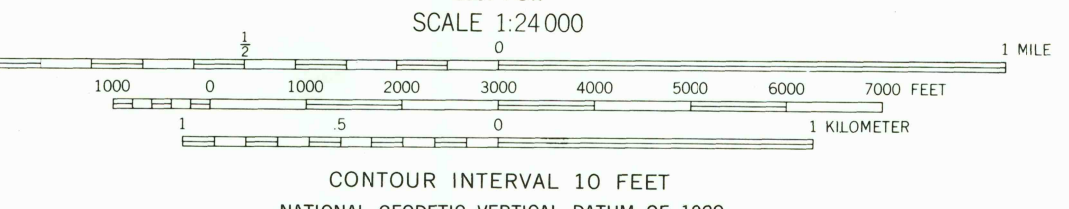
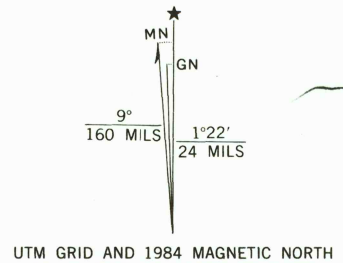
UNITED STATES  
DEPARTMENT OF THE INTERIOR  
GEOLOGICAL SURVEY



FALLS CHURCH QUADRANGLE  
VIRGINIA-MARYLAND  
7.5 MINUTE SERIES (TOPOGRAPHIC)  
LELANDS CORNER 1.9 MI.  
2 390 000 FEET (VA.)

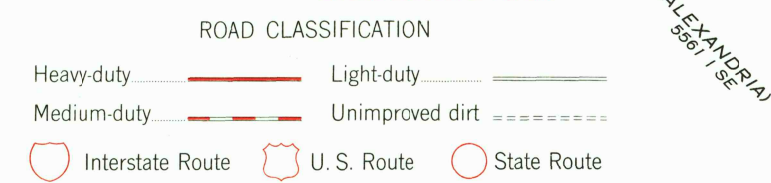


Mapped, edited, and published by the Geological Survey  
Control by USGS, NOS/NOAA, USCE, NCPS, and WSSC  
Topography by photogrammetric methods from aerial photographs  
taken 1955. Field checked 1956. Revised 1965  
Polyconic projection. 10,000-foot grid ticks based on Virginia  
coordinate system, north zone, and Maryland coordinate system  
1000-meter Universal Transverse Mercator grid ticks,  
1927 North American Datum  
To place on the predicted North American Datum 1983  
move the projection lines 8 meters south and  
26 meters west as shown by dashed corner ticks  
Fine red dashed lines indicate selected fence and field lines where  
generally visible on aerial photographs. This information is unchecked  
Red tint indicates areas in which only landmark buildings are shown  
There may be private inholdings within the boundaries of  
the National or State reservations shown on this map



THIS MAP COMPLIES WITH NATIONAL MAP ACCURACY STANDARDS  
FOR SALE BY U.S. GEOLOGICAL SURVEY, RESTON, VIRGINIA 22092  
AND VIRGINIA DIVISION OF MINERAL RESOURCES, CHARLOTTESVILLE, VIRGINIA 22903  
A FOLDER DESCRIBING TOPOGRAPHIC MAPS AND SYMBOLS IS AVAILABLE ON REQUEST

Revisions shown in purple and woodland compiled in cooperation  
with Commonwealth of Virginia agencies from aerial photographs  
taken 1981 and other sources. This information not field checked  
Map edited 1984  
Purple tint indicates extension of urban areas



FALLS CHURCH, VA. - MD.  
38077-H2-TF-024

1965  
PHOTOREVISED 1984  
DMA 5561 I NW - SERIES Y834