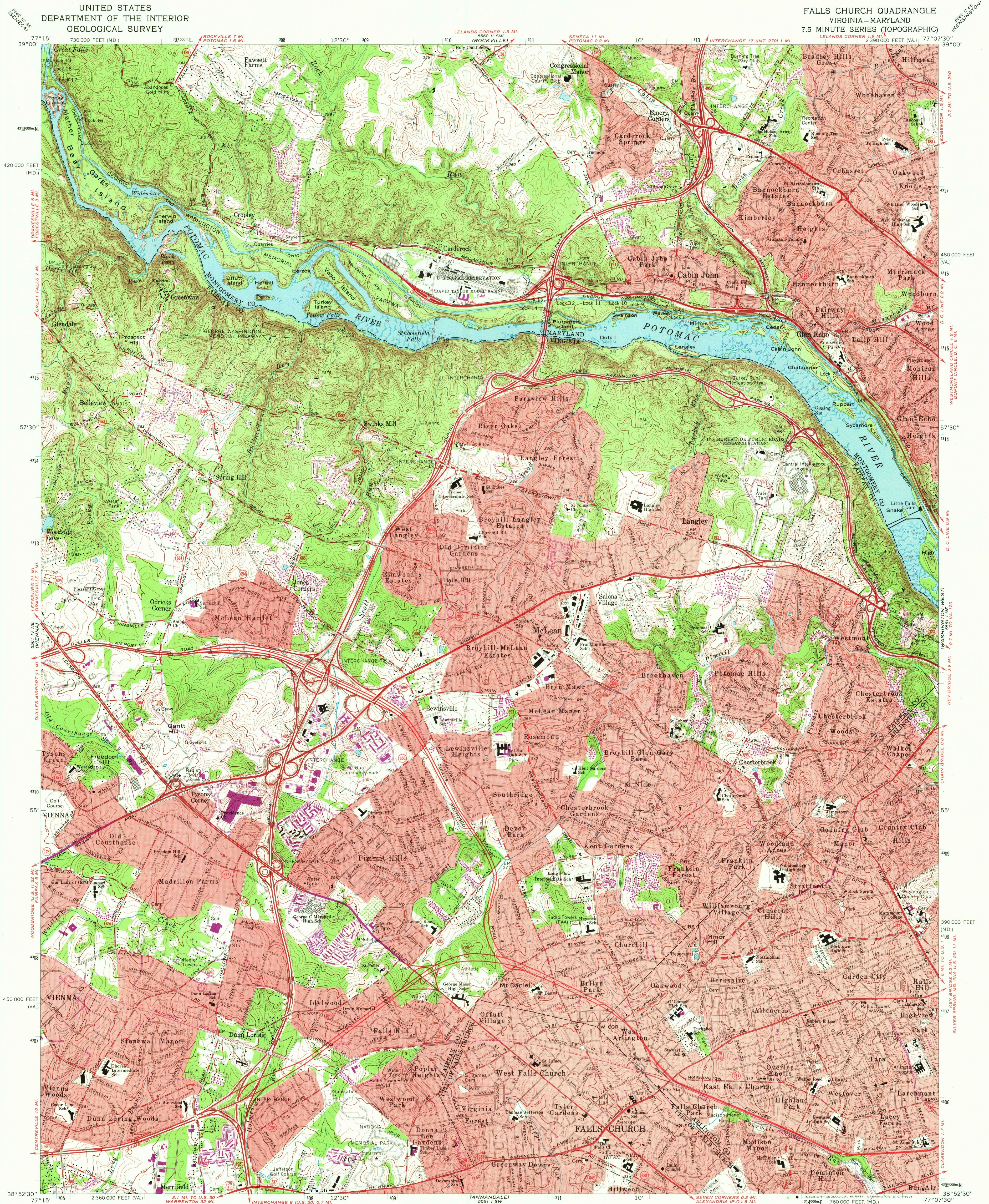


UNITED STATES  
DEPARTMENT OF THE INTERIOR  
GEOLOGICAL SURVEY

FALLS CHURCH QUADRANGLE  
VIRGINIA-MARYLAND  
7.5 MINUTE SERIES (TOPOGRAPHIC)



Mapped, edited, and published by the Geological Survey

Control by USGS, USC&GS, USCE, NCPS, and WSSC

Topography by photogrammetric methods from aerial photographs

taken 1955. Field checked 1956. Revised 1965

Polycyclic projection. 1927 North American datum

10,000-foot grids based on Virginia coordinate system,

north zone, and Maryland coordinate system

1000-meter Universal Transverse Mercator grid ticks,

zone 18, shown in blue

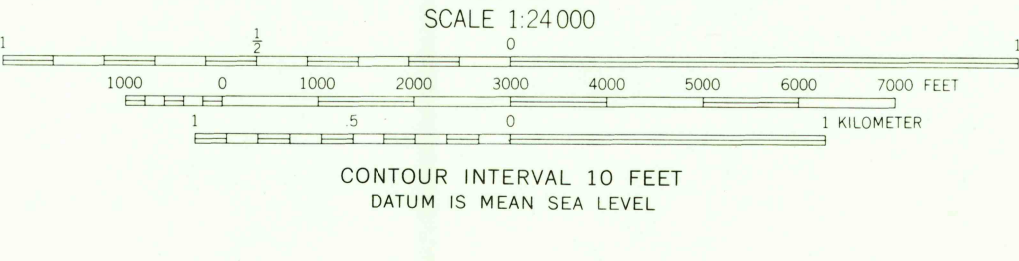
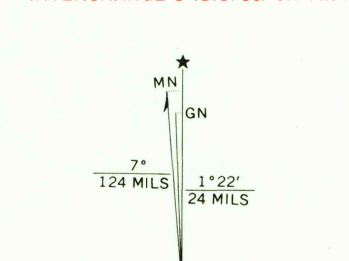
Fine red dashed lines indicate selected fence and field lines where

generally visible on aerial photographs. This information is uncheck

Red tint indicates areas in which only landmark buildings are shown

Revisions shown in purple compiled from aerial photographs

taken 1971. This information not field checked



ROAD CLASSIFICATION  
Heavy-duty ——— Light-duty ———  
Medium-duty ——— Unimproved dirt ———  
Interstate Route U.S. Route State Route

FALLS CHURCH, VA.-MD.  
N3852.5-W7707.5

1965  
PHOTOREVISED 1971  
AMS 5561 1 NW-SERIES V834

OCT 1 1971

USGS  
HISTORICAL FILE  
TOPOGRAPHIC DIVISION