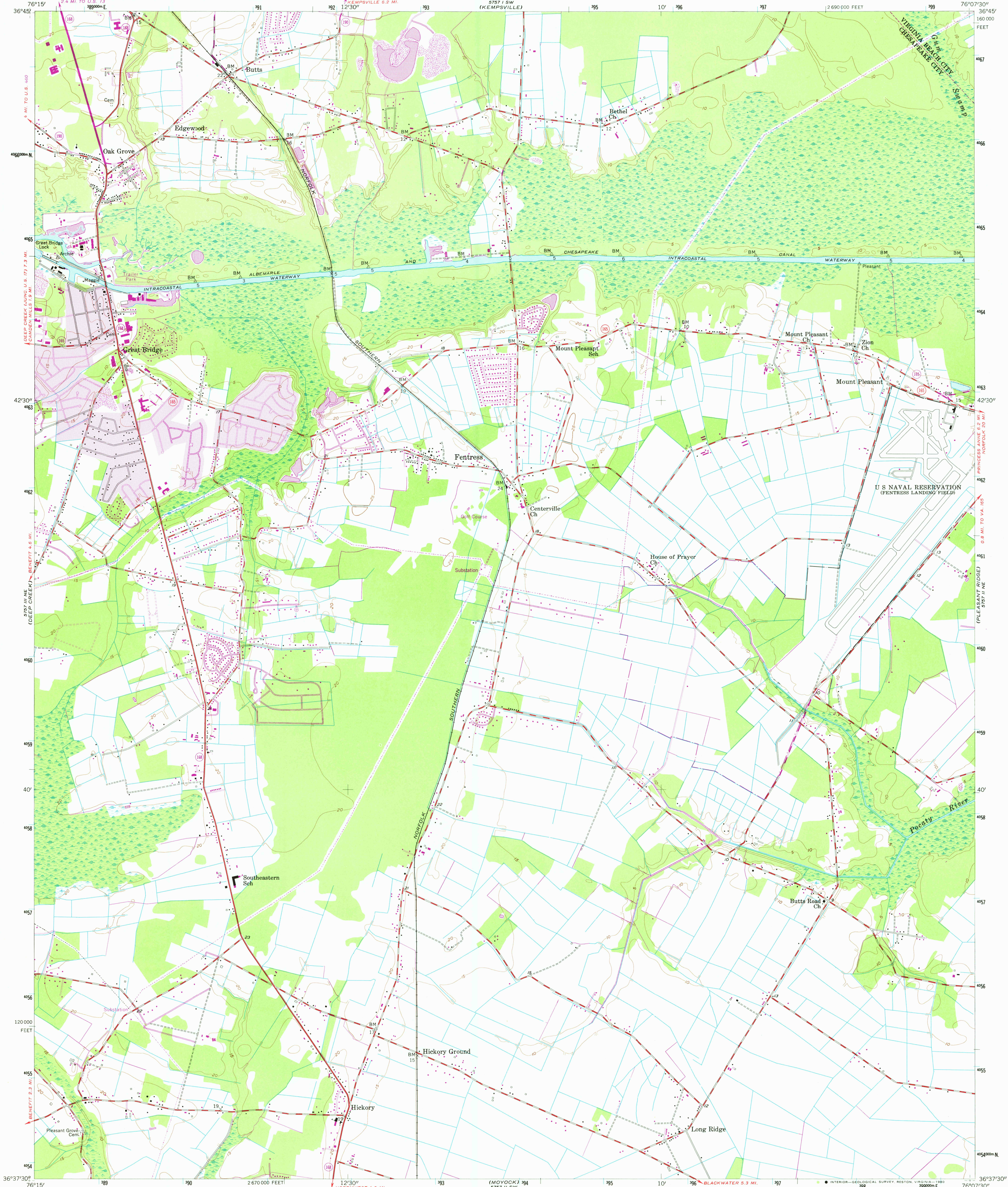


UNITED STATES
DEPARTMENT OF THE INTERIOR
GEOLOGICAL SURVEY



FENTRESS QUADRANGLE
VIRGINIA
7.5 MINUTE SERIES (TOPOGRAPHIC)



Mapped, edited, and published by the Geological Survey

Control by USGS, USC&GS, and USCE

Culture and drainage in part compiled from aerial photographs taken 1953. Topography enlarged from 1:62 500 scale map of Moyock quadrangle, 15 minute series. Original map by planetable surveys 1938-1939. Revised 1954

Polyconic projection. 1927 North American datum

10,000-foot grid based on Virginia coordinate system, south zone

1000-meter Universal Transverse Mercator grid ticks, zone 18, shown in blue

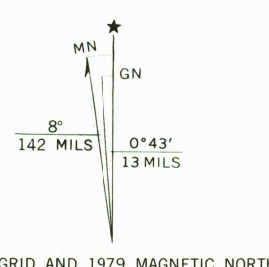
To place on the predicted North American Datum 1983

move the projection lines 11 meters south and

30 meters west as shown by dashed corner ticks

There may be private inholdings within the boundaries of

the National or State reservations shown on this map



CONTOUR INTERVAL 5 FEET
NATIONAL GEODETIC VERTICAL DATUM OF 1929

THIS MAP COMPLIES WITH NATIONAL MAP ACCURACY STANDARDS
FOR SALE BY U.S. GEOLOGICAL SURVEY, RESTON, VIRGINIA 22092
AND VIRGINIA DIVISION OF MINERAL RESOURCES, CHARLOTTESVILLE, VIRGINIA 22903
A FOLDER DESCRIBING TOPOGRAPHIC MAPS AND SYMBOLS IS AVAILABLE ON REQUEST



QUADRANGLE LOCATION

Revisions shown in purple compiled in cooperation with State of Virginia agencies from aerial photographs taken 1977 and other source data. This information not field checked. Map edited 1979
Boundary lines shown in purple compiled from latest information available from the controlling authority
Purple tint indicates extension of urban areas

ROAD CLASSIFICATION			
Heavy-duty	Medium-duty	Light-duty	Unimproved dirt
U.S. Route	State Route		

USCS
Historical File
Topographic Division

FENTRESS, VA.

N 3637.5—W 7607.5/7.5

1954

PHOTOREVISED 1979

DMA 5757 II NW—SERIES V834

MAY - 9 1980

2050